

BOSMAN®

seria profesjonalna
dla każdego

silikony | piany | impregnaty | kleje



Instytut Techniki Budowlanej



PRODUCT CATALOGUE

FRIENDLY BUILDING BRANDS



www.odadoz.pl

BOSMAN[®]

professional series
for everybody

silicones | foams | impregnants | adhesives

STAND

METAL STAND

METAL STAND





WOODEN STAND



PRODUCT CATALOGUE

TABLE OF CONTENTS

- STAND	page 2-3
- TABLE OF CONTENTS	page 4-5
- ABOUT THE COMPANY	page 6
- EXPLANATIONS	page 7
DISINFECTION	
- HAND AND SURFACE DISINFECTION FLUID	page 8
- FLUID FOR DISINFECTION, WASHING AND CLEANING SURFACE	
SILICONES / SEALANTS	
- ALL-PURPOSE SILICONE	page 9-11
- ALL-PURPOSE SILICONE in a film package 600 ml	
- SANITARY SILICONE	
- SANITARY SILICONE in a film package 600 ml	
- GLAZIER'S SILICONE	page 12
- GLAZIER'S SILICONE in a film package 600 ml	
- NEUTRAL BUILDING SILICONE	
- NEUTRAL BUILDING SILICONE in a film package 600 ml	
- HIGH-TEMPERATURE SILICONE	page 13
- ALL-PURPOSE SILICONE, ECONOMIC SERIES FOR EVERYBODY	
- SANITARY SILICONE, ECONOMIC SERIES FOR EVERYBODY	
- FIREPLACE SEALANT	
ACRYL	
- INDOOR ACRYL, ECONOMIC SERIES FOR EVERYBODY	page 14
- INDOOR ACRYL	
- INDOOR ACRYL in a film package 600 ml	
- OUTDOOR ACRYL	page 15
- ACRYL FOR PLASTERBOARDS	
- ACRYL PUTTY	
- ACRYL FOR PLASTER WORK	
ACRYL	
- EXTREME GLUE GLUE + HYBRID SEALANT BULL	page 16
- GORILLA ASSEMBLY ADHESIVE	
CHEMICAL ANCHOR / INSTALLATION ADHESIVES / MS POLYMERS	
- CHEMICAL ANCHOR	page 17
- NEOPRENE ASSEMBLY ADHESIVE	
- MULTI-PURPOSE ASSEMBLY SBS ADHESIVE	page 18
- AQUA ACRYLIC ASSEMBLY ADHESIVE	
- SILICONE ADHESIVE FOR MIRRORS	
ROOFING SEALANTS / ROOFING TAPES	
- 50 QB POLYURETHANE SEALANT	page 18
- XXX-100 SEALING POLYMER ADHESIVE WHITE, NEW TECHNOLOGY	page 19
- XXX-100 SEALING POLYMER ADHESIVE CRYSTAL, NEW TECHNOLOGY	
- ROOFWORK SEALANT, ROOFWORK COMPOUND	page 20
- RUBBER ROOFWORK SEALANT	
- ALUMINIUM/COPPER/GREY ROOFWORK TAPE	
EQUIPMENT	
- SKELETON GUN FOR CARTRIDGES, STANDARD	page 21
- GUN FOR SILICONE in film packages 600 ml	
- PROFESSIONAL DISPENSER FOR SILICONE COMPOUNDS AND ACRYL	
GAS CARTRIDGES	
- ALL-PURPOSE SILICONE, GAS CARTRIDGE	page 22
- SANITARY SILICONE, GAS CARTRIDGE	
- HIGH-TEMPERATURE SILICONE, GAS CARTRIDGE	
PU ASSEMBLY FOAMS	
- 'BOSMAN' TUBE FOAM, SUMMER	page 23-25
- 'BOSMAN' TUBE FOAM, WINTER	
- 'BOSMAN' GUN FOAM, SUMMER, LOW-PRESSURE	
- 'BOSMAN' GUN FOAM, WINTER, LOW-PRESSURE	
- 'BOSMAN LUX 65L' GUN FOAM, EXTREMELY EFFICIENT, SUMMER	page 26
- 'BOSMAN LUX 65L' GUN FOAM, EXTREMELY EFFICIENT, LOW-PRESSURE WINTER	
- 'GOLD' GUN FOAM, SUPER-LOW PRESSURE, GOLD COLOUR, ALL SEASON	
- 'BOSMAN SILVER' GUN FOAM QUICK-BONDING, ALL SEASON	page 27
- 'BOSMAN LUX 80L' GUN FOAM, HYPER EFFICIENT, SUMMER, LOW-PRESSURE	
- 'BOSMAN LUX 2-in-1 GUN/TUBE FOAM, USE IN ANY WAY YOU LIKE	
- 'BOSMAN B1' GUN FOAM, FIREPROOF	
- BOSMAN TWO-COMPONENT FOAM (FOR CONSTRUCTION)	page 27
- FORMULA 1 TUBE FOAM, SUMMER	page 28
- FORMULA 1 TUBE FOAM, WINTER	
- FORMULA 1 GUN FOAM, SUMMER	
- FORMULA 1 GUN FOAM, WINTER	page 29
- 'OD A DO Z IZOFLEX' TUBE FOAM, SUMMER	
- 'OD A DO Z IZOFLEX' TUBE FOAM, WINTER	
- 'OD A DO Z' IZOFLEX GUN FOAM, SUMMER	
- 'OD A DO Z IZOFLEX' GUN FOAM	page 30
BUILDING ADHESIVES	
- 'BOSMAN' ADHESIVE FOR EPS	page 30-31
- 'BOSMAN' GLUE FOR STYROFOAMFOAM ADHESIVE, GUN	
- 'BOSMAN' GLUE FOR STYROFOAMFOAM ADHESIVE, TUBE	
- 'OD A DO Z IZOFLEX' GLUE FOR STYROFOAMFOAM ADHESIVE	page 32
- BOSMAN ADHESIVE FOR THERMAL INSULATION MINERAL WOOL	
- BOSMAN ROOFING GLUE THERMAL MODERNIZATION roof insulation	
- BOSMAN ROOFING GLUE THERMAL MODERNIZATION roof insulation	
- BOSMAN GLUE MORTAR	
- BOSMAN ADHESIVE FOR GYPSUM BOARDS AND OSB	page 33
- 'EASY' CONSTRUCTION ADHESIVE	
- BOSMAN PRIMER-CONTACT GLUE spray	
- BOSMAN LUX 70 LOW PRESSURE	
FOAM REMOVER AND CLEANERS / PRESERVING AND CLEANING AGENTS / FOAM GUNS	
- 'BOSMAN' ALL-PURPOSE CLEANER	page 34
- 'BOSMAN' FOAM GLUE REMOVER	
- 'BOSMAN' CURED FOAM REMOVER	
- BOSSMAN CITRUS CLEANER	page 35
- SILICONE OIL	
- PENETRATOR X-100 PENETRATING AGENT	
- INDUSTRIAL CLEANER DEGREASE	
- 'BOSMAN' PROFESSIONAL FOAM GUN	page 36
- STANDARD FOAM GUN	
CONSTRUCTION AND COLOURING IMPREGNANTS	
- 'BOSMAN' IMPREGNANT FOR BUILDING AND STRUCTURAL TIMBER, 1:6 1:9 CONCENTRATE /protection class I & II/	page 36-37
- 'BOSMAN' IMPREGNANT FOR BUILDING AND STRUCTURAL TIMBER, READY TO USE /protection class I & II/	
- 'IMPREGNACJA OD A DO Z' IMPREGNANT FOR STRUCTURAL TIMBER, READY TO USE /protection class I, II & III/	
- 'OD A DO Z' IMPREGNANT FOR BUILDING AND STRUCTURAL TIMBER, 1:19 CONCENTRATE /protection class I, II & III/	
- 4-PURPOSE FIRESTOP IMPREGANT FOR TIMBER	page 38
- 'OD A DO Z FLEX' SOLVENT-BASED COLOURING IMPREGNANT FOR TIMBER	
- 'OD A DO Z FLEX' SOLVENT-BASED COLOURING VARNISH FOR WOOD	page 39
- 'OD A DO Z FLEX' AZURE ACRYL FOR WOOD DECORATION	
- 'OD A DO Z FLEX' ACRYLIC VARNISH FOR WOOD COLOURING	
- WOOD STAIN VARNISHING PASTE, 1:1000 CONCENTRATE	
PRIMERS	
- 'BOSMAN' ACRYLIC PRIMER 1:1	page 40
- 'BOSMAN' ACRYLIC PRIMER, 1:9 CONCENTRATE	
- ACRYLIC PRIMER, PRIMING EMULSION, READY TO USE	page 41
- ANTIFUNGAL 2-in-1 ACRYLIC PRIMER	
- 'BOSMAN' ACRYLIC PRIMER FOR PLASTERBOARDS	
- QUARTZ PRIMER FOR TILE-TO-TILE NO-CHISEL BONDING	
- ALL-PURPOSE SUPER-BONDING PRIMER, READY TO USE, FOR HARD AND SMOOTH SURFACES	page 42
- 'BOSMAN ACRYLIC PRIMER non-dripping	
FINISHING COATS	
- PRIMING COAT FOR USE UNDER 'BOSMAN EXTRA GRUNT PUTZ' PLASTERS	page 43
- 'BOSMAN EXTRA PUTZ' FILLING AND REPAIR COMPOUND	
- 'BOSMAN' FINISHING PUTTY	
- 'GOLD BOSMAN EXTRA PUTZ' POLYMER AND GEL FINISHING COAT	
PAINTS	
- 'BOSMAN DE LUX' ACRYLIC PAINT	page 43
- 'BOSMAN STANDARD' EMULSION PAINT	page 44
- 'REZYDENCJA' FACADE PAINT	
- SILICONE SILVER COATING	
- 'BOSMAN PROFESSIONAL' SPRAY PAINT	



PRODUCT CATALOGUE

- 'BOSMAN' PRIMER PAINT, GREY page 45
- 'BOSMAN PROFESSIONAL' FIREPROOF ENAMEL
- 'BOSMAN PROFESSIONAL' FLUOMARKER SPRAY

CONCRETE ADDITIVES / PLASTIFIERS

- 'SUPER TYNKPLAST' (LIME REPLACEMENT) page 46-47
- 'SUPER TYNKPLAST' WINTER - ADDITIVE FOR BRICKLAYING IN WINTER (LIME REPLACEMENT)
- BONDING ACCELERATOR AND PLASTIFIER FOR CONCRETE MIXES
- 'ZIMOPLAST' - FOR PREPARING CONCRETE AT LOW TEMPERATURES

- HYDROPLAST (WATER SEALANT) page 48

- FROSTPROOF LIQUID FOR MIXING WITH ADHESIVES (FOR EPS, MESH SINKING, AND TILES)
- SUPERPLASTICIZER FOR FLOOR HEATING SYSTEMS
- LIME REPLACEMENT ADDITIVE SACHET, SUMMER

- LIME REPLACEMENT ADDITIVE SACHET, WINTER page 49

- 'BOSMAN' SODIUM WATER GLASS (WATER SEALANT)

SOLVENTS

- ALL-PURPOSE SOLVENT / metal page 50-51
- NITRO SOLVENT / metal
- CHLORINATED RUBBER SOLVENT / metal
- CARBAMIDE SOLVENT / metal

- PHTHALIC SOLVENT / metal page 52

- ACETONE-BASED SOLVENT / metal
- EXTRACTION SOLVENT / metal
- PURE PETROLEUM ETHER / metal

- ALL-PURPOSE SOLVENT page 53

- NITRO SOLVENT
- CHLORINATED RUBBER SOLVENT
- CARBAMIDE SOLVENT

- PHTHALATE SOLVENT page 54

- PAINT AND LACQUER SOLVENT
- MODIFIED PETROLEUM ETHER-BASED SOLVENT
- ACETONE-BASED SOLVENT

- DENATURATED ALCOHOL-BASED SOLVENT page 55

- NAPHTHA-BASED SOLVENT
- TOLUENE-BASED SOLVENT
- XYLENE-BASED SOLVENT

- NITRO RC01 SOLVENT page 56

- PURE PETROLEUM ETHER

AQUEOUS AND SOLVENT ADHESIVES

- 'WICOL BOSMAN' ADHESIVE page 56

- ADHESIVE FOR WOOD AND D3 CLASS FLOOR PANELS page 57

- 'BOSMAN' ADHESIVE FOR EPS AND CORK

- 'OSAKRYL BOSMAN' ADHESIVE

- 'BOSMAN' ALL-PURPOSE POLYMER ADHESIVE

- 'BOSMAN BUTAPREN A' ADHESIVE page 58

- 'BOSMAN' SHOEMAKER'S ADHESIVE

BITUMINOUS COMPOUNDS / ANTI-MOISTURE INSULATIONS

- 'MEGA BITUM' DYSERBIT ASPHALT AND RUBBER COMPOUND FOR INSULATING, WINTER page 58-59

- 'MEGA BITUM' DYSERBIT ASPHALT AND RUBBER COMPOUND FOR INSULATING, WINTER

- 'MEGA BITUM' SOLVENT PRIMER

- 'MEGA BITUM' BINDER FOR COLD APPLICATION page 60

- 'MEGA BITUM' COATING COMPOUND

- 'MEGA BITUM' STYRBIT BITUMEN AND RUBBER ADHESIVE

- 'MEGA BITUM' ROOFWORK PUTTY

- 'MEGA BITUM 2K' TWO-COMPONENT MORTAR FOR WATERPROOFING OF BALCONIES AND TERRACES

- 'MEGA BITUM AQUA STOP' FOR USE IN EXTREME CONDITIONS page 61

FOLIE BUDOWLANE IZOLACYJNE / OCHRONNE

- WATER VAPOUR INSULATION FILM FOR BUILDINGS page 61

- INSULATION FILM FOR BUILDINGS

- HORIZONTAL INSULATION FOR FOUNDATIONS page 62

- CELLULAR AIR-PLASTIC FILM - VERTICAL INSULATION OF FOUNDATIONS

- PROTECTIVE FILMS FOR BUILDINGS PROTECTIVE, SLIP-RESISTANT

- XXL SHEET page 63

- PAINTER'S FILM - THIN, THICK, EXTRA THICK

- BOSMAN PRIMER-CONTACT GLUE spray

LIQUID FILMS

- 'OD A DO Z FLEX' LIQUID FILM FOR OUTDOOR USE page 64

- 'OD A DO Z FLEX' LIQUID FILM FOR INDOOR USE

- 'BOSMAN' LIQUID FILM

ROOF MEMBRANE

- VAPOR-PROOF ROOF MEMBRANE page 65

MILDEWCIDAL AND FUNGICIDAL AGENTS / THERMAL INSULATION MESH

- 'BOSMAN' MILDEWCIDAL AGENT page 65

- 'FUNGI-KILL' FUNGICIDAL AND MILDEWCIDAL PREPARATION

- 'BOSMAN' SUPER CLEANER page 66

- BOSMAN PRIMER-CONTACT GLUE spray

THERMAL INSULATION MESH

- THERMAL INSULATION MESH, 5x5x145, 5x5x150, 5x5x160 page 66

TAPES AND ACCESSORIES

- 'BOSMAN' PAINTER'S MASKING TAPE, BLUE page 67

- 'BOSMAN' PAINTER'S MASKING TAPE, YELLOW

- 'BOSMAN' PAINTER'S MASKING TAPE, GOLD

- 'BOSMAN' BUILDING TAPE FOR PLASTERWORK page 68

- 'BOSMAN' BUILDING TAPE FOR REPAIRS

- ROOFWORK TAPE, ALUMINIUM / GREY / COPPER

- PP-25115 TWO-SIDED TAPE

- PP-22107 REINFORCED TWO-SIDED TAPE page 69

- TWO-SIDED ASSEMBLY FOAM TAPE

WATERPROOFING TAPES

- SEALING TAPE ON A FIBER page 69

- 'OD A DO Z FLEX' WATERPROOFING TAPE

- BUTYL TAPE B1 page 70

WARM INSTALLATION TAPE

- 'INSIDE' ASYMMETRICAL INNER TAPE page 70-71

- 'OUTSIDE' ASYMMETRICAL OUTER TAPE

OTHER

- PROFESSIONAL DISPENSER FOR SILICONE COMPOUNDS AND ACRYL page 71

- 'INCHEM MIX' PIGMENT page 72

- PAINTER'S SOAP

- "LÓD STOP" SNOW AND ICE REMOVER

- SOOT REMOVER

- CAUSTIC SODA page 73

- 'BOSMAN FOSKOR' RUST REMOVER

- WINDSCREEN WIPER FLUID

- TARPAULIN COVERINGS

- PAINT REMOVING AGENT, FOR REMOVAL OF PAINT AND OLD LACQUER COATINGS page 74

- GARBAGE AND RUBBISH BAGS

- STOVE MORTAR

BRUSHES / TOOLS

- FLAT PAINT BRUSH page 74

- ROUND PAINT BRUSH

- THIN FLAT PAINT BRUSH

- MINI "BENCH PAINTER" PAINT BRUSH

- RADIATOR PAINT BRUSH

- WOODEN "BENCH PAINTER" PAINT BRUSH page 76

- TAR BRUSH

STANDS

- XXX 100 EXPOSITION DISPLAY, POLYMER, WHITE page 77

- XXX 100 EXPOSITION DISPLAY, POLYMER, TRANSPARENT

KITS

- 'BOSMAN' FITTER'S STARTING KIT page 77

- KIT 1

- KIT 2 page 78

- KIT 3

- KIT 4 page 79

- KIT 5

- KIT 6 page 80

WORKING CLOTHES / NOTES

- 'BOSMAN' WORKING TROUSERS AND JUMPER page 81

- 'BOSMAN' WORKING POLAR JUMPER

- 'BOSMAN' POLO SHIRT

- BOSMAN TOWEL

- NOTES page 82-83

OD A DO Z S.A.

Od A do Z S.A. is a company that has been active in the field of building chemistry production and distribution for over 20 years. The main seat of our company is located in Łódź at the address ul. Helska 47/61, while in Pszczółki next to Gdańsk we have our trading office. We have office, commercial, and production facilities with total surface area of over 8 thousand square metres. Our company manufactures about a dozen assortment groups, including, among others: foams, silicones, acrylics, acrylic sealing compounds, rubbers, adhesives, and many other products. Our assortment includes over 500 articles. We own about a dozen trade brands that are recognisable both in Poland and the whole Europe. Our company manufactures many articles under its private label brand that many customers recognise. Our products stand out thanks to their innovativeness and quality and have all the documents required that allowed them to be accepted for trading. Domestically, we collaborate with wholesale stores, building supply warehouses, supermarkets, and manufacturers. In Poland, we have several dozen trade representatives that are ready to provide you with assistance. We are also active in other European countries, such as: Germany, UK, Estonia, Ukraine, and many more. We participate actively in many trade fairs, both within Poland and around the world. We have large manufacturing and logistics capabilities at our disposal, as well as a large car fleet consisting of over 60 vehicles. The above mentioned advantages help us meet your expectations.



OUR OFFER INCLUDES MANY ASSORTMENT ARTICLES, such as:

- SILICONES
- ACRYLS
- CHEMICAL ANCHORS
- ASSEMBLY ADHESIVES
- PU ADHESIVES
- MS POLYMERS
- ROOFWORK SEALANTS
- PU FOAMS
- FOAM REMOVERS, CLEANERS
- PRIMERS, FINISHING COATS,
- SPRAY PAINTS
- PLASTICIZERS
- WATERPROOFING
- LIQUID FILMS
OUTDOOR AND INDOOR
- ADHESIVES FOR WOOD
- PUTTIES, JOINTS, FILLERS
- WOOD IMPREGNANTS
- SOLVENTS
- ROOFWORK TAPES
- BUILDING FILMS
- TOOLS
- THERMAL INSULATION MESH

Thanks to their quality and versatile use, our products are frequently used in building construction, glass-making, manufacturing, and households. We provide our clients with high-quality professional service, advice, and consulting. Every day, at any place in our country, you can contact our trade representatives directly. They will present our offer, provide advice, and help solve any problem.

The trust of our Investors is the best confirmation of quality of our services. Our business competences have already been recognised for multiple times, resulting in us having received many prestigious awards and distinctions.



EXPLANATION OF SYMBOLS USED IN THE CATALOGUE



outdoor and indoor application



for porous/absorbent surfaces



protects against fungi



can be polished after it has cured



shelf life



for indoor use



application temperature from ... to ...°C



protects against insects



retains wood structure



gel consistency



for outdoor use



thermal resistance (after curing) from ... to ...°C



works against fungi and insects



decorative effect



concentrate



suitable for use in any season



resistant to UV radiation



permanent colour



non-corrosive



water-based product



suitable for use in winter



resistant to humidity



permanent colour and semi-matt effect



deep penetration



solvent-based product



for smooth/nonabsorbent surfaces



resistant to rain



immune to washing out



quick drying



CE conformity mark



for smooth and porous surfaces



protects against fire



can be painted after it has cured



very quick effect



product admitted for trading and common use



additional information



comparative juxtaposition



new



our special recommendation



prevents penetration by water

BOSMAN[®]professional series
for everybody

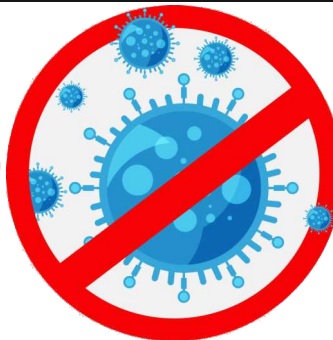
silicones | foams | impregnants | adhesives



DISINFECTION

- **HAND AND SURFACE DISINFECTION FLUID**
- **FLUID FOR DISINFECTION, WASHING AND CLEANING SURFACE**

**Office for registration
Of medicinal products,
Medical devices
And biocidal products**

**GERMICIDAL****FUNGICIDAL****VIRUSIDAL
(including
CORONAVIRUS
SARS-COV-2)****permit no 2789/TP/2020**

SAFETY IS IMPORTANT

HAND AND SURFACE DISINFECTION FLUID

A-ALKOHOLOWY PŁYN

**INTENDED USE**

A liquid product for hygienic and surgical hand disinfection and for disinfecting surfaces both in and out of contact with food, with bactericidal, fungicidal and virucidal properties against enveloped viruses (including the SARS-COV-2 coronavirus).

LOGISTIC INFORMATION

COLOUR	CAPACITY	PACKAGING TYPE	COLLECTIVE PACKAGING	QUANTITY ON A PALLET
<input type="checkbox"/> colourless	0,5 L	bottle	12 pcs	1200 pcs
	1 L	bottle	6 pcs	540 pcs
	5 L	canister	1 pcs	108 pcs

FLUID FOR DISINFECTION, WASHING AND CLEANING SURFACE

**INTENDED USE**

A liquid product for hygienic and surgical hand disinfection and for disinfecting surfaces both in and out of contact with food, with bactericidal, fungicidal and virucidal properties against enveloped viruses (including the SARS-COV-2 coronavirus).

LOGISTIC INFORMATION

COLOUR	CAPACITY	PACKAGING TYPE	COLLECTIVE PACKAGING	QUANTITY ON A PALLET
<input type="checkbox"/> colourless	400 ml	can	12 pcs	1008 pcs





BUILDING AND REPAIRING IS EASIER WITH OUR PRODUCTS



SILICONS/ACRYLS SEALANTS/ADHESIVES

HOW TO USE THE CARTRIDGE

i

1



Cut the cartridge tip off above the thread.

2



Remove the nut from the dispenser.

3



Screw the dispenser onto the cartridge.

4

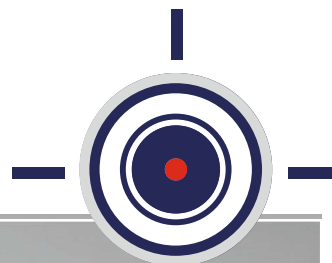


Make a joint-wide incision on the dispenser at the angle of 45°.

5



Place the cartridge in the extruder.



CE



NEW TECHNOLOGY



SHINY AND CLEAN JOINT, FREE OF ANY MILDEW (FUNGI)!

SILICONE JOINTS in sanitation rooms (toilets, bathrooms, showers, etc.) are particularly exposed to presence of mildew (fungi). This results from several factors that create conditions facilitating their growth. It is important to know that mildew grows best in environment with increased humidity and moderate temperature. Constantly increased humidity makes it very easy for organic microparticles (soap residue, dirt, dust, grease) to stick to silicone joints, thus creating excellent conditions for mildew growth. Spores of mildew are deposited on such substrate, leading to quick appearance of mycelium.

We should also remember that appearance of mildew may result from reasons such as poor insulation or room ventilation, particularly at places where large amounts of water vapours are present (leading to condensation thereof). It is also necessary to remember about the temperatures prevalent in rooms: too low one limits convection movements of air, leading to the joint drying process progressing a lot slower.

When it comes to this aspect, it is very important to carry out good profiling of silicone joints, in a manner than enables free downflow of water (avoiding water stagnation) and spontaneous drying. Otherwise the fungicidal agent included in the 'BOSMAN' SANITARY SILICONE will be washed out. Wiping the joints dry after each use (e.g. after a bath) regularly is also an important preventive measure.

MORE +10%

310 ml
~~NO 280 ml~~

CE

**PERMANENTLY FLEXIBLE JOINT
RESISTANT TO FUNGI
AND MILDEW**

SANITARY SILICONE





ALL-PURPOSE SILICONE

SIB-UN-...-310



PROPERTIES

Permanently flexible, for outdoor and indoor use, resistant to weather conditions (including UV radiation and moisture). It creates a flexible, smooth and glossy joint. Perfect adhesion to smooth surfaces: glazed, tiled, and lacquered.

INTENDED USE

The all-purpose silicone is used for making flexible sealing of joints between building materials and finishing elements. Window glazing (mainly in wooden frames). Universal construction sealing - boatbuilding, automotive industry (in combination with glass, ceramics, tiles, varnished wood, stainless steel, and enameled surfaces).

LOGISTIC INFORMATION

COLOUR	CAPACITY	PACKAGING TYPE	COLLECTIVE PACKAGING	QUANTITY ON A PALLET
<input type="checkbox"/> white	310 ml/60 ml	cartridge / tube	15 pcs / 50 pcs	1500 pcs / 1500 pcs
<input type="checkbox"/> colourless	310 ml/60 ml	cartridge / tube	15 pcs / 50 pcs	1500 pcs / 1500 pcs
<input type="checkbox"/> brown	310 ml	cartridge	15 pcs	1500 pcs
<input type="checkbox"/> grey	310 ml	cartridge	15 pcs	1500 pcs
<input type="checkbox"/> black	310 ml	cartridge	15 pcs	1500 pcs

ALL-PURPOSE SILICONE

in a 600 ml film packaging

SIB-UN-...



PROPERTIES

Permanently flexible, for outdoor and indoor use, resistant to weather conditions (including UV radiation and moisture). It creates a flexible, smooth and glossy joint. Perfect adhesion to smooth surfaces: glazed, tiled, and lacquered.

INTENDED USE

The all-purpose silicone is used for making flexible sealing of joints between building materials and finishing elements. Window glazing (mainly in wooden frames). Universal construction sealing - boatbuilding, automotive industry (in combination with glass, ceramics, tiles, varnished wood, stainless steel, and enameled surfaces).

LOGISTIC INFORMATION

COLOUR	CAPACITY	PACKAGING TYPE	COLLECTIVE PACKAGING	QUANTITY ON A PALLET
<input type="checkbox"/> white	600 ml	film	20 pcs	1200 pcs
<input type="checkbox"/> colourless	600 ml	film	20 pcs	1200 pcs

SANITARY SILICONE

SIB-SA-...-310



PROPERTIES

It contains a fungicidal agent. Provides permanent colouring. Creates a permanent flexible and tight joint (protects against water leakage and penetration by dirt).

INTENDED USE

The sanitary silicone is used for flexible sealing in sanitary rooms (in combination with glass, ceramics, tiles, terracotta, varnished wood, stainless steel, and enameled surfaces). For sealing of bathtubs, washbasins, shower bases, shower cabins, toilet bowls, worktop joints, etc., and for corner jointing of ceramic tiles (flexible joint).

LOGISTIC INFORMATION

COLOUR	CAPACITY	PACKAGING TYPE	COLLECTIVE PACKAGING	QUANTITY ON A PALLET
<input type="checkbox"/> white	310 ml	cartridge	15 pcs	1500 pcs
<input type="checkbox"/> colourless	310 ml	cartridge	15 pcs	1500 pcs
<input type="checkbox"/> beige	310 ml	cartridge	15 pcs	1500 pcs

SANITARY SILICONE

in a 600 ml film packaging

SIB-SA-...



PROPERTIES

It contains a fungicidal agent. Provides permanent colouring. Creates a permanent flexible and tight joint (protects against water leakage and penetration by dirt).

Perfect adhesion to smooth surfaces: glazed, tiled, and lacquered.

INTENDED USE

The sanitary silicone is used for flexible sealing in sanitary rooms (in combination with glass, ceramics, tiles, terracotta, varnished wood, stainless steel, and enameled surfaces). For sealing of bathtubs, washbasins, shower bases, shower cabins, toilet bowls, worktop joints, etc., and for corner jointing of ceramic tiles (flexible joint).

LOGISTIC INFORMATION

COLOUR	CAPACITY	PACKAGING TYPE	COLLECTIVE PACKAGING	QUANTITY ON A PALLET
<input type="checkbox"/> white	600 ml	film	20 pcs	1200 pcs
<input type="checkbox"/> colourless	600 ml	film	20 pcs	1200 pcs

GLAZIER'S SILICONE

SIB-SZ...-310



PROPERTIES

Tightly adhesive to glass, for outdoor and indoor use, resistant to weather conditions (including UV radiation and moisture). It creates a flexible, smooth and glossy joint.

INTENDED USE

The glazier's silicone is used for glazing wooden windows, cabinets, counters, terraria, advertising panels, furniture, and glass showcases. It is used also for flexible sealing of joints between building materials and finishing elements in combination with glass, varnished wood, enameled steel, ceramics, and tiles.



LOGISTIC INFORMATION

COLOUR	CAPACITY	PACKAGING TYPE	COLLECTIVE PACKAGING	QUANTITY ON A PALLET
<input type="checkbox"/> white	310 ml	cartridge	15 pcs	1500 pcs
<input type="checkbox"/> colourless	310 ml	cartridge	15 pcs	1500 pcs
<input type="checkbox"/> brown	310 ml	cartridge	15 pcs	1500 pcs

GLAZIER'S SILICONE in a 600 ml film packaging

SIB-SZ...-600



PROPERTIES

Tightly adhesive to glass, for outdoor and indoor use, resistant to weather conditions (including UV radiation and moisture). It creates a flexible, smooth and glossy joint.

INTENDED USE

The glazier's silicone is used for glazing wooden windows, cabinets, counters, terraria, advertising panels, furniture, and glass showcases. It is used also for flexible sealing of joints between building materials and finishing elements in combination with glass, varnished wood, enameled steel, ceramics, and tiles.



LOGISTIC INFORMATION

COLOUR	CAPACITY	PACKAGING TYPE	COLLECTIVE PACKAGING	QUANTITY ON A PALLET
<input type="checkbox"/> white	600 ml	film	20 pcs	1200 pcs
<input type="checkbox"/> colourless	600 ml	film	20 pcs	1200 pcs

NEUTRAL BUILDING SILICONE

SIB-NE...-310



PROPERTIES

It forms an odourless, durable, and flexible compound. It exhibits perfect adhesion to smooth and porous surfaces (e.g. glass, ceramics, aluminium, PVC, concrete, brick, wood). The product requires no prior surface priming; it is resistant to aging, resistant to weather conditions, temperature, ozone and UV radiation; it is not corrosive for metals.

INTENDED USE

The neutral silicone is used for standard and contact glazing, sealing of surfaces covered with a protective agent (e.g. enamel, varnish), circumferential sealing, and for expansion joints. For sealing and filling in automotive, aircraft, power, and electronics industries.



LOGISTIC INFORMATION

COLOUR	CAPACITY	PACKAGING TYPE	COLLECTIVE PACKAGING	QUANTITY ON A PALLET
<input type="checkbox"/> white	310 ml	cartridge	15 pcs	1500 pcs
<input type="checkbox"/> colourless	310 ml	cartridge	15 pcs	1500 pcs
<input type="checkbox"/> grey	310 ml	cartridge	15 pcs	1500 pcs

NEUTRAL BUILDING SILICONE in a 600 ml film packaging

SIB-NE...



PROPERTIES

It forms an odourless, durable, and flexible compound. It exhibits perfect adhesion to smooth and porous surfaces (e.g. glass, ceramics, aluminium, PVC, concrete, brick, wood). The product requires no prior surface priming; it is resistant to aging, resistant to weather conditions, temperature, ozone and UV radiation; it is not corrosive for metals.

INTENDED USE

The neutral silicone is used for standard and contact glazing, sealing of surfaces covered with a protective agent (e.g. enamel, varnish), circumferential sealing, and for expansion joints. For sealing and filling in automotive, aircraft, power, and electronics industries.



LOGISTIC INFORMATION

COLOUR	CAPACITY	PACKAGING TYPE	COLLECTIVE PACKAGING	QUANTITY ON A PALLET
<input type="checkbox"/> white	600 ml	film	20 pcs	1200 pcs
<input type="checkbox"/> colourless	600 ml	film	20 pcs	1200 pcs



PRODUCT CATALOGUE

SILICONE / SILICONES - ECONOMIC SERIES FOR EVERYBODY / CHEMICAL ANCHOR

HIGH-TEMPERATURE SILICONE

SIB-WYS-...



PROPERTIES

Chemical resistant liquid gasket replacing traditional automotive gaskets (rubber, clinker, cork, paper, felt, and asbestos gaskets). Easy to use regardless of surface shape. Resistant to UV radiation, water, salt and many chemical agents such as petrol, oils, greases, coolants, hydraulic fluids, and freezeproof liquids. It contains no solvents.

INTENDED USE

High-temperature silicone is used for sealing joints characterised by high chemical and thermal resistance (between -60°C and +350°C). For automotive sealing (e.g. water pumps, valve covers, oil sumps, timing gear chain covers, thermostat shields). For heating technology system (boilers, accumulators, preheaters), flue gas conduits, pumps, filters, thermostats, furnaces, and cookers. Do not use for sealing carburettor and cylinder heads.



LOGISTIC INFORMATION

COLOUR	CAPACITY	PACKAGING TYPE	COLLECTIVE PACKAGING	QUANTITY ON A PALLET
red	310 ml / 40 ml	cartridge / tube	15 pcs / 50 pcs	1500 pcs / 5000 pcs
black	310 ml / 40 ml	cartridge / tube	15 pcs / 50 pcs	1500 pcs / 5000 pcs

ALL-PURPOSE SILICONE ECONOMIC SERIES FOR EVERYBODY

SI-UN-...-280



PROPERTIES

'Bosman' is an all-purpose, one-component, silicone sealing material that cures as a result of reaction with airborne moisture and creates a flexible and durable filling layer. This sealant is resistant to UV radiation and variable weather conditions within a wide temperature range. For outdoor and indoor use.

INTENDED USE

The all-purpose silicone /ECONOMIC SERIES FOR EVERYBODY/ has the following intended use: as glazing putty for windows, display panes, signs, and tables, as sealant for conduits and electrical cable ducts; in building industry as an all-purpose sealing compound for filling gaps between building materials and finishing elements, and for various industrial sealing works. Moreover, it can be used as protection of PU foams against UV radiation, for all-purpose domestic application, and for sealing cars and camping trailers.



LOGISTIC INFORMATION

COLOUR	CAPACITY	PACKAGING TYPE	COLLECTIVE PACKAGING	QUANTITY ON A PALLET
white	280 ml	cartridge	15 pcs	1500 pcs
colourless	280 ml	cartridge	15 pcs	1500 pcs

SANITARY SILICONE ECONOMIC SERIES FOR EVERYBODY

SI-SA-...-280



PROPERTIES

The 'Bosman' sanitary sealant is a quick-drying, one-component, silicone-based sealing material that contains a fungicidal agent preventing mildew formation and growth. As a result of reacting with airborne moisture, it cures to create a non-shrinkable flexible compound that does not crumble away. As a sealant, it is characterized by perfect adherence to glass and ceramics, porcelain, metal, wood and plastics. It is recommended especially for use in kitchens, bathrooms, and rooms with high humidity.

INTENDED USE

The sanitary silicone /ECONOMIC SERIES FOR EVERYBODY/ is intended for sealing kitchen sinks and pointing joints of kitchen and laboratory worktops, sealing bath tub and washbasin rims, shower cubicles, and swimming pools, pointing ceramic tiles and corner joints, and sealing of water supply and sewerage systems, pipes, and PVC connectors.



LOGISTIC INFORMATION

COLOUR	CAPACITY	PACKAGING TYPE	COLLECTIVE PACKAGING	QUANTITY ON A PALLET
white	280 ml	cartridge	15 pcs	1500 pcs
colourless	280 ml	cartridge	15 pcs	1500 pcs

FIREPLACE SEALANT 1500°C

SIB-KOMIN-300



PROPERTIES

For indoor use. Protect against water. After it cures completely, it is resistant to temperature up to +1500°C and fire. Does not contain asbestos. No harmful emissions during heating. Rigid and very hard - do not use in expansion joints. Total drying time of up to 96 hours.

INTENDED USE

The fireplace sealant is used for sealing gaps and joints in areas exposed to direct contact with fire (e.g. fireplaces, grates, chimneys, boilers, ovens, furnaces, and fireplace elements), and sealing fireproof ceramics and chamotte.



LOGISTIC INFORMATION

COLOUR	CAPACITY	PACKAGING TYPE	COLLECTIVE PACKAGING	QUANTITY ON A PALLET
black	300 ml	cartridge	12 pcs	1440 pcs





**PERFECT WHITE COLOUR
PLASTIC AND FLEXIBLE
PAINTING WITHOUT
SCRATCHES, CRACKS, AND
DISCOLOURATIONS**

INDOOR ACRYL ECONOMIC SERIES FOR EVERYBODY

AKB-BI-280

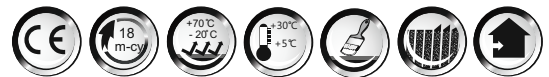


PROPERTIES

BOSMAN AKRYL is a practically odourless material, intended mainly for indoor use. It is neutral, and suitable for chemical coating with paints and lacquers.

INTENDED USE

Acryl /ECONOMIC SERIES FOR EVERYBODY/ is intended for filling gaps in concrete, plaster and bricks, filling scratches and cracks on walls and ceilings before painting, filling joints of plasterboards before finishing, sealing window and door frames, sealing and joining aerated concrete, and filling any cavities and gaps in joints of walls, ceilings, stairs, skirting boards and window sills.



LOGISTIC INFORMATION

COLOUR	CAPACITY	PACKAGING TYPE	COLLECTIVE PACKAGING	QUANTITY ON A PALLET
☐ white	280 ml	cartridge	15 pcs	1500 pcs

INDOOR ACRYL

AKB-...-310



PROPERTIES

Permanently plastic and flexible after it cures completely; can be painted with paint and lacquer coats; odourless and chemically neutral. Resistant to cracking and contraction scratch formation. Very good adherence to porous substrates (e.g. concrete, plaster, gypsum, building ceramics, stone, wood). Easy to apply and form.

INTENDED USE

The indoor acryl is intended for filling cracks, scratches, gaps, and cavities in masonry, walls, and ceilings, sealing finishings (e.g. around window sills and sashes, doorposts, handrails, and stairs), pointing of corner joints, wallboards and floor slabs when furnishing interiors made of plasterboards. Do not use in areas exposed to constant impact of water (use 'Bosman' Outdoor Acryl instead).



LOGISTIC INFORMATION

COLOUR	CAPACITY	PACKAGING TYPE	COLLECTIVE PACKAGING	QUANTITY ON A PALLET
☐ white	310 ml	cartridge	15 pcs	1500 pcs
■ brown	310 ml	cartridge	15 pcs	1500 pcs

INDOOR ACRYL in a 600 ml film packaging

AKB-

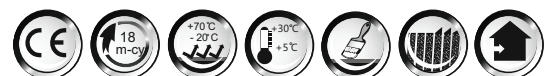


PROPERTIES

Permanently plastic and flexible after it cures completely; can be painted with paint and lacquer coats; odourless and chemically neutral. Resistant to cracking and contraction scratch formation. Very good adherence to porous substrates (e.g. concrete, plaster, gypsum, building ceramics, stone, wood). Easy to apply and form.

INTENDED USE

The indoor acryl is intended for filling cracks, scratches, gaps, and cavities in masonry, walls, and ceilings, sealing finishings (e.g. around window sills and sashes, doorposts, handrails, and stairs), pointing of corner joints, wallboards and floor slabs when furnishing interiors made of plasterboards. Do not use in areas exposed to constant impact of water (use 'Bosman' Outdoor Acryl instead).



LOGISTIC INFORMATION

COLOUR	CAPACITY	PACKAGING TYPE	COLLECTIVE PACKAGING	QUANTITY ON A PALLET
☐ white	600 ml	film	20 pcs	1200 pcs





OUTDOOR ACRYL - WATER RESISTANT

AKB-BI-ZE-310



PROPERTIES

Resistant to rain immediately after application. To be used at any climate conditions (high resistance to ageing). Permanently plastic and flexible after it cures completely; can be painted with paint and lacquer coats; odourless and chemically neutral (it is not corrosive for metals). Resistant to cracking and contraction scratch formation. Very good adherence to porous substrates (e.g. concrete, plaster, gypsum, building ceramics, stone, wood).

INTENDED USE

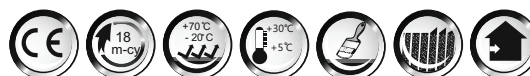
The outdoor acryl is intended for filling cracks, scratches, gaps, and cavities in concrete, plaster, gypsum, wood, facades, walls, and ceilings, sealing finishings at window sills and sashes, roller blinds, balcony balustrades, and plinths, sealing thermal insulation systems, joints between EPS and woodwork, ironwork, and flashed surfaces, and sealing facade corners.

LOGISTIC INFORMATION

COLOUR	CAPACITY	PACKAGING TYPE	COLLECTIVE PACKAGING	QUANTITY ON A PALLET
<input type="checkbox"/> white	280 ml	cartridge	15 pcs	1500 pcs

ACRYL FOR PLASTERBOARDS

AKB-K-G-310



PROPERTIES

Perfectly white, quick-drying, with increased mechanical resistance and very low shrinkage, permanently plastic and flexible after it cures completely, can be painted with paint and lacquer coats, odourless, chemically neutral, resistant to cracking and contraction scratch formation (perfect for built-in furniture in recesses and garrets, and installation of wardrobes with sliding door).

INTENDED USE

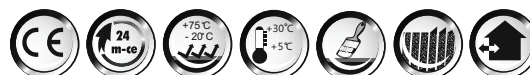
The acryl for plasterboards is intended for filling corner joints and expansion joints in connections between plasterboards and similar finishing materials in dry interior furnishing systems, pointing joints between wallboards and flooring, skirting boards, suspended ceilings or window sills, and joining boards with door frames, masking slats, and woodwork.

LOGISTIC INFORMATION

COLOUR	CAPACITY	PACKAGING TYPE	COLLECTIVE PACKAGING	QUANTITY ON A PALLET
<input type="checkbox"/> white	310 ml	film	15 pcs	1500 pcs

ACRYL PUTTY - FAST DRYING

AKB-SZPAC-300



PROPERTIES

Ultrafast acryl putty with paste texture and very short drying time. Minimum shrinkage ensures an aesthetic joint, free of cracks. Can be painted after 10-20 minutes. Ready to use. It can be applied in a layer thicker than in case of shrinkable putties that need to be applied in multiple layers (which saves time and money). Easy to apply (also when luting ceilings - it is lighter than water by half!).

INTENDED USE

The acryl putty is intended for pointing plasterboards, filling and repairing scratches, cracks, gaps, cavities, and indoor joints in walls and ceilings, especially during painting and similar finishing and renovation works. masking bolt or screw heads (e.g. when installing plasterboards, wainscot, or suspended ceilings).

LOGISTIC INFORMATION

COLOUR	CAPACITY	PACKAGING TYPE	COLLECTIVE PACKAGING	QUANTITY ON A PALLET
<input type="checkbox"/> white	300 ml	cartridge	12 pcs	1248 pcs

ACRYL FOR PLASTER WORK - GRAINY

AKB-TYNKU-310



PROPERTIES

It contains fine-grained gravel. For outdoor and indoor use. It is not corrosive for metals. After it cures completely, it can be painted and lacquered (a covering test is recommended!). Odourless, chemically neutral. Resistant to weather conditions.

INTENDED USE

Filling of scratches, gaps, cracks, corner joints in facades, structural and mosaic plasters, pebbledash, or similar plasters with sharp float finish. Thanks to its special granular structure, the filling becomes invisible on the plasterwork. It is perfect for any type of plaster, cellular concrete, building ceramics, EPS and similar materials with granular structure.

LOGISTIC INFORMATION

COLOUR	CAPACITY	PACKAGING TYPE	COLLECTIVE PACKAGING	QUANTITY ON A PALLET
<input type="checkbox"/> white	310 ml	cartridge	15 pcs	1500 pcs



BULL/GORILLA ASSEMBLY ADHESIVES

FOR ALL SURFACES

EKSTREMALNY

- STRONGER
- FASTER
- MORE FLEXIBLE
- WATERPROOF
- PAINTABLE

400
kg/m²



**KLEJ + uszczelniacz
HYBRYDOWY
DO WSZYSTKIEGO
EXTREME**
UZYWAJ
GDZIE CHCESZ I JAK CHCESZ



EXTREME BOSMAN NGLUE + SEALANT HYBRID BULL

KLB-EKSTREMALNY-290



USE
WHERE YOU WANT AND HOW YOU WANT

VERTICAL
GLUING



PRZEZNACZENIE

Universal adhesive based on a hybrid polymer (silane-modified polyurethane) characterized by high initial gluing strength. Gluing is sealing all building materials: natural stone, wood, concrete, metal, brick, glass, ceramics, plaster, polyurethane, plastics, chipboard, etc. Connections of galvanized sheet metal, brass and other metals. High-quality flexible glue for general use both indoors and outdoors. The adhesive was created based on modern hybrid technology, which allows gluing on vertical surfaces. Particularly recommended for gluing heavy elements.



LOGISTIC INFORMATION

COLOUR	CAPACITY	PACKAGING TYPE	COLLECTIVE PACKAGING	QUANTITY ON A PALLET
<input type="checkbox"/> white	290 ml	cartridge	12 pcs	1440 pcs

GORILLA



STRONG AND FLEXIBLE BOND
IMMEDIATE HOLD
HYBRID TECHNOLOGY

200
kg/m²



GORILLA ASSEMBLY ADHESIVE

KLB-GORILLA-...-290



PROPERTIES

A high quality flexible adhesive for all kinds of applications, both indoors and outdoors. It was made on the basis of a cutting-edge hybrid technology enabling bonding on vertical surfaces. It is recommended in particular for bonding heavy elements. Very strong initial hold (EXTRA STRONG ADHESIVE), quick curing, and strong and flexible bond.

INTENDED USE

A high quality product suitable for bonding, filling and sealing both indoors and outdoors. Panels, finishing slats, tiles, insulations, thresholds, joinery, stuccowork, and decorations. Intended for wood and wood derivatives, EPS, PVC, and similar materials such as: gypsum, steel, glass, copper, brick, concrete, stone, etc.



LOGISTIC INFORMATION

COLOUR	CAPACITY	PACKAGING TYPE	COLLECTIVE PACKAGING	QUANTITY ON A PALLET
<input type="checkbox"/> white	290 ml	cartridge	12 pcs	1440 pcs





CHEMICAL ANCHOR

CHEMICAL ANCHOR



PROPERTIES

Intender for application using a standard pistol for extrusion of compound cartridges. Nearly odourless.

INTENDED USE

For anchoring M8-M20 steel threaded rods and sections (balustrades, handrails, brackets, pillars, posts, fences, air conditioners, lamp brackets, awnings, gates, frames, dish antennas, washbasins, pedestals) in non-cracked concrete (min. class C20/25), silicates, full bricks and cored bricks (together with perforated sleeves).



LOGISTIC INFORMATION

COLOUR	CAPACITY	PACKAGING TYPE	COLLECTIVE PACKAGING	QUANTITY ON A PALLET
<input type="checkbox"/> grey	300 ml	cartridge	12 pcs	1008 pcs

NEOPRENE ASSEMBLY ADHESIVE

internal / external

KLB-MO-300



PROPERTIES

For indoor and outdoor use; for horizontal and vertical surfaces (it does not drip) in combination with smooth and porous substrates, both absorptive and non-absorptive. Quick-drying, very viscous (immediate adhesion to a substrate), and with very high bonding strength (total cure time: 72 hours). After the curing is completed, it forms a flexible bond resistant to water and weather conditions. Tensile strength 24 kg/cm² (after seasoning for 168 h at temperature of +20°C). Thermal resistance after curing: from -20°C to +70°C.

INTENDED USE

Neoprene assembly adhesive is used for bonding building materials and finishing elements made of wood and wood derivative materials, PVC and similar plastics, ceramics, gypsum, concrete, stone, steel, metals, etc., bonding finishing slats (e.g. corner slats, skirting boards), masking sections, thresholds, wall panels, window sills, cornices, plasterboards, ceramic tiles, and stone tiles, and bonding handles, hooks, emblems, hangers, etc.



LOGISTIC INFORMATION

COLOUR	CAPACITY	PACKAGING TYPE	COLLECTIVE PACKAGING	QUANTITY ON A PALLET
<input type="checkbox"/>	300 ml			



silicones | foams | impregnants | adhesives

MULTI-PURPOSE SBS-BASED ASSEMBLY ADHESIVE

KLB-MO-WI-300



PROPERTIES

Quick-drying, universal application. It adheres very well to wood, glass, hard PVC, metals, and the majority of materials encountered in building industry, such as: bricks, concrete, and gypsum. A solvent-based assembly adhesive retains elasticity after drying. The joints are resistant to impact of water and temperature fluctuations up to +55°C.

INTENDED USE

Recommended for fixing panels, wall slats, skirting boards, thresholds, stairs, cornices, windows sills, plafonds, and stone and ceramic tiles.



LOGISTIC INFORMATION

COLOUR	CAPACITY	PACKAGING TYPE	COLLECTIVE PACKAGING	QUANTITY ON A PALLET
dark beige	300 ml	cartridge	15 pcs	1500 pcs

'AQUA' ACRYLIC ASSEMBLY ADHESIVE

KLB-MWODN-300



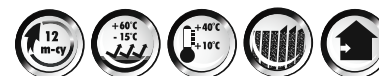
indoors

PROPERTIES

After curing it is white, permanently flexible, resistant to humidity and temperature from -15°C to +60°C. It contains no solvents, and it is odourless and environmentally friendly. For indoor use; for both horizontal and vertical surfaces (it does not drip).

INTENDED USE

The 'Aqua' acrylic assembly adhesive is used for bonding decorative elements made of PS (EPS), foam (except PE and PP), gypsum, MDF, cork, and materials of similar type, i.e. stuccowork, slats, sections, rosettes, ceiling panels, wall panels, screens, tiles, emblems, and info plates to the following materials: concrete, plaster, gypsum, wood, plasterboards, and another porous substrates.



LOGISTIC INFORMATION

COLOUR	CAPACITY	PACKAGING TYPE	COLLECTIVE PACKAGING	QUANTITY ON A PALLET
white	300 ml	cartridge	15 pcs	1500 pcs

SILICONE ADHESIVE FOR MIRRORS

KLB-SI-LU-300



PROPERTIES

Does not contain solvents. Super strong sealing adhesive with a neutral curing system. Intended for bonding and fixing mirrors and glass mosaics. Its color and texture enable using it also for sealing mirror edges. Excellent adhesion to most building materials (substrates), e.g. glass, tiles, varnished and raw wood, concrete, aerated concrete, cement mortars, glass laminates, metals, and also most non-plastic artificial materials.

INTENDED USE

Bonding mirror mosaics (mirror to mirror bonding), direct fixing of decorative mirrors on various substrates: glass, tiles, concrete, plasters, and in wooden, plastic, and metal frames.

neutral for mirrors



LOGISTIC INFORMATION

COLOUR	CAPACITY	PACKAGING TYPE	COLLECTIVE PACKAGING	QUANTITY ON A PALLET

50QB POLYURETHANE SEALANT -EXPANSIONS

POLI-SZAR-300



PROPERTIES

Permanently flexible within a wide range of temperatures from -30°C to +70°C. High immunity to ageing and variable atmospheric conditions. Resistant to impact of many fuels, mineral oils, and fats. High resistance to abrasion (road and pedestrian traffic). For outdoor and indoor use.

INTENDED USE

Facade and floor expansion joints. Roofwork sealants. Sealing of edge and hood profile joints. Sealing of corner joints of ceramic tiles with floor on balconies, loggias, and terraces. Steel structure sealing: halls made of composite panels, silos, containers, tanks, bodywork. Ventilation and air conditioning technology. Filling of scratches and cracks. Sealing in road construction (roads, bridges, parking lots), residential construction (floors, foundations), and hydrotechnical construction (shipyards, boat building).



LOGISTIC INFORMATION

COLOUR	CAPACITY	PACKAGING TYPE	COLLECTIVE PACKAGING	QUANTITY ON A PALLET
grey	300 ml	cartridge	12 pcs	1440 pcs

**XXX-100 SEALING POLYMER ADHESIVE
WHITE, NEW TECHNOLOGY**

POL-FL-BI-290



inside and outside

PROPERTIES

Permanently flexible after curing. For indoor and outdoor application. Insignificant shrinkage. High physical resistance (to water, mildew and fungi) and mechanical resistance (to vibrations and movements of building materials). Safe - it does not contain isocyanates, silicone, or solvents.

INTENDED USE

SEALING of joints and BONDING of building materials (panels, slats, thresholds, window sills, shelves, holders, frames) and finishing elements to smooth and porous substrates, on vertical and horizontal surfaces. Filling of gaps, pointing, also in sanitary rooms.

**3x BETTER
THAN SILICONE**

LOGISTIC INFORMATION

COLOUR	CAPACITY	PACKAGING TYPE	COLLECTIVE PACKAGING	QUANTITY ON A PALLET
<input type="checkbox"/> white	290 ml	cartridge	12 pcs	1440 pcs

**XXX-100 SEALING POLYMER ADHESIVE
COLOURLESS, CRYSTAL, NEW TECHNOLOGY**

POL-FL-XX-290



inside

PROPERTIES

Permanently flexible after curing. Can be used indoors. Insignificant shrinkage. High physical resistance (to water, mildew and fungi) and mechanical resistance (to vibrations and movements of building materials). Safe - it does not contain isocyanates, silicone, or solvents.

INTENDED USE

SEALING of joints and BONDING of building materials (panels, slats, thresholds, window sills, shelves, holders, frames) and finishing elements to smooth and porous substrates, on vertical and horizontal surfaces. Filling of gaps, pointing, also in sanitary rooms.

**3x BETTER
THAN SILICONE**

LOGISTIC INFORMATION

COLOUR	CAPACITY	PACKAGING TYPE	COLLECTIVE PACKAGING	QUANTITY ON A PALLET
<input type="checkbox"/> transparent	290 ml	cartridge	12 pcs	1440 pcs

PANELS
SLATS
THRESHOLDS
WINDOW
SILLS
DECORATIONS
FRAMES
HOLDERS
SHELVES
MIRRORS



**XXX
100
POLYMER
NEW TECHNOLOGY**

**3x
BETTER THAN SILICONE**



**PT
POLYMER
technology**

SEALS AND BONDS ANYTHING

100%

**GUARANTEED
TIGHTNESS**

SEALING ADHESIVE

ALL IN ONE



ROOFWORK SEALANT - ROOFWORK COMPOUND

DAT-DEK-310



PROPERTIES

Permanently plastic and flexible roofwork adhesive-sealant based on ecological mixture of bitumens and resins for roofing repair and insulation. It creates a permanent, durable and waterproof joint. It is intended for dry and wet substrates; it is not corrosive to zinc coated sheet metal and connectors. Perfect for roofing paper and bituminous materials of similar type, and also for sheet metal and mineral materials (e.g. concrete, mortar, and stone). It does not require mixing or heating. Resistant to weather, draining, peeling, and contraction scratch formation. It does not contain asbestos.

INTENDED USE

Roofwork sealant - The roofwork compound is used to seal and glue roofing paper, bituminous shingles, and corrugated plates, sealing leaks, cracks, seams, and sheet metal flashings, filling and sealing gaps around roof culverts, i.e. ventilation ducts, flues, gutters, downpipes, domes, skylights, chimneys, aerial masts, etc., and filling scratches and cracks in concrete elements before roofing paper or liquid bituminous membrane is applied. Do not use for areas constantly submerged in water or under constant water pressure.

LOGISTIC INFORMATION

COLOUR	CAPACITY	PACKAGING TYPE	COLLECTIVE PACKAGING	QUANTITY ON A PALLET
■ black	310 ml	cartridge	15 pcs	1500 pcs

RUBBER SEALANT FOR ROOFWORK

DAT-KA-...-310



PROPERTIES

Permanently plastic and flexible; for dry and wet substrates; can be painted after it cures completely (it is not corrosive for metals). Very good adherence to many materials such as: glass, tiles, ceramics, wood, stone, concrete, steel, aluminium, lead, zinc, etc. It does not contain silicone. Intended for outdoor and indoor applications at any climate conditions. Highly resistant to impact of UV and fungi.

INTENDED USE

The rubber roofwork sealant is used for sealing roofing (sheet steel tiles, roofing tiles), metal elements (e.g. gutters, downpipes, flashings, profiled metal sheets, roof window flanges, balustrades, and masts), emergency repairs, removing water leaks, and filling cracks in concrete and stone. In case of plastics it is necessary to carry out a test for tolerance of solvents contained in the product.

LOGISTIC INFORMATION

COLOUR	CAPACITY	PACKAGING TYPE	COLLECTIVE PACKAGING	QUANTITY ON A PALLET
■ brick red	310 ml	cartridge	15 pcs	1500 pcs
□ colourless	310 ml	cartridge	15 pcs	1500 pcs
■ brown	310 ml	cartridge	15 pcs	1500 pcs
■ grey	310 ml	cartridge	15 pcs	1500 pcs

ROOFWORK TAPE ALUMINIUM/COPPER/GREY

DAT-TA-...



INTENDED USE

The aluminium, copper and grey roofwork tape is intended for roofing works.



LOGISTIC INFORMATION

COLOUR	CAPACITY	PACKAGING TYPE	COLLECTIVE PACKAGING	QUANTITY ON A PALLET
■ grey				
□ aluminium				
■ copper				
	7,5 cm	reel	4 pcs	
	10 cm	reel	3 pcs	
	15 cm	reel	2 pcs	
	30 cm	reel	1 pcs	



PRODUCT CATALOGUE

CARTRIDGE ACCESSORIES

'BOSMAN' PROFESSIONAL PIPE GUN FOR CARTRIDGES

OSW-WYCIS-LUX

INTENDED USE

The gun is used for extruding silicones, adhesives, acryls, etc. from cartridges /plastic containers/.



LOGISTIC INFORMATION

CAPACITY	PACKAGE TYPE	COLLECTIVE PACKAGING	QUANTITY ON A PALLET
280 ml		12 pcs	480 pcs
290 ml		12 pcs	480 pcs
300 ml		12 pcs	480 pcs
310 ml		12 pcs	480 pcs

STANDARD SKELETON GUN FOR CARTRIDGES

OSW-SZ-310

INTENDED USE

The gun is used for extruding silicones, adhesives, acryls, etc. from cartridges /plastic containers/.



LOGISTIC INFORMATION

CAPACITY	PACKAGE TYPE	COLLECTIVE PACKAGING	QUANTITY ON A PALLET
280 ml		12 pcs	480 pcs
290 ml		12 pcs	480 pcs
300 ml		12 pcs	480 pcs
310 ml		12 pcs	480 pcs

GUN FOR SILICONE in 600 ml film packages

OSW-TUBA-600

INTENDED USE

The gun is used for extruding silicones, adhesives, acryls, etc. from 600 ml film packages.



LOGISTIC INFORMATION

CAPACITY	PACKAGE TYPE	COLLECTIVE PACKAGING	QUANTITY ON A PALLET
600 ml		pcs	

BOSMAN®

professional series
for everybody

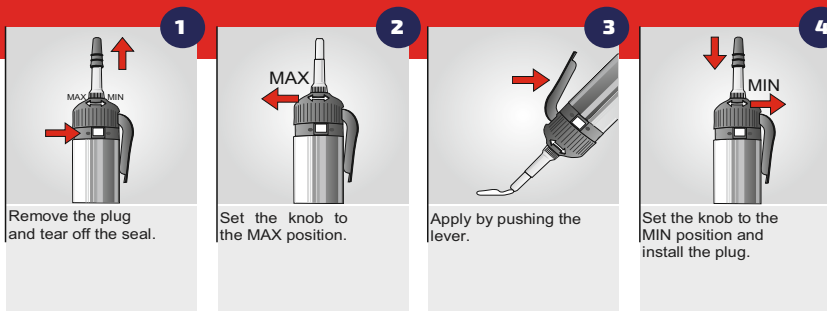
silicones | foams | impregnants | adhesives

WITH US, BUILDING AND RENOVATING IS EASIER



GAS CARTRIDGES

HOW TO USE A GAS CARTRIDGE



Before starting work, the gap or the smooth surface should be dried, cleaned, and degreased. It is recommended to put masking tape near the gap or the smooth surface in order to protect it against soiling. Remove the plug, tear off the seal, and set the knob to the MAX position. Apply the joining compound by pushing the lever. Smoothen the joint using a spatula moistened in water with soap and remove the masking tape immediately after finishing the processing. After using the cartridge, set the knob to the MIN position and install the plug.

ALL-PURPOSE SILICONE, GAS CARTRIDGE

SIL-UN-...-GAZ



PROPERTIES

Unique aerosolized product in a GAS CARTRIDGE; easy to apply as it does not require using a gun. Product for everybody. Additional advantage: extended shelf life. Creates a smooth and glossy joint that is permanently flexible.

INTENDED USE

The all-purpose silicone is used for flexible sealing of joints between building materials and finishing elements, glazing windows (mainly in wood frames), sealing in all kinds of construction - boat building, automotive industry (in combination with glass, ceramics, tiles, varnished wood, stainless steel, and enameled surfaces).

LOGISTIC INFORMATION

COLOUR	CAPACITY	PACKAGING TYPE	COLLECTIVE PACKAGING	QUANTITY ON A PALLET
<input type="checkbox"/> white	200 ml	gas cartridge	6 pcs	600 pcs
<input type="checkbox"/> colourless	200 ml	gas cartridge	6 pcs	600 pcs

SANITARY SILICONE, GAS CARTRIDGE

SIL-SA-...-GAZ



PROPERTIES

Unique aerosolized product in a GAS CARTRIDGE; easy to apply as it does not require using a gun. Product for everybody. Additional advantages: extended shelf life and the possibility of multiples uses after opening. Contains a fungicidal agent.

INTENDED USE

The sanitary silicone is used for flexible sealing in sanitary rooms (in combination with glass, ceramics, tiles, terracotta, varnished wood, stainless steel, and enameled surfaces). For sealing of bathtubs, washbasins, shower bases, shower cabins, toilet bowls, worktop joints, etc., and for corner jointing of ceramic tiles (flexible joint).

LOGISTIC INFORMATION

COLOUR	CAPACITY	PACKAGING TYPE	COLLECTIVE PACKAGING	QUANTITY ON A PALLET
<input type="checkbox"/> white	200 ml	gas cartridge	6 pcs	600 pcs
<input type="checkbox"/> colourless	200 ml	gas cartridge	6 pcs	600 pcs

HIGH-TEMPERATURE SILICONE, GAS CARTRIDGE

SIL-WY-...-G



PROPERTIES

Unique aerosolized product in a GAS CARTRIDGE; easy to apply as it does not require using a gun. Product for everybody. Additional advantages: extended shelf life, chemical resistant liquid gasket, replaces traditional automotive gaskets.

INTENDED USE

The high-temperature silicone is used for sealing joints characterised by high chemical and thermal resistance (between -60°C and +350°C), for automotive sealing (e.g. water pumps, valve covers, oil sumps, timing gear chain covers, thermostat shields), and for heating technology systems (boilers, accumulators, preheaters), flue gas conduits, pumps, filters, thermostats, furnaces, and cookers. Do not use for sealing carburettor and cylinder heads.

LOGISTIC INFORMATION

COLOUR	CAPACITY	PACKAGING TYPE	COLLECTIVE PACKAGING	QUANTITY ON A PALLET
<input type="checkbox"/> red	200 ml	gas cartridge	6 pcs	600 pcs
<input type="checkbox"/> black	200 ml	gas cartridge	6 pcs	600 pcs





BUILDING AND REPAIRING IS EASIER WITH OUR PRODUCTS



PU ASSEMBLY FOAMS

WHY SHOULD THE FOAM BE MOISTENED?

An important step during foam application is the additional moistening of substrate using a sprinkler. This action is absolutely necessary, since the amount of moisture (water vapours) present in the environment is insufficient. And will speed up the foam curing best? Water vapours, nothing else. What is considered perfect conditions for its application is the temperature of +20°C and air humidity fluctuating up to 60%. It is necessary to know that the lack of sufficient amount of moisture (water vapours) leads to deterioration of insulating properties and dimensional instability (secondary expansion or contraction) or subsidence of foam. It is estimated that for appropriate application of a single 750 ml can of foam (obviously depending on ambient conditions) it is necessary to use about 70 ml of water. Here it is also necessary to mention winter foams (temperature of -10°C), which may require even over 10 h to bond. It is also important to moisten the foam surface using a water sprinkler after filling the gap. At the same time, it is important to avoid sprinkling the substrate with water in temperature of less than 0°C, since then the water will turn into a thin layer of ice that will reduce foam adhesion.



BOSMAN
seria profesjonalna dla każdego

PIANA PISTOLETOWA
POLIURETANOWA

BOSMAN
seria profesjonalna dla każdego

PIANA PISTOLETOWA
POLIURETANOWA

BOSMAN
seria profesjonalna dla każdego

PIANA PISTOLETOWA
SUPER NISKOPRĘŻNA
SUPER LOW EXPANDING

PVC
-5°C +30°C
WIELOSEZONOWA
ALL SEASONS

SZYBKOSCHNĄCA
QUICK-DRYING

BARDOZO DOBRZE PRZYCZEPNA DO PVC
VERY WELL DO ADHESIVE TO PVC

AKUSTYCZNA
ACOUSTIC

TRWALE ELASTYCZNA
PERMANENTLY FLEXIBLE

WYSOKA WYDAJNOŚĆ
HIGH PERFORMANCE

- DRZWI
- OKNA
- ELEMENTY PVC

Instytut Techniki Budowlanej

**PRECISE APPLICATION
EXCELLENT INSULATION**

HOW TO USE THE ONE-COMPONENT ASSEMBLY FOAM



<p>1 Clean and degrease the working surfaces thoroughly.</p>	<p>2 The gap to be filled with foam should be thoroughly moistened with water using a sprayer. Install the frames using mechanical connectors and secure them with spacers.</p>	<p>3 The foam should be stored in room temperature for a day prior to application. The optimal foam can temperature is from +5°C to +20°C.</p>	<p>4 Before use, the foam should be shaken vigorously in order to mix its contents thoroughly.</p>	<p>5 A gun foam should be installed into a gun.</p>
<p>6 Install the tube on the tube foam container.</p>	<p>7 Vertical working gaps should be filled from bottom to top, with a zig-zag movement at 50% /tube foam/ or 70% /gun foam/ distance. The maximum gap width should be 4 cm, and gap depth - 5 cm. In case of larger gaps, the foam should be applied in layers in 15 minute intervals. Prior to applying the next layer, the last one should be moistened.</p>	<p>8 Excess foam should be cut off after about 60 minutes /tube foam/ or 45 minutes /gun foam/.</p>	<p>9 The foam should be finished by covering it with gypsum, mortar, silicone, or acrylic in order to protect it against UV radiation.</p>	<p>10 Freshly applied foam can be used by means of a special agent - 'BOSMAN' REMOVER. The remains of cured foam should be removed using the 'BOSMAN' FOAM REMOVER intended for cured foam. Before use, carry out a test on a small amount of product.</p>

'BOSMAN' TUBE FOAM

PPB-500 PPB-750



INTENDED USE

'BOSMAN' SUMMER PU foam is a one-component sealing and installation PU foam that undergoes curing under the influence of airborne moisture. Surface drying time: about 20 minutes; full curing time: about 12 hours. 'Bosman' foam is perfectly adhesive to most building materials, except PE, silicone, and PS. The cured foam can be cut, polished, plastered, and painted; however, it should be protected against direct sunlight. It has many uses in the building industry, for example in building woodwork assembling, filling and insulating of cable bushings and pipe culverts, thermal insulation of water supply, sewerage and central heating systems, silencing and sealing of partition walls and car or boat cabs, and joining and sealing of prefabricated wooden elements during timber frame construction.



LOGISTIC INFORMATION

CAPACITY	PACKAGING TYPE	COLLECTIVE PACKAGING	QUANTITY ON A PALLET
500 ml	can	16 pcs	960 pcs
750 ml	can	16 pcs	768 pcs





'BOSMAN' TUBE FOAM

PPB-ZI-500 PPB-ZI-750

WINTER



-10°C to +30°C

INTENDED USE

'BOSMAN' WINTER PU foam is a one-component sealing and installation PU foam that undergoes curing under the influence of airborne moisture. Surface drying time: about 20 minutes; full curing time: about 12 hours. 'Bosman' foam is perfectly adhesive to most building materials, except PE, silicone, and PS. The cured foam can be cut, polished, plastered, and painted; however, it should be protected against direct sunlight. It has many uses in the building industry, for example in building woodwork assembling, filling and insulating of cable bushings and pipe culverts, thermal insulation of water supply, sewerage and central heating systems, silencing and sealing of partition walls and car or boat cabs, and joining and sealing of prefabricated wooden elements during timber frame construction.



LOGISTIC INFORMATION

CAPACITY	PACKAGING TYPE	COLLECTIVE PACKAGING	QUANTITY ON A PALLET
500 ml	can	16 pcs	960 pcs
750 ml	can	16 pcs	768 pcs



'BOSMAN' GUN FOAM LOW-PRESSURE

PPB-PI-750

SUMMER



INTENDED USE

'BOSMAN' SUMMER PU foam is a one-component sealing and installation PU foam that undergoes curing under the influence of airborne moisture. Surface drying time: about 20 minutes; full curing time: about 12 hours. 'Bosman' foam is perfectly adhesive to most building materials, except PE, silicone, and PS. The cured foam can be cut, polished, plastered, and painted; however, it should be protected against direct sunlight. It has many uses in the building industry, for example in building woodwork assembling, filling and insulating of cable bushings and pipe culverts, thermal insulation of water supply, sewerage and central heating systems, silencing and sealing of partition walls and car or boat cabs, and joining and sealing of prefabricated wooden elements during timber frame construction.



LOGISTIC INFORMATION

CAPACITY	PACKAGING TYPE	COLLECTIVE PACKAGING	QUANTITY ON A PALLET
750 ml	can	16 pcs	768 pcs



'BOSMAN' GUN FOAM LOW-PRESSURE

PPB-PI-ZI-750

WINTER



-10°C to +30°C

INTENDED USE

'BOSMAN' WINTER PU foam is a one-component sealing and installation PU foam that undergoes curing under the influence of airborne moisture. Surface drying time: about 20 minutes; full curing time: about 12 hours. 'Bosman' foam is perfectly adhesive to most building materials, except PE, silicone, and PS. The cured foam can be cut, polished, plastered, and painted; however, it should be protected against direct sunlight. It has many uses in the building industry, for example in building woodwork assembling, filling and insulating of cable bushings and pipe culverts, thermal insulation of water supply, sewerage and central heating systems, silencing and sealing of partition walls and car or boat cabs, and joining and sealing of prefabricated wooden elements during timber frame construction.



LOGISTIC INFORMATION

CAPACITY	PACKAGING TYPE	COLLECTIVE PACKAGING	QUANTITY ON A PALLET
750 ml	can	16 pcs	768 pcs



'BOSMAN LUX' SUPER EFFICIENT LOW-PRESSURE GUN FOAM

PPB-LU-PI-900

SUMMER



INTENDED USE

'Bosman LUX' SUMMER foam is a one-component sealing and installation PU foam that undergoes curing under the influence of airborne moisture. Surface drying time: 20 minutes; full curing time: 12 hours. 'Bosman Lux' foam is perfectly adhesive to most building materials, except PE, silicone, and PS. The cured foam can be cut, polished, plastered, and painted; however, it should be protected against direct sunlight. 'Bosman' foam is recommended especially for installation of doors and windows. Thanks to its perfect expandability, it penetrates all pores and hollows, enabling complete sealing and insulation. It has many uses in the building industry, for example in filling and insulating of cable bushings and pipe culverts, thermal insulation of water supply, sewerage and central heating systems, silencing and sealing of partition walls and car or boat cabs, and joining and sealing of prefabricated wooden elements during timber frame construction.



LOGISTIC INFORMATION

CAPACITY	PACKAGING TYPE	COLLECTIVE PACKAGING	QUANTITY ON A PALLET
860 ml	can	16 pcs	768 pcs



'BOSMAN LUX' SUPER EFFICIENT LOW-PRESSURE GUN FOAM

PPB-PI-LU-ZI

WINTER



-10°C to +30°C



INTENDED USE

'BOSMAN' LUX WINTER foam is a one-component sealing and installation PU foam that undergoes curing under the influence of airborne moisture. Surface drying time: 20 minutes; full curing time: 12 hours. 'Bosman Lux' foam is perfectly adhesive to most building materials, except PE, silicone, and PS. The cured foam can be cut, polished, plastered, and painted; however, it should be protected against direct sunlight. 'Bosman' foam is recommended especially for installation of doors and windows. Thanks to its perfect expandability, it penetrates all pores and hollows, enabling complete sealing and insulation. It has many uses in the building industry, for example in filling and insulating of cable bushings and pipe culverts, thermal insulation of water supply, sewerage and central heating systems, silencing and sealing of partition walls and car or boat cabs, and joining and sealing of prefabricated wooden elements during timber frame construction.



LOGISTIC INFORMATION

CAPACITY	PACKAGING TYPE	COLLECTIVE PACKAGING	QUANTITY ON A PALLET
896 ml	can	16 pcs	768 pcs

FOAMS

GOLD, SILVER, 80L Lux

NEW

professional

**SUPER-LOW-PRESSURE
SUPER ADHESIVE
SUPER EFFICIENT
PERMANENTLY FLEXIBLE**

'GOLD SUPER' GUN FOAM LOW PRESSURE, GOLD COLOUR, ALL SEASON

PPB-PI-GOLD



All season

VERY LOW PRESSURE / FAST DRYING



INTENDED USE

'Bosman GOLD' foam is a one-component sealing and installation PU foam that undergoes curing under the influence of airborne moisture. Surface drying time: 10-14 minutes; complete curing time: max. 18 hours. 'Bosman' foam is super-low-pressure, quick-drying, acoustically insulating, and permanently flexible. 'Bosman GOLD' foam is perfectly adhesive to most building materials (and super adhesive to PVC), except PE, silicone, PS, and teflon. The cured foam can be cut (already after 30-40 minutes), polished, plastered, and painted; however, it should be protected against direct sunlight. Thanks to its perfect expandability, it penetrates all pores and hollows, enabling complete sealing and insulation. It has many uses in the building industry, for example in building woodwork assembling, filling and insulating of cable bushings and pipe culverts, thermal insulation of water supply, sewerage and central heating systems, silencing and sealing of partition walls and car or boat cabs, and joining and sealing of prefabricated wooden elements during timber frame construction.



LOGISTIC INFORMATION

CAPACITY	PACKAGING TYPE	COLLECTIVE PACKAGING	QUANTITY ON A PALLET
750 ml	can	16 pcs	768 pcs

'BOSMAN SILVER' QUICK BONDING GUN FOAM, All seasons

PPB-PI-SILWE



INTENDED USE

'BOSMAN' SILVER PU foam is a one-component sealing and installation PU foam that undergoes curing under the influence of airborne moisture. Surface drying time: about 20 minutes; full curing time: about 18 hours. 'Bosman SILVER' foam is quick drying, quick bonding, suitable for all seasons, and perfectly adhesive to most building materials, except PE, silicone, and PS. The cured foam can be cut, polished, plastered, and painted; however, it should be protected against direct sunlight. It has many uses in the building industry, for example in building woodwork assembling, filling and insulating of cable bushings and pipe culverts, thermal insulation of water supply, sewerage and central heating systems, silencing and sealing of partition walls and car or boat cabs, and joining and sealing of prefabricated wooden elements during timber frame construction.



LOGISTIC INFORMATION

CAPACITY	PACKAGING TYPE	COLLECTIVE PACKAGING	QUANTITY ON A PALLET
750 ml	can	16 pcs	768 pcs





'BOSMAN LUX 80L' GUN FOAM, HYPER EFFICIENT, SUMMER, LOW-PRESSURE

PPB-PI-SW-840



INTENDED USE

'BOSMAN 80L LUX' PU foam is a one-component sealing and installation PU foam that undergoes curing under the influence of airborne moisture. Surface drying time: about 10-14 minutes; full curing time: about 6 hours. 'Bosman 80L LUX' foam is quick drying, quick bonding, suitable for all seasons, and perfectly adhesive to most building materials, except PE, silicone, and PS. The cured foam can be cut, polished, plastered, and painted; however, it should be protected against direct sunlight. It has many uses in the building industry, for example in building woodwork assembling, filling and insulating of cable bushings and pipe culverts, thermal insulation of water, sewerage and central heating systems, silencing and sealing of partition walls and car or boat cabs, and joining and sealing of prefabricated wooden elements during timber frame construction.



MEGA EFFICIENT UP TO 80L



LOGISTIC INFORMATION

CAPACITY	PACKAGING TYPE	COLLECTIVE PACKAGING	QUANTITY ON A PALLET
840 ml	can	16 pcs	768 pcs

'BOSMAN LUX' 2-in-1 GUN/TUBE FOAM, USE IN ANY WAY YOU LIKE

PPB-PI-RU-LUX-750



INTENDED USE

'Bosman Lux' 2-in-1 foam is an assembly PU foam for working in ambient temperatures starting from +5°C. It is characterized by high final output, dimensional stability in the course of time, very good thermal insulation, sound absorption and high watertightness. It perfectly adheres to metal, wood, PVC, concrete, plaster, glass and plastics. It is resistant to mildew and fungi formation. It ensures stability of installed elements. 'Bosman' foam is intended for installation of windows and doors. It is also used for insulating pipe and cable bushings, sealing walls, roofs, slab roofs and flooring, for silencing car and boat cabs, and for fillings in frame construction.



LOGISTIC INFORMATION

CAPACITY	PACKAGING TYPE	COLLECTIVE PACKAGING	QUANTITY ON A PALLET
750 ml	can	16 pcs	768 pcs

'BOSMAN B1' GUN FOAM, FIREPROOF

PPB-PI-OG-750



INTENDED USE

'Bosman B1' fireproof gun foam is a flash resistant ** (DIN 4102-B1) one-component sealing and installation PU foam for works that require use of non-flammable product meeting the specified non-flammability classes. 'Bosman' PU foam is intended for installing window and door frames and casings made of PVC, wood and aluminium, sealing roof joints, walls and ceilings, filling and insulating cable and pipe bushings, insulating central heating, water supply, and sewerage systems, silencing and sealing cabs, partition walls, automobile bodies, boats, etc. When fresh, the foam exhibits good adherence to all building materials. The cured foam is semi-rigid and the majority of it maintains the closed cell structure. The cured foam is resistant to high and low temperatures, but not to UV radiation.



LOGISTIC INFORMATION

CAPACITY	PACKAGING TYPE	COLLECTIVE PACKAGING	QUANTITY ON A PALLET
750 ml	can	16 pcs	768 pcs

'BOSMAN' TWO-COMPONENT FOAM /FOR CONSTRUCTION/

PPB-2K-400



INTENDED USE

Two-component construction foam: assembly, filling, and sealing of structures - where there is no sufficient moisture access and where fast mechanical processing of foam is required. Installation of indoor door woodwork. Filling of closed sections (boat building, refrigeration, silencing, and installation of paddling pools and bath tubs). Very short time of curing and treatment, low water absorption, chemically cured (do not moisten the substrate). It ensures rigidity of installed elements; very good thermal, sound, and moisture insulation. Good adherence to stone, concrete, plaster, gypsum, building ceramics, wood, steel, and PVC. Curing time: 10 minutes



ASSEMBLY IN 5 MINUTES AND DONE



LOGISTIC INFORMATION

CAPACITY	PACKAGING TYPE	COLLECTIVE PACKAGING	QUANTITY ON A PALLET
400 ml	can	12 pcs	840 pcs





FORMULA 1

**LOW-PRESSURE
PERMANENTLY FLEXIBLE
SUPER ADHESIVE**

FORMULA1 TUBE FOAM

PPF-750



SUMMER



INTENDED USE

The FORMULA 1 TUBE PU FOAM, SUMMER is a one-component installation and sealing polyurethane foam that undergoes curing as a result of reacting with moisture. Surface drying time: about 20 minutes; full curing time: about 12 hours.

FORMULA 1 foam is characterised by perfect adherence to the most building materials except PE, PP, rubber, Teflon surfaces, bitumen surfaces, etc. The completely cured foam can be machined: cut, polished, and, in addition, plastered and painted. Each time, it is necessary to protect (cover) it against harmful impact of UV radiation. It has many uses in the building industry, for example in door and window woodwork assembling, filling and insulating of cable bushings and pipe culverts, thermal insulation of water supply, sewerage and central heating systems, silencing and sealing of partition walls and car or boat cabs, and joining and sealing of prefabricated wooden elements during timber frame construction.



LOGISTIC INFORMATION

CAPACITY	PACKAGING TYPE	COLLECTIVE PACKAGING	QUANTITY ON A PALLET
750 ml	can	16 pcs	768 pcs

FORMULA1 TUBE FOAM

PPF-ZI-750



WINTER



INTENDED USE

The FORMULA 1 TUBE PU FOAM, WINTER is a one-component installation and sealing polyurethane foam that undergoes curing as a result of reacting with moisture. Surface drying time: about 20 minutes; full curing time: about 12 hours. FORMULA 1 foam is characterised by perfect adherence to the most building materials except PE, PP, rubber, Teflon surfaces, bitumen surfaces, etc. The cured foam can be machined: cut, polished, and, in addition, plastered and painted. Each time, it is necessary to protect (cover) it against harmful impact of UV radiation. It has many uses in the building industry, for example in door and window woodwork assembling, filling and insulating of cable bushings and pipe culverts, thermal insulation of water supply, sewerage and central heating systems, silencing and sealing of partition walls and car or boat cabs, and joining and sealing of prefabricated wooden elements during timber frame construction.



LOGISTIC INFORMATION

CAPACITY	PACKAGING TYPE	COLLECTIVE PACKAGING	QUANTITY ON A PALLET
750 ml	can	16 pcs	768 pcs

FORMULA 1 GUN FOAM LOW-PRESSURE

PPF-PI-750



SUMMER



INTENDED USE

The FORMULA 1 GUN PU FOAM, SUMMER is a one-component installation and sealing polyurethane foam that undergoes curing as a result of reacting with moisture. Surface drying time: about 20 minutes; full curing time: about 12 hours. FORMULA 1 foam is characterised by perfect adherence to the most building materials except PE, PP, rubber, Teflon surfaces, bitumen surfaces, etc. The completely cured foam can be machined: cut, polished, and, in addition, plastered and painted. Each time, it is necessary to protect (cover) it against harmful impact of UV radiation. It has many uses in the building industry, for example in door and window woodwork assembling, filling and insulating of cable bushings and pipe culverts, thermal insulation of water supply, sewerage and central heating systems, silencing and sealing of partition walls and car or boat cabs, and joining and sealing of prefabricated wooden elements during timber frame construction.



LOGISTIC INFORMATION

CAPACITY	PACKAGING TYPE	COLLECTIVE PACKAGING	QUANTITY ON A PALLET
750 ml	can	16 pcs	768 pcs



PU FOAMS

FORMULA1 GUN FOAM LOW-PRESSURE

PPF-PI-ZI-750



INTENDED USE

The FORMULA 1 GUN PU FOAM, WINTER is a one-component installation and sealing polyurethane foam that undergoes curing as a result of reacting with moisture. Surface drying time: about 20 minutes; full curing time: about 12 hours. FORMULA 1 foam is characterised by perfect adherence to the most building materials except PE, PP, rubber, Teflon surfaces, bitumen surfaces, etc. The cured foam can be machined: cut, polished, and, in addition, plastered and painted. Each time, it is necessary to protect (cover) it against harmful impact of UV radiation. It has many uses in the building industry, for example in door and window woodwork assembling, filling and insulating of cable bushings and pipe culverts, thermal insulation of water supply, sewerage and central heating systems, silencing and sealing of partition walls and car or boat cabs, and joining and sealing of prefabricated wooden elements during timber frame construction.



LOGISTIC INFORMATION

CAPACITY	PACKAGING TYPE	COLLECTIVE PACKAGING	QUANTITY ON A PALLET
750 ml	can	16 pcs	768 pcs

'OD A DO Z IZOFLEX' TUBE FOAM

PPO-IZ-RU-750



INTENDED USE

'Od A do Z IZOFLEX' TUBE SUMMER PU foam is an one-component sealing and installation PU foam that cures under the influence of airborne moisture. Surface drying time: about 20 minutes; full curing time: about 12 hours. 'Od A do Z' foam adheres perfectly the most building materials, except PE, silicone, and PS. The cured foam can be cut, polished, plastered, and painted; however, it should be protected against direct sunlight. It has many uses in the building industry, for example in building woodwork assembling, filling and insulating of cable bushings and pipe culverts, thermal insulation of water supply, sewerage and central heating systems, silencing and sealing of partition walls and car or boat cabs, and joining and sealing of prefabricated wooden elements during timber frame construction.



LOGISTIC INFORMATION

CAPACITY	PACKAGING TYPE	COLLECTIVE PACKAGING	QUANTITY ON A PALLET
700 ml	can	16 pcs	768 pcs

'OD A DO Z IZOFLEX' TUBE FOAM

PPO-RU-ZI-750



INTENDED USE

'Od A do Z IZOFLEX' TUBE WINTER PU foam is an one-component sealing and installation PU foam that cures under the influence of airborne moisture. Surface drying time: about 20 minutes; full curing time: about 12 hours. 'Od A do Z' foam adheres perfectly the most building materials, except PE, silicone, and PS. The cured foam can be cut, polished, plastered, and painted; however, it should be protected against direct sunlight. It has many uses in the building industry, for example in building woodwork assembling, filling and insulating of cable bushings and pipe culverts, thermal insulation of water supply, sewerage and central heating systems, silencing and sealing of partition walls and car or boat cabs, and joining and sealing of prefabricated wooden elements during timber frame construction.



LOGISTIC INFORMATION

CAPACITY	PACKAGING TYPE	COLLECTIVE PACKAGING	QUANTITY ON A PALLET
700 ml	can	16 pcs	768 pcs

'OD A DO Z IZOFLEX' GUN FOAM

PPO-IZ-PI-750



INTENDED USE

'Od A do Z IZOFLEX' SUMMER GUN PU foam is an one-component sealing and installation PU foam that undergoes curing under the influence of airborne moisture. Surface drying time: about 20 minutes; full drying time: about 12 hours. 'Od A do Z' foam adheres perfectly the most building materials, except PE, silicone, and PS. The cured foam can be cut, polished, plastered, and painted; however, it should be protected against direct sunlight. It has many uses in the building industry, for example in building woodwork assembling, filling and insulating of cable bushings and pipe culverts, thermal insulation of water supply, sewerage and central heating systems, silencing and sealing of partition walls and car or boat cabs, and joining and sealing of prefabricated wooden elements during timber frame construction.



LOGISTIC INFORMATION

CAPACITY	PACKAGING TYPE	COLLECTIVE PACKAGING	QUANTITY ON A PALLET
700 ml	can	16 pcs	768 pcs



BOSMAN[®]professional series
for everybody

PU FOAMS

silicones | foams | impregnants | adhesives

**'OD A DO Z IZOFLEX' GUN
FOAM**

PPO-PI-ZI-750

WINTER**INTENDED USE**

'Od A do Z IZOFLEX' WINTER PU GUN FOAM is a one-component sealing and installation PU foam that undergoes curing under the influence of airborne moisture. Surface drying time: about 20 minutes; full drying time: about 12 hours. 'Od A do Z' foam adheres perfectly to the most building materials, except PE, silicone, and PS. The cured foam can be cut, polished, plastered, and painted; however, it should be protected against direct sunlight. It has many uses in the building industry, for example in building woodwork assembling, filling and insulating of cable bushings and pipe culverts, thermal insulation of water supply, sewerage and central heating systems, silencing and sealing of partition walls and car or boat cabs, and joining and sealing of prefabricated wooden elements during timber frame construction.

**LOGISTIC INFORMATION**

CAPACITY	PACKAGING TYPE	COLLECTIVE PACKAGING	QUANTITY ON A PALLET
700 ml	can	16 pcs	768 pcs

**BUILDING
ADHESIVES
PIANOKLEJ****LOW-PRESSURE****HIGH THERMAL INSULATION CAPACITY****PIANOKLEJ****2 MINUTES
AND IT'S READY**

- **BONDING**
- **MOUNTING**
- **SEALING**



PRODUCT CATALOGUE



BUILDING ADHESIVES

'BOSMAN' FOAM ADHESIVE, ALL-PURPOSE

PPB-KLEJ-BOSMAN



GLUING / FIXING

-5°C to + 30°C



INTENDED USE

'BOSMAN' all-purpose foam adhesive is a one-component super quick and strong product characterised by extra quick initial hold, which significantly speeds up the progress of works. Does not expand, thanks to which it ensures stability of the elements bonded. Excellent adhesion to most building materials, such as hollow bricks, silicate blocks, brick walls, OSB, plasterboards, plasters, concrete, metal, EPS, and wood. Easy application. 'BOSMAN' all-purpose foam adhesive can be used for bonding OSB and plasterboards, EPS and XPS board, installing window sills and stairs, building partition walls and housings made of silicate, ceramic, or aerated concrete blocks, and bonding skirting boards and ceiling panels.



NATIONAL RATING TECHNICAL



1-2 minutes and DONE

LOGISTIC INFORMATION

CAPACITY	PACKAGING TYPE	COLLECTIVE PACKAGING	QUANTITY ON A PALLET
750 ml	can	16 pcs	768 pcs

BOSMAN UNIVERSAL FAST GLUE

PPB-KLEJ-750ML



BRICKLAYING/BONDING

-5°C to + 30°C



INTENDED USE

Bosman universal fast glue is a high-performance and quick-drying polyurethane adhesive for outdoor and indoor applications. It is designed for gluing / bricklaying: partition walls, partitions, cellular concrete screens, insulation of: shelters, halls, garages, gates, containers, etc., e.g. with the use of XPS and EPS polystyrene boards or graphite polystyrene. BOSMAN FAST UNIVERSAL ADHESIVE has very good adhesion to most building materials. Perfectly insulates acoustically and thermally. Creates a low-pressure foam that seals and fills the unevenness of the substrate. It can be plastered, painted and does not flow down from vertical surfaces.

NATIONAL RATING TECHNICAL



1-2 minutes and DONE

LOGISTIC INFORMATION

CAPACITY	PACKAGING TYPE	COLLECTIVE PACKAGING	QUANTITY ON A PALLET
750 ml	can	16 pcs	768 pcs

'BOSMAN' ADHESIVE FOR EPS

PPB-STYRO-750



+5°C to + 30°C

FIXING STYROFOAM



INTENDED USE

'BOSMAN' ADHESIVE FOR EPS foam is a one-component adhesive without solvents that undergoes curing under the influence of airborne moisture; used for fastening EPS boards; to be applied using a foam gun. Bonding EPS, EPX, and PUR boards and similar boards to concrete blocks, calcium silicates, aerated concrete, bricks, plasters (including hydroinsulating ones using bituminous compounds and solutions). In particular, thermal insulation of foundations, cellar walls and similar underground parts of buildings. Vertical expansion joints in masonry. Joint sealing, for example at window sills, sill tiles, balcony tiles, cellar windows, or windows in basement. This applies to both new and refurbished buildings.



LOGISTIC INFORMATION

CAPACITY	PACKAGING TYPE	COLLECTIVE PACKAGING	QUANTITY ON A PALLET
750 ml	can	16 pcs	768 pcs

'BOSMAN' ADHESIVE FOR EPS STRAW

PPB-ST-D-750



+5°C to + 30°C

FIXING STYROFOAM



INTENDED USE

'BOSMAN' ADHESIVE FOR EPS foam is a one-component adhesive without solvents that undergoes curing under the influence of airborne moisture; used for fastening EPS boards; to be applied using a foam gun. Bonding EPS, EPX, and PUR boards and similar boards to concrete blocks, calcium silicates, aerated concrete, bricks, plasters (including hydroinsulating ones using bituminous compounds and solutions). In particular, thermal insulation of foundations, cellar walls and similar underground parts of buildings. Vertical expansion joints in masonry. Joint sealing, for example at window sills, sill tiles, balcony tiles, cellar windows, or windows in basement. This applies to both new and refurbished buildings.



LOGISTIC INFORMATION

CAPACITY	PACKAGING TYPE	COLLECTIVE PACKAGING	QUANTITY ON A PALLET
750 ml	can	16 pcs	768 pcs



IZOFLEX GUN ADHESIVE-FOR EVERYONE

PPB-IZ-STYR-700



+5°C to +30°C

INTENDED USE

'BOSMAN' ADHESIVE FOR EPS foam is a one-component adhesive without solvents that undergoes curing under the influence of airborne moisture; used for fastening EPS boards; to be applied using a foam gun. Bonding EPS, EPX, and PUR boards and similar boards to concrete blocks, calcium silicates, aerated concrete, bricks, plasters (including hydroinsulating ones using bituminous compounds and solutions). In particular, thermal insulation of foundations, cellar walls and similar underground parts of buildings. Vertical expansion joints in masonry. Joint sealing, for example at window sills, sill tiles, balcony tiles, cellar windows, or windows in basement. This applies to both new and refurbished buildings.



DIY do it yourself



LOGISTIC INFORMATION

CAPACITY	PACKAGING TYPE	COLLECTIVE PACKAGING	QUANTITY ON A PALLET
700 ml	can	16 pcs	768 pcs

BOSMAN GLUE FOR MINERAL WOOL THERMAL MODERNIZATION

-5°C to +30°C

INTENDED USE

BOSMAN THERMAL INSULATION ADHESIVE is used, among others, for: for insulating facades; external and internal walls, attics, balconies, sheds, halls and garages. It is useful in construction works - gluing mineral wool boards to substrates such as: OSB boards, wood, brick, concrete, roofing felt, sheet metal, e.g. in insulation works. The product is also used to attach mineral wool boards to flat roof surfaces covered with sheet metal galvanized, steel sheet with polyester coating or roofing felt, when performing thermal insulation. BOSMAN THERMAL INSULATION GLUE shows excellent adhesion to substrates such as brick, concrete, OSB boards, wood, as well as to all types of white and graphite EPS boards or boards XPS and substrates made of sheet metal (galvanized, steel with a polyester coating) and felt, except polyethylene, polypropylene and Teflon.



INSULATION OF FACADES AND EXTERNAL WALLS



LOGISTIC INFORMATION

CAPACITY	PACKAGING TYPE	COLLECTIVE PACKAGING	QUANTITY ON A PALLET
750 ml	can	16 pcs	768 pcs

BOSMAN ROOFING GLUE THERMAL MODERNIZATION ROOF INSULATION - Styrofoam / Mineral wool

PPB-DEKAR-750



-5°C to +30°C

INTENDED USE

BOSMAN Polyurethane Styrofoam Quick Adhesive is a low-pressure, single-component polyurethane adhesive intended for fixing thermal insulation boards when performing thermal insulation of flat roofs. Quick polyurethane adhesive, Styrofoam BOSMAN is used to attach XPS, EPS (white) and graphite polystyrene boards to the surface of flat roofs covered with galvanized sheet, steel sheet with polyester coating or roofing felt, when performing thermal insulation, also in other construction works - gluing polystyrene to substrates such as OSB boards, wood, roofing felt, sheet metal, brick, concrete, e.g. in insulation works. Polyurethane adhesive has excellent adhesion to substrates such as concrete, brick, wood, OSB board as well as for all types of polystyrene and sheet metal substrates (galvanized, steel with polyester coating) and roofing felt.



FOR ROOFERS



LOGISTIC INFORMATION

CAPACITY	PACKAGING TYPE	COLLECTIVE PACKAGING	QUANTITY ON A PALLET
750 ml	can	16 pcs	768 pcs

BOSMAN GLUE MORTAR



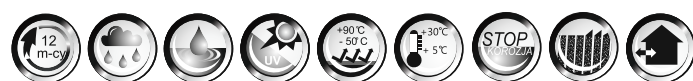
INTENDED USE

The Masonry Mortar Adhesive is intended for building: partition walls, partitions, aerated concrete screens, insulating: sheds, halls, garages, gates, containers, etc., e.g. using polystyrene boards made of XPS, EPS or graphite polystyrene. It is characterized by very good quality adhesion to most building materials. Perfectly insulates acoustically and thermally. Creates a low-pressure sealing foam and filling the unevenness of the ground. It can be plastered, painted and does not run off vertical surfaces.



LOGISTIC INFORMATION

CAPACITY	PACKAGING TYPE	COLLECTIVE PACKAGING	QUANTITY ON A PALLET
750 ml	can	16 pcs	768 pcs





BOSMAN BOARD ADHESIVE plasterboard and OSB

-5°C to +30°C



BONDING AND BRICKLAYING

INTENDED USE

Gypsum board adhesive is intended for gluing: OSB boards and plasterboards, EPS and XPS polystyrene boards. Easy overlapping. A fast and strong product with a quick initial grip, which significantly speeds up the work progress. It does not grow, which ensures the stability of the glued elements.

**NATIONAL
RATING
TECHNICAL**



LOGISTIC INFORMATION

CAPACITY	PACKAGING TYPE	COLLECTIVE PACKAGING	QUANTITY ON A PALLET
750 ml	can	16 pcs	768 pcs



'EASY' CONSTRUCTION ADHESIVE -for everyone



DIY do it yourself

INTENDED USE

'EASY' CONSTRUCTION ADHESIVE is a highly efficient and quick drying PU adhesive for outdoor and indoor application. It is intended for fixing window sills and steps, building partition walls, partitions, and aerated concrete screens, thermal insulation of sheds, halls, garages, and container gates, bonding plasterboards and fibre and cement boards using drywall technology, bonding wood-derivative decorative boards, polystyrene insulation boards and panels, phenolic foams (PUR, PIR, XPS, EPS, PF), mineral wool, and cork to brick, concrete, stone, wood, and metals (e.g. during thermal and acoustic insulation of garages, containers, etc.). It is characterised by very good adhesion to most building materials (also wet ones). Provides perfect thermal and acoustic insulation. Forms a low pressure sealing foam that can also be used for levelling uneven substrate. Can be painted and does not drip from vertical surfaces.

LOGISTIC INFORMATION

CAPACITY	PACKAGING TYPE	COLLECTIVE PACKAGING	QUANTITY ON A PALLET
750 ml	can	16 pcs	768 pcs



BOSMAN PRIMER-CONTACT GLUE IN SPRAY

KLB-PRIMER-500ML



INTENDED USE

PRIMER-Contact Adhesive is intended for vapor barrier and construction foils, roofing membranes, warm installation tapes - it is a multi-purpose product in a spray that perfectly glues concrete, brick, metal, stone, cork, foil, ceramics, wood, rubber, rigid plastic, glass, polyethylene, as well as upholstery sponges, mineral wool, cardboard or fabrics. It perfectly combines a very wide range of materials, so it is suitable for all renovation and construction work and assembly, also as an adhesive for vapor barrier foil. The great advantage of the glue is that when you apply the glue to one of the surfaces to be glued, you can still correct the element, tear it off and move it for approx. 10 minutes. The surface from which we removed the element at this time is still clean! There is little glue absorbent, which ensures that the glued materials do not get wet and are highly efficient. The spray adhesive creates a waterproof, strong and flexible joint. It is quick-drying. It has a long open time. Suitable for porous and non-porous surfaces. It is immediately ready for use (just shake can) and does not require any additional accessories. Application of the product to both glued surfaces results in a very durable bond. Modern applicator allows for very easy and professional adjustment of the glue stream, making our work comfortable in all conditions.



LOGISTIC INFORMATION

CAPACITY	PACKAGING TYPE	COLLECTIVE PACKAGING	QUANTITY ON A PALLET
500 ml	can	12 pcs	1008 pcs



BOSMAN FOAM 70 LOW PRESSURE /LOW EXPANDING



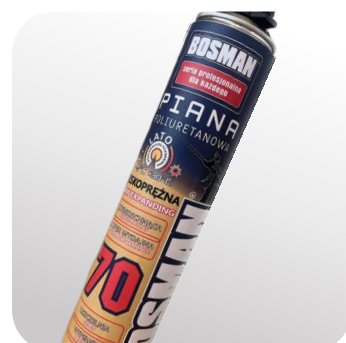
SUPER EFFICIENT

INTENDED USE

'Bosman LUX' 70 low pressure foam is a one-component sealing and installation PU foam that undergoes curing under the influence of airborne moisture. Surface drying time: 20 minutes; full curing time: 12 hours. 'Bosman Lux' foam is perfectly adhesive to most building materials, except PE, silicone, and PS. The cured foam can be cut, polished, plastered, and painted; however, it should be protected against direct sunlight. 'Bosman' foam is recommended especially for installation of doors and windows. Thanks to its perfect expandability, it penetrates all pores and hollows, enabling complete sealing and insulation. It has many uses in the building industry, for example in filling and insulating of cable bushings and pipe culverts, thermal insulation of water supply, sewerage and central heating systems, silencing and sealing of partition walls and car or boat cabs, and joining and sealing of prefabricated wooden elements during timber frame construction.

LOGISTIC INFORMATION

CAPACITY	PACKAGING TYPE	COLLECTIVE PACKAGING	QUANTITY ON A PALLET
880 ml	can	16 pcs	768 pcs



CLEANER - REMOVERS LUBRICANTS PENETRATING AGENTS PROTECTIVE FOAM GUNS



'BOSMAN' ALL-PURPOSE CLEANER

CZA-BOS-500



INTENDED USE

It is used for cleaning PU foam guns. It dissolves non-cured one-component and two-component PU foam and fresh non-cured PU adhesive.



LOGISTIC INFORMATION

CAPACITY	PACKAGING TYPE	COLLECTIVE PACKAGING	QUANTITY ON A PALLET
500 ml	can	12 pcs	1008 pcs

FOAM/GLUE CLEANER

CZA-ZMY-KLEJ-500



INTENDED USE

It is used for cleaning PU foam guns. It dissolves non-cured one-component and two-component PU foam and fresh non-cured PU adhesive.



LOGISTIC INFORMATION

CAPACITY	PACKAGING TYPE	COLLECTIVE PACKAGING	QUANTITY ON A PALLET
500 ml	can	12 pcs	1008 pcs

'BOSMAN' CURED FOAM REMOVER

CZ-REMOYE-340



INTENDED USE

The cured foam remover is used for cleaning tools and surfaces adjacent to the cured building foam. It is also used for cleaning window frames, window sills, doors, casings, etc. of the cured assembly foam. It can be also used for paint removal. Before using the remover, carry out a test using a small amount of it.



LOGISTIC INFORMATION

CAPACITY	PACKAGING TYPE	COLLECTIVE PACKAGING	QUANTITY ON A PALLET
340 ml	can	12 pcs	1008 pcs

PRODUCT CATALOGUE



PRESERVING AND CLEANING AGENTS

1200 szt.

BOSMAN CITRUS CLEANER

CZ-CYTRUSOWY-500



INTENDED USE

Super fast product for removing self-adhesive labels, stickers as well as residues of glue, oil, stickers, grease, asphalt, tar and waterproof markers. Great for removing double-sided tapes, side moldings in cars, rim balancing weights, or registration stickers. Even the most problematic dirt is removed by our product, even though it does not contain any substances corrosive. This is due to the product's recipe, which contains strongly citrus oil solvents that not only effectively clean, but also they leave a pleasant, citrus scent. Can be used on metal, laminate, glass, ceramics, painted surfaces, wood and rubber. In front of everyone Before using the product, test it in an inconspicuous place. Do not use on plexiglass.



LOGISTIC INFORMATION

CAPACITY	PACKAGING TYPE	COLLECTIVE PACKAGING	QUANTITY ON A PALLET
500 ml	can	12 pcs	1008 pcs

PENETRATOR X-100 PENETRATING AGENT

(PRESERVES, PREVENTS CORROSION, CLEANS, LUBRICATES, AND DISPLACES WATER)

CZ-PENETRATOR



PROPERTIES

Perfect and unique all-purpose agent for using both at home and in the industry (e.g. lubrication of hinges and locks; extension of machinery lifetime). It is essential that it does not contain silicone and therefore it does not attract dirt and dust. It protects devices and machines perfectly against corrosion while leaving a protective film on metal surfaces; it also prevents formation of new corrosion foci. It displaces water from ignition systems, thanks to which an engine can be started easily even in the most adverse weather conditions. Using the preparation on locks results in removal of dirt and dust and also in immediate elimination of unpleasant squeaks and rasps. Thanks to its low viscosity, our product will facilitate unscrewing of even the most severely seized screws. It has the properties of a lubricating oil, and therefore it is not necessary to remove it before operating precision devices. It does not cause jamming of co-acting parts or thin products becoming stuck together.

INTENDED USE

It lubricates and penetrates valves, padlocks, shutters, weapons, bicycles, sewing machines, swivel chairs, locks, and hinges (e.g. in doors and furniture), while eliminating unpleasant squeaks and rasps. It also removes impurities present inside locks, for example. It loosens seized screws, nuts, etc. It protects perfectly against corrosion (e.g. machines for textile industry, precision measuring instruments, small electric motors, and injection pumps), creating a protective film on metal surfaces to extend the lifetime of devices and machines. It displaces water perfectly from metal surfaces, tools (including garden tools), and all kinds of ignition systems (spark and electronic systems). It also facilitates engine starting. It removes minor soiling (from glue, rubber, grease, or scale, e.g. from bathroom fixtures). In case of non-standard application, it is necessary to carry out a test.



LOGISTIC INFORMATION

CAPACITY	PACKAGING TYPE	COLLECTIVE PACKAGING	QUANTITY ON A PALLET
500 ml	can	12 pcs	1008 pcs

SILICONE OIL

(PRESERVES, LUBRICATES, PROTECTS)

SIB-OLEJ-500



INTENDED USE

The oil is intended for lubrication of moving elements, e.g. hinges, ferrules, locks, roller blinds, drawer guides, and seats in order to eliminate rasps and squeaks and to ensure efficient and failure-free operation. It protects rubber gaskets and similar elements against crushing, fading and sticking under the influence of insolation or low temperatures.



LOGISTIC INFORMATION

CAPACITY	PACKAGING TYPE	COLLECTIVE PACKAGING	QUANTITY ON A PALLET
4000 ml	can	12 pcs	1008 pcs

INDUSTRIAL CLEANER DEGREASE

ZMYWACZ-BOSMAN-500ML



INTENDED USE

BOSMAN Industrial Remover-Degreaser is a multifunctional cleaning and degreasing agent for use on metal surfaces, glass, stone, ceramics and other chemically resistant materials. Evaporates instantly. Contains ketone solvents that quickly dissolve and remove deposits, grease, grease and other workshop dirt.



LOGISTIC INFORMATION

CAPACITY	PACKAGING TYPE	COLLECTIVE PACKAGING	QUANTITY ON A PALLET
500 ml	can	12 pcs	1008 pcs



BOSMAN PROFESSIONAL FOAM GUN

OSP-PROFES



INTENDED USE

The gun is used for application (foaming) of PU foams and laying foam between a door or window frame and a wall.

LOGISTIC INFORMATION

COLLECTIVE PACKAGING	QUANTITY ON A PALLET
1 pcs	480 pcs

STANDARD FOAM GUN FOR EVERYBODY

OSP-UNINBS



INTENDED USE

The gun is used for application (foaming) of PU foams and laying foam between a door or window frame and a wall.

LOGISTIC INFORMATION

COLLECTIVE PACKAGING	QUANTITY ON A PALLET
1 pcs	480 pcs

IMPREGNANTS CONSTRUCTION AND COLOURING

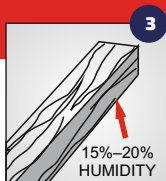
HOW TO IMPREGNATE WOOD?



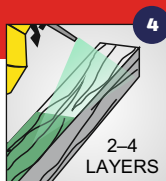
1
In view of formation of deposits on the bottom of packaging, the agent should be mixed thoroughly prior to use and the packaging should be flushed with water.



2
The structural timber should be healthy, without infiltrations, and debarked.



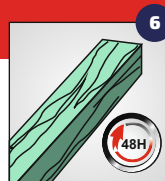
3
The timber has to be dry, with 15%-20% humidity.



4
The impregnant can be applied by spraying. It is necessary to remember to wear protective clothing. When applying the agent, it is necessary to ventilate the room during work and after completing it - until the smell disappears.



5
It can also be applied by means of a brush or roller. The number of layers should be adjusted to the wood parameters, its structure, and its absorption capacity.



6
After 48h of drying, the timber is fit for outdoor use.



NATIONAL TECHNICAL ASSESSMENT
ITB-KOT-2021/1759 edition 1



Instytut Techniki Budowlanej

DEEP PENETRATION
WORKS AGAINST FUNGI AND MILDEW
IMMUNE TO WASHING OUT
PERMANENT COLOUR



PRODUCT CATALOGUE



CONSTRUCTION IMPREGNANTS

IMPREGNAT DO DREWNA BUDOWLANO-KONSTRUKCYJNEGO BOSMAN KONCENTRAT 1:6 1:9 / I, II klasa zabezpieczenia/

IM-DR-BO-...



PROPERTIES

Liquid product.

INTENDED USE

'Bosman' - Impregnant for building and structural timber - is a wood preserving agent (1st & 2nd class of protection against biological corrosion) for indoor use; it protects rafter framing, wooden structures, etc. against household fungi and mildew.

NATIONAL TECHNICAL ASSESSMENT ITB-KOT-2021/1759 edition 1



CONCENTRATE 1:6 - 1:9
With 5kg - productivity 175 m²

LOGISTIC INFORMATION

COLOUR	CAPACITY	PACKAGING TYPE	COLLECTIVE PACKAGING	QUANTITY ON A PALLET
<input type="checkbox"/> colourless				
<input type="checkbox"/> green				
<input type="checkbox"/> brown				
	1 kg	bottle (PE)	15 pcs	540 pcs
	5 kg	canister (PE)	1 pcs	80 pcs
	10 kg	canister (PE)	1 pcs	60 pcs
	200 kg	barrel	1 pcs	

'BOSMAN' IMPREGNANT FOR BUILDING AND STRUCTURAL TIMBER

READY TO USE /1st & 2nd protection class/

IM-...



PROPERTIES

Liquid product.

INTENDED USE

'Bosman' - Impregnant for building and structural timber - ready to use - is a wood preserving agent (1st & 2nd class of protection against biological corrosion) for indoor use; it protects rafter framing, wooden structures, etc. against household fungi and mildew.

NATIONAL TECHNICAL ASSESSMENT ITB-KOT-2021/1759 edition 1



READY TO USE

LOGISTIC INFORMATION

COLOUR	CAPACITY	PACKAGING TYPE	COLLECTIVE PACKAGING	QUANTITY ON A PALLET
<input type="checkbox"/> colourless				
<input type="checkbox"/> green				
<input type="checkbox"/> brown				
	1 kg	bottle (PE)	15 pcs	540 pcs
	5 kg	canister (PE)	1 pcs	80 pcs
	10 kg	canister (PE)	1 pcs	60 pcs
	200 kg	barrel	1 pcs	

'IMPREGNACJA OD A DO Z' IMPREGNANT FOR BUILDING AND GARDEN TIMBER

1:9 CONCENTRATE /protection class I, II &

IM-...



PROPERTIES

Liquid product.

INTENDED USE

'Impregnacja OD A DO Z' impregnant for building and garden timber is an agent, immune to washing out, intended for impregnating wood with hazard class I, II against fungi causing deep decomposition of wood and against insects - wood-threatening pests. It is suitable for indoor and outdoor use, both for sheltered wood and wood exposed to washing out.

NATIONAL TECHNICAL ASSESSMENT ITB-KOT-2021/1759 edition 1



CONCENTRATE 1:9

LOGISTIC INFORMATION

COLOUR	CAPACITY	PACKAGING TYPE	COLLECTIVE PACKAGING	QUANTITY ON A PALLET
<input type="checkbox"/> colourless				
<input type="checkbox"/> green				
	5 kg	canister (PE)	1 pcs	80 pcs

WOOD IMPREGNATION FOR SAWMILLS CONCENTRATE 1:19 / II class of protection/

IM-BO-BUDO-...



PROPERTIES

Liquid product.

INTENDED USE

'Impregnacja OD A DO Z' impregnant for structural timber - ready to use - is intended for preserving wood exposed indoors and outdoors against biological corrosion caused by household fungi in use class I, II. For preservation and protection of raw building timber (frame structures, rafter framing, ceiling structures, lawn furniture, pergolas).

NATIONAL TECHNICAL ASSESSMENT ITB-KOT-2021/1759 edition 1



CONCENTRATE 1:19
FOR PROFESSIONAL USE

LOGISTIC INFORMATION

COLOUR	CAPACITY	PACKAGING TYPE	COLLECTIVE PACKAGING	QUANTITY ON A PALLET
<input type="checkbox"/> colourless				
<input type="checkbox"/> green				
<input type="checkbox"/> brown				
	10 kg	canister (PE)	1 pcs	60 pcs
	200 kg	barrel	1 pcs	
	1000 kg	IBC	1 pcs	



FIRESTOP - 4-PURPOSE FIREPROOF TIMBER IMPREGNANT

IM-DR-PP-B-50



INTENDED USE

Protecting building timber installed in areas where washing out is impossible against fire, against Basidiomycetes (wood-decomposing fungi), and against insects - wood-threatening pests (except termites). The impregnated wood must be used within use class I and II, indoors or outdoors, under shelter, and fully protected against impact of weather conditions. Product for industrial and professional use.



LOGISTIC INFORMATION

COLOUR	CAPACITY	PACKAGING TYPE	COLLECTIVE PACKAGING	QUANTITY ON A PALLET
red	5 kg	bucket	1 pcs	108 pcs



COLOURING IMPREGNANTS



PROTECTS AGAINST CORROSION
DEEP PENETRATION
WORKS AGAINST FUNGI AND MILDEW
DECORATIVE EFFECT
PERMANENT COLOUR



'OD A DO Z FLEX' SOLVENT-BASED COLOURING IMPREGNANT FOR TIMBER

FL-RO...



PROPERTIES

Form - liquid with colour according to the specifications (colours + colourless). Density - 0.82 g/cm³

INTENDED USE

For decorative wood impregnation indoors and outdoors; it dyes wood permanently. It is recommended for finishing wooden elements, i.e.: facades, pillars, beams, balustrades, window shutters, doors, lawn furniture, fences, pergolas, and summerhouses. Retains visible structure of wood. Provides protection against biocorrosion. Weatherproof. Its advantage consists in deep penetration, thanks to which it has an improved effect on cracked wood. Intended for general and professional use.



LOGISTIC INFORMATION

COLOUR	CAPACITY	PACKAGING TYPE	COLLECTIVE PACKAGING	QUANTITY ON A PALLET
	1 L	can	6 pcs	528 pcs
	5 L	can	2 pcs	100 pcs
	10 L	can	1 pcs	33 pcs





COLOURING IMPREGNANTS

'OD A DO Z FLEX' SOLVENT-BASED COLOURING VARNISH FOR WOOD

FL-BEJ-...-070



PROPERTIES

Form - liquid with colour according to the specifications (colours + colourless). Density - 0.88 g/cm³

INTENDED USE

For decorative wood impregnation indoors and outdoors; it provides wood with permanent colouring and gloss. It is recommended for finishing wooden elements, i.e.: facades, pillars, beams, balustrades, window shutters, doors, and lawn furniture. Retains visible structure of wood. Provides protection against biocorrosion. Coating resistant to impact of atmospheric conditions.



LOGISTIC INFORMATION

COLOUR	CAPACITY	PACKAGING TYPE	COLLECTIVE PACKAGING	QUANTITY ON A PALLET
	0,7 L	can	6 pcs	528 pcs

'OD A DO Z FLEX' AZURE ACRYL FOR WOOD DECORATION

FL-AK-...



PROPERTIES

Form - liquid. Density - 1.03 g/cm³

INTENDED USE

For decorative indoor and outdoor wood painting. It is recommended for finishing wooden elements (facades, pillars, beams, balustrades, window shutters, doors) and also for garden furniture (fences, pergolas, summerhouses, lawn furniture). Retains visible structure of wood. Weatherproof.



LOGISTIC INFORMATION

COLOUR	CAPACITY	PACKAGING TYPE	COLLECTIVE PACKAGING	QUANTITY ON A PALLET
	1 L	can	6 pcs	528 pcs
	5 L	can	2 pcs	100 pcs
	10 L	can	1 pcs	33 pcs

'OD A DO Z FLEX' ACRYLIC VARNISH FOR WOOD COLOURING

FL-AK-BE-...-7



PROPERTIES

Form - liquid. Density - 1.04 g/cm³

INTENDED USE

For decorative indoor and outdoor wood impregnation. Provides wood with permanent colour and semi-matt effect. Improved protection against fungi and insects. It is recommended for finishing wooden elements (facades, pillars, beams, balustrades, window shutters, and doors). Retains visible structure of wood. Weatherproof.



LOGISTIC INFORMATION

COLOUR	CAPACITY	PACKAGING TYPE	COLLECTIVE PACKAGING	QUANTITY ON A PALLET
	0,7 L	can	6 pcs	528 pcs

COLOURING WOOD STAIN COLOURING PASTE, CONCENTRATE 1:1000

COLOURING PASTE



PROPERTIES

Basic dyes are characterised by very good colouring efficiency and result in intensive dyeing, where the dyeing power increases together with increased content of lignin substances in fibres, as these substances perform the role of a natural mordant. The product does not drip and is absorbed well by wood.

INTENDED USE

The basic dyes are designed mainly for dyeing wood, groundwood, waste paper, and fibreboards. There are no limitations for using the dye.



LOGISTIC INFORMATION

COLOUR	CAPACITY	PACKAGING TYPE	COLLECTIVE PACKAGING	QUANTITY ON A PALLET
	1 L	canister (PE)	1 pcs	180 pcs



BUILDING AND REPAIRING IS EASIER WITH OUR PRODUCTS

PRIMER EMULSIONS, FINISHERS, PAINTS, SPRAY PAINTS



**DEEP PENETRATION
IMMUNE TO WASHING OUT**

'BOSMAN' ACRYLIC PRIMER 1:1

FM-BOSMAN-...



PROPERTIES

It penetrates brittle and weak substrates quickly. It protects against moisture and reduces absorbability. It improves adherence of paints, plasters and fillers. It creates an impermeable coat.

INTENDED USE

The acrylic primer emulsion is used for priming substrates made of concrete, cement, gypsum, etc. It penetrates the primed substrate deeply, strengthening it and protecting it against moisture. Applying the acrylic primer emulsion under paints, adhesives and self-levelling compounds allows reduction of consumption of these materials. The emulsion makes the primed substrate non-absorbent. It is perfect for floor heating systems. The preparation can be applied indoors and outdoors.

EFFICIENCY



LOGISTIC INFORMATION

COLOUR	CAPACITY	PACKAGING TYPE	COLLECTIVE PACKAGING	QUANTITY ON A PALLET
<input type="checkbox"/> white	1 L	bottle (PE)	15 pcs.	540 pcs.
	5 L	canister (PE)	1 pc.	108 pcs.
	10 L	canister (PE)	1 pc.	60 pcs.

'BOSMAN' ACRYLIC PRIMER CONCENTRATE 1:9

FM-GR-BOS-...



PROPERTIES

It penetrates brittle and weak substrates quickly. It protects against moisture and reduces absorbability. It improves adherence of paints, plasters and fillers. It creates an impermeable coat.

INTENDED USE

The ACRYLIC PRIMER emulsion - concentrate - is used for priming substrates made of concrete, cement, gypsum, etc. It penetrates the primed substrate deeply, strengthening it and protecting against moisture. Applying the ACRYLIC PRIMER emulsion under paints, adhesives and self-levelling compounds allows reduction of consumption of these materials. The emulsion makes the primed substrate non-absorbent. It is perfect for floor heating systems. The preparation can be applied indoors and outdoors.



LOGISTIC INFORMATION

COLOUR	CAPACITY	PACKAGING TYPE	COLLECTIVE PACKAGING	QUANTITY ON A PALLET
<input type="checkbox"/> white	1 L	bucket	12 pcs.	480 pcs.
	5 L	bucket	1 pc.	108 pcs.





PRIMERS

ACRYLIC PRIMER PRIMING EMULSION READY TO USE

FM-GR-...



READY TO USE



STANDARD

PROPERTIES

It penetrates brittle and weak substrates quickly. It protects against moisture and reduces absorbability. It improves adherence of paints, plasters and fillers. It creates an impermeable coat.

INTENDED USE

The acrylic primer emulsion - ready to use - is used for priming substrates made of concrete, cement, gypsum, etc. It penetrates the primed substrate deeply, strengthening it and protecting it against moisture. Applying the priming emulsion under paints, adhesives and self-levelling compounds allows reduction of consumption of these materials. The emulsion makes the primed substrate non-absorbent. It is perfect for floor heating systems. The preparation can be applied indoors and outdoors.



LOGISTIC INFORMATION

COLOUR	CAPACITY	PACKAGING TYPE	COLLECTIVE PACKAGING	QUANTITY ON A PALLET
<input type="checkbox"/> white				
	5 L	canister (PE)	1 pc.	108 pcs
	10 L	canister (PE)	1 pc.	60 pcs

ANTIFUNGAL 2-in-1 ACRYLIC PRIMER

FM-GR-PG-500



READY TO USE

for the bathroom and kitchen



PROFESSIONAL

PROPERTIES

It penetrates brittle and weak substrates quickly. It protects against moisture and prevents emergence of an environment favourable for fungi development. It reduces absorbency. It improves adherence of paints, plasters and fillers. It creates an impermeable coat.

INTENDED USE

The antifungal ACRYL PRIMER 2-in-1 emulsion is used for priming substrates made of concrete, cement, gypsum, etc. It penetrates the substrate primed, strengthening it and protecting it against moisture and preventing the growth of fungi. In case of existing mildew on the wall, it is essential that it is removed using special preparations, e.g.: 'BOSMAN' ANIFUNGAL preparation; then, after 24 hours, the priming emulsion should be used. It is also essential to remove the cause of mildew appearance: soggy and/or poor ventilation. Otherwise, the effect of the emulsion will be short-lived. Applying the ACRYLIC PRIMER emulsion under paints, adhesives and self-levelling compounds allows reduction of consumption of these materials. The emulsion makes the primed substrate non-absorbent. The preparation can be applied indoors and outdoors.



LOGISTIC INFORMATION

COLOUR	CAPACITY	PACKAGING TYPE	COLLECTIVE PACKAGING	QUANTITY ON A PALLET
<input type="checkbox"/> white				
	5 L	canister (PE)	1 pc.	108 pcs

'BOSMAN' ACRYLIC PRIMER FOR PLASTERBOARDS

FM-GR-KG-500



READY TO USE



PROFESSIONAL

PROPERTIES

It penetrates brittle and weak substrates quickly. It protects against moisture and reduces absorbency. It improves adherence of paints, plasters and fillers. It creates an impermeable coat.

INTENDED USE

The acrylic primer emulsion is used for priming plasterboards and other gypsum substrates (e.g. partitions walls, drywalls). It penetrates the substrate primed, strengthening it and protecting it against moisture. Applying the ACRYLIC PRIMER emulsion for plasterboards under paints, adhesives and self-levelling compounds allows reduction of consumption of these materials. The emulsion makes the primed substrate non-absorbent. The preparation can be applied indoors and outdoors.



LOGISTIC INFORMATION

COLOUR	CAPACITY	PACKAGING TYPE	COLLECTIVE PACKAGING	QUANTITY ON A PALLET
<input type="checkbox"/> white				
	5 L	canister (PE)	1 pc.	108 pcs

QUARTZ PRIMER FOR TILE-TO-TILE NO-CHISEL BONDING

FM-BOS-KWAR-...



PROPERTIES

'BOSMAN' QUARTZ BONDING PRIMER is a priming preparation with high adherence, ready to use. It is manufactured on the basis of a mix of synthetic resin dispersions characterised by high resistance to alkaline agents with silica sand and modifying admixtures. Thanks to the silica sand content, after applying the preparation it is possible to obtain properly rough surface facilitating correct application and increasing adhesion of subsequent material layers to the substrate.

INTENDED USE

'BOSMAN' QUARTZ BONDING PRIMER is an all-purpose priming preparation with high adherence to substrates of all kinds; it is particularly recommended in case of smoothly boarded concrete and reinforced concrete elements with high density and very low absorbency. It can also be used on cement and lime plaster, cement plaster, gypsum plasters, and gypsum and lime plasters, and also on plasterboards. The product is used for proper preparation of substrate prior to execution of plasters, gypsum finishes, cement plasters, levelling layers, and thin-layer decorative plasters, and also prior to use of gypsum adhesives and bonding mortars. In view of its very good adherence, 'BOSMAN' QUARTZ BONDING PRIMER is recommended for ceilings



LOGISTIC INFORMATION

COLOUR	CAPACITY	PACKAGING TYPE	COLLECTIVE PACKAGING	QUANTITY ON A PALLET
<input type="checkbox"/> white				
	5 kg	bucket	1 pc.	108 pcs
	10 kg	bucket	1 pc.	55 pcs



ALL-PURPOSE SUPER-BONDING PRIMER, READY TO USE FOR HARD AND SMOOTH SURFACES

FM-GR-SZCZ-50



PROPERTIES

'BOSMAN' BONDING PRIMER is bonding and insulating base primer for indoor and outdoor use. This preparation is used for improving adherence and eliminating absorbability of medium-absorbent substrates such as: concrete, cement, gypsum, plasterboard, cement plaster, and cement and lime substrates. Bonding primer can be applied under plasters, screeds, wallpapers, self-levelling flooring, ceramic tiles, acrylic and mineral plasters, fillers, and adhesives. In renovations, it is applied as the intermediate layer onto phthalate coatings that later have to be levelled or painted with water-based paints. It effectively improves the adherence of subsequent layer (compound or paint).



READY TO USE

LOGISTIC INFORMATION

COLOUR	CAPACITY	PACKAGING TYPE	COLLECTIVE PACKAGING	QUANTITY ON A PALLET
<input type="checkbox"/> white	5 L	canister (PE)	1 pc.	120 pcs.

GRUNT ŻELOWY BOSMAN

FM-BOSMAN-...



NO DRIP!! DON'T SPLASH!!



PROPERTIES

It penetrates brittle and weak substrates quickly. It protects against moisture and reduces absorbability. It improves adherence of paints, plasters and fillers. It creates an impermeable coat.

INTENDED USE

The acrylic primer emulsion is used for priming substrates made of concrete, cement, gypsum, etc. It penetrates the primed substrate deeply, strengthening it and protecting it against moisture. Applying the acrylic primer emulsion under paints, adhesives and self-levelling compounds allows reduction of consumption of these materials. The emulsion makes the primed substrate non-absorbent. It is perfect for floor heating systems. The preparation can be applied indoors and outdoors.

EFFICIENCY



LOGISTIC INFORMATION

COLOUR	CAPACITY	PACKAGING TYPE	COLLECTIVE PACKAGING	QUANTITY ON A PALLET
<input type="checkbox"/> white	1 L	bottle (PE)	15 pcs.	540 pcs.
	5 L	canister (PE)	1 pc.	108 pcs.
	10 L	canister (PE)	1 pc.	60 pcs.

Perfectly SMOOTH walls



FINISHING COATS, PAINTS

FILLS
SMOOTHENS
LEVELS
PERFECT COVERAGE

'BOSMAN EXTRA GRUNT PUTZ' PRIMING BASE FOR PLASTERS

FM-BOS-GRO-70



PROPERTIES

The 'Bosman' priming base for plasters is a plastering compound made on the basis of acrylic dispersion with addition of high quality fillers and chemical agents. It has very good plastic properties; it adjusts substrate absorbency, facilitates plaster application and increases the efficiency of its application. It protects a substrate, increases adherence and prevent impurities from adhesive mortars from penetration to the external plaster where they could cause appearance of stains on the surface.

INTENDED USE

'Bosman' base primer for use under plasters is a professional plastering compound used for preparing surfaces before application of 'KORNIK'/BARANEK' thin-layer acrylic-silicone plasters. It is intended for indoor and outdoor application onto all kinds of substrates: cement, cement and lime, gypsum, plasterboard, etc. It is excellent for using under mineral, acrylic, mosaic, gypsum, and other plasters.



EXCELLENT
QUALITY TO
PRICE RATIO!



LOGISTIC INFORMATION

COLOUR	CAPACITY	PACKAGING TYPE	COLLECTIVE PACKAGING	QUANTITY ON A PALLET
<input type="checkbox"/> white	3 kg	bucket (PE)	1 pc.	144 pcs
	7 kg	bucket (PE)	1 pc.	72 pcs
	15 kg	bucket (PE)	1 pc.	44 pcs





'BOSMAN EXTRA PUTZ' FILLING AND REPAIR COMPOUND



PROPERTIES

Effective removal of cracks in ceilings, walls, and plasters.

INTENDED USE

'BOSMAN EXTRA PUTZ' is a waterproof ready to use repair compound containing an admixture of specialist fibres. It is used in renovations of walls and ceilings and mudding of small gaps, holes and cracks inside buildings. Thanks to application of specialist fibres, its flexibility is very high - it is excellent for joining plasterboards. Its permanent elasticity enables adjusting to the so-called active substrate cracks without formation of additional contraction scratches. Suitable substrates for the repair compound include ceilings, indoor walls, and the following substrate types: plasterboards, gypsum or cement plasters, all kinds of plaster substrates, fibreboard surfaces, aerated concrete, blocks, hollow bricks, Pro-Monta boards, H + h, etc.



LOGISTIC INFORMATION

COLOUR	CAPACITY	PACKAGING TYPE	COLLECTIVE PACKAGING	QUANTITY ON A PALLET
<input type="checkbox"/> white				
	1,5 kg	bucket (PE)	1 pc.	320 pcs
	5 kg	bucket (PE)	1 pc.	100 pcs
	20 kg	bucket (PE)	1 pc.	33 pcs

'BOSMAN' FINISHING PUTTY

GLADZ-SZP-...



PROPERTIES

The ready to use finishing putty is a breathing and water-vapour-permeable coating created on the basis of finely ground minerals. It is plastic and perfectly white after it dries, thanks to which it is enough to cover it once with a layer of paint. Applying the compound is easy (using a long float or a stainless steel putty knife); it requires no special skills.

INTENDED USE

The ready to use finishing putty can be used inside residential and utility rooms. It is used for smoothening the surface of walls on ceiling on a high quality plaster finishing putty. It enables obtaining high smoothness of the finish. Using the putty is recommended prior to painting or wallpapering of new, renovated, and repaired surfaces.



LOGISTIC INFORMATION

COLOUR	CAPACITY	PACKAGING TYPE	COLLECTIVE PACKAGING	QUANTITY ON A PALLET
<input type="checkbox"/> white				
	1,5 kg	bucket (PE)	20 pcs	320 pcs
	5 kg	bucket (PE)	1 pc.	100 pcs
	20 kg	bucket (PE)	1 pc.	33 pcs



EXCELLENT PRICE

'GOLD BOSMAN EXTRA PUTZ' POLYMER AND GEL FINISHING COAT

GLADZ-GOLD-20



PROPERTIES

GOLD BOSMAN EXTRA PUTZ is a new innovative polymer and gel finishing compound, ready to use, having many utilisation and application characteristics that were previously not available on both Polish and European market. This finishing putty in the form of a gel paste is characterised by high thixotropy (plastification of the compound under the pressure of construction tools while maintaining low plasticity in free condition, under own load) that enables retaining the desired resistance to dripping from vertical surfaces with simultaneous facilitated spreading of the compound, evening out its structure, and, above all, final perfectly smooth finishing of wall surfaces.



LOGISTIC INFORMATION

COLOUR	CAPACITY	PACKAGING TYPE	COLLECTIVE PACKAGING	QUANTITY ON A PALLET
<input type="checkbox"/> white				
	20 kg	bucket (PE)	1 pc.	33 pcs



'BOSMAN DE LUX' ACRYLIC PAINT

FM-BOS-DE-...



INTENDED USE

'Bosman De Luxe' environmentally friendly acrylic paint is made on the basis of cutting-edge ingredients. The product is environmentally sound and its specially selected ingredients provide the pain with increased resistance to abrasion. The DE LUXE paint contains no solvents that could affect the environment negatively; thanks to this, we can recommend this product for a wide range of applications without any hesitation. The areas painted with this paint are characterized by matt snow white colour, and the improved coverage results in a cost effective paint application. The product is intended for painting walls and ceilings indoors.



LOGISTIC INFORMATION

COLOUR	CAPACITY	PACKAGING TYPE	COLLECTIVE PACKAGING	QUANTITY ON A PALLET
<input type="checkbox"/> white				
	5 L	bucket (PE)	1 pc.	72 pcs
	10 L	bucket (PE)	1 pc.	44 pcs



'BOSMAN STANDARD' EMULSION PAINT

FM-BOS-ST-...



INTENDED USE

'Bosman STANDARD' environmentally friendly emulsion paint is made on the basis of cutting-edge ingredients. The product is environmentally sound and its specially selected ingredients provide the paint with increased resistance to abrasion. The STANDARD paint contains no solvents that could affect the environment negatively; thanks to this, we can recommend this product for a wide range of applications without any hesitation. The areas painted with this paint are characterized by matt snow white colour, and the improved coverage results in a cost effective paint application. The product is intended for painting walls and ceilings indoors.



LOGISTIC INFORMATION

COLOUR	CAPACITY	PACKAGING TYPE	COLLECTIVE PACKAGING	QUANTITY ON A PALLET
<input type="checkbox"/> white	5 L	bucket (PE)	1 pc.	72 pcs
	10 L	bucket (PE)	1 pc.	44 pcs

'REZYDENCJA' FACADE PAINT

FM-REZ-BI-...



INTENDED USE

'REZYDENCJA' is an emulsion paint intended for painting the outside of residential and public utility buildings. Its resistance to weather makes it suitable for outdoor use in painting buildings and facades.

The 'Rezydencja' paint is characterized by the following:

- very strong coverage - "condensed" paint formula
- coat durability and resistant to atmospheric conditions
- suitability for use on outdoor surfaces (facades, balconies)
- resistance to washing and even scouring
- any soiling can be removed without worrying about damage to the paint coat.
- good water vapour permeability makes the walls "breathe"



LOGISTIC INFORMATION

COLOUR	CAPACITY	PACKAGING TYPE	COLLECTIVE PACKAGING	QUANTITY ON A PALLET
<input type="checkbox"/> white	5 L	bucket (PE)	1 pc.	72 pcs
	10 L	bucket (PE)	1 pc.	44 pcs

SILICONE SILVER COATING

FE-SR-SI-020



PROPERTIES

- metallic gloss
- high adhesion to steel

INTENDED USE

It is used for securing steel structures, pipelines, and other metal elements exposed to constant impact of temperature up to 450 °C.



LOGISTIC INFORMATION

COLOUR	CAPACITY	PACKAGING TYPE	COLLECTIVE PACKAGING	QUANTITY ON A PALLET
<input type="checkbox"/> silver	0,2 L	jar	18 pcs	

'BOSMAN PROFESSIONAL' SPRAY PAINT

PLYN-SPR-400



PROPERTIES

'BOSMAN professional' spray paint is an all-purpose, quick-drying, high-gloss paint. The unique composition of its ingredients ensure high durability and reproducibility of colour, uniform surface, and long-lasting gloss. 'BOSMAN professional' spray paint is perfect for both indoor and outdoor use.

INTENDED USE

Perfect as both indoor and outdoor paint. Intended for decorative spray painting of various surfaces, e.g.: painting of items made of metal, plastics, gypsum, and wood, vehicle body sheet metal, bicycles, furniture, etc. Prior to being painted with the 'BOSMAN' spray paint, the steel substrate has to be secured using 'BOSMAN' anti corrosive spray primer paint.



LOGISTIC INFORMATION

COLOUR	CAPACITY	PACKAGING TYPE	COLLECTIVE PACKAGING	QUANTITY ON A PALLET
<input type="checkbox"/> matt white	400 ml	can	6 pcs	1350 pcs
<input type="checkbox"/> glossy white				
<input type="checkbox"/> green moss				
<input type="checkbox"/> chocolate				
<input type="checkbox"/> bright red				
<input type="checkbox"/> dark blue				
<input type="checkbox"/> gold metal				
<input type="checkbox"/> yellow				
<input type="checkbox"/> dark red				
<input type="checkbox"/> grey				
<input type="checkbox"/> matt black				
<input type="checkbox"/> anthracite				
<input type="checkbox"/> silver chrome				
<input type="checkbox"/> colourless				
<input type="checkbox"/> black gloss				





SPRAY PAINTS

'BOSMAN' PRIMER PAINT, GREY

PLYN-SPR-400



PROPERTIES

'BOSMAN professional' spray primer paint in grey colour is an all-purpose, quick-drying, high-gloss paint. The unique composition of its ingredients ensure high durability and reproducibility of colour, uniform surface, and long-lasting gloss. It is perfect for both indoor and outdoor use.

INTENDED USE

Perfect as both indoor and outdoor paint protecting against corrosion. Intended for application as primer paint to be used under decorative 'BOSMAN' spray paints on various surfaces, e.g. for: painting of items made of metal, plastics, gypsum, and wood, vehicle body sheet metal, bicycles, furniture, etc.



LOGISTIC INFORMATION

COLOUR	CAPACITY	PACKAGING TYPE	COLLECTIVE PACKAGING	QUANTITY ON A PALLET
■ grey	400 ml	can	6 pcs	960 pcs

'BOSMAN PROFESSIONAL' FIREPROOF ENAMEL



PROPERTIES

'BOSMAN' FIREPROOF ENAMELS are professional silicone paints intended for painting surfaces working in high temperatures, characterised by excellent coverage of painted surfaces and high resistance to atmospheric factors. FIREPROOF ENAMELS can be used for painting grills, barbecues, fireplaces, mufflers, heaters, heating coils, boilers, pipes, and other elements that heat up to the temperature above 220°C. Thermosetting silicone surface paint.



LOGISTIC INFORMATION

COLOUR	CAPACITY	PACKAGING TYPE	COLLECTIVE PACKAGING	QUANTITY ON A PALLET
■ black	400 ml	can	6 pcs	960 pcs
□ silver				

'BOSMAN PROFESSIONAL' FLUOMARKER SPRAY



PROPERTIES

'BOSMAN FLUOMARKER SPRAY' acrylic paint is intended for all kinds of marking on roads, trees and installations of all kinds. Thanks to increased pigment content it is possible to make any kinds of writings, even very thin. Thanks to a special nozzle, it is possible to rotate the can within the 360 degrees range and write in any position. It is the most convenient and practical form of marking all kinds of items, e.g. asphalt, concrete, pipes, and even ground and snow.



LOGISTIC INFORMATION

COLOUR	CAPACITY	PACKAGING TYPE	COLLECTIVE PACKAGING	QUANTITY ON A PALLET
■ orange	500 ml	can	6 pcs	1350 pcs
■ yellow	500 ml	can	6 pcs	1350 pcs
■ green	500 ml	can	6 pcs	1350 pcs

BOSMAN®

professional series
for everybody

silicones | foams | impregnants | adhesives

WITH US, BUILDING AND RENOVATING IS EASIER





PLASTYFIKATORY

CONCRETE ADDITIVES

NEW FORMULA TECHNOLOGY

SUPER EFFICIENT IMPROVES CONCRETE STRENGTH

A RELIABLE PRODUCT FOR WALLS AND CONCRETE



CONCRETE ADMIXTURE AND CONCRETE?

A concrete admixture is the material added while making a concrete mix in order to alter its properties. The binder present in the concrete mix is water and cement. These ingredients combine with fillers such as sand, gravel, and aggregate in appropriate proportions.

One might ask: "what is the point of using these admixtures?" They actually make the mixes more liquid, thanks to which the amount of water required for mixing is reduced, leading to improvement in concrete properties.

Meanwhile, in winter they reduce the freeze point for water in concrete, as well as reducing the amount of water required for mixing. It is worth knowing that the more an admixture liquefies a mix, the more it reduces its absorbability and the better the strength, tightness and frost resistance of concrete will be.

- In view of formation of deposits on the bottom of packaging, the agent should be mixed thoroughly and shaken prior to use.
- Mix everything well in order for all the ingredients to combine with one another.
- The finished mortar featuring a concrete admixture has improved plasticity and better workability. It also has improved watertightness.
- It is excellent for floorings with a floor heating system.
- The finished mortar featuring a concrete admixture has improved strength as well. Hard plaster without cracks.

NEW FORMULA TECHNOLOGY



TIGHTNESS

FROST RESISTANCE

COMPRESSION STRENGTH





SUPERPLASTICIZER FOR FLOOR HEATING SYSTEMS

OGRZ-PLAS-...



PROPERTIES

Liquid product.

INTENDED USE

The superplasticizer is an all-purpose plasticizer intended for production of all types of concrete with improved physical and chemical properties that are used in building industry.

Advantages of the PLASTICIZER FOR JOINTLESS FLOORINGS / FLOOR HEATING SYSTEMS:

- reduces the amount of batched water significantly,
- increases concrete strength,
- does not affect the setting time,
- allows reduction of the mixing time at a concrete mixer,
- facilitates concrete pumping.

LOGISTIC INFORMATION

COLOUR	CAPACITY	PACKAGING TYPE	COLLECTIVE PACKAGING	QUANTITY ON A PALLET
pink	1 L	bottle (PE)	15 pcs	540 pcs
	5 L	canister (PE)	1 pc.	108 pcs

'SUPER TYNKPLAST' ADMIXTURE - WINTER FOR BRICKLAYING IN WINTER (REPLACES LIME)

TYNKPLAST-...



INTENDED USE

Liquid product.

INTENDED USE

The admixture for bricklaying in winter is an all-purpose admixture that aerates and plastifies cement mortars of any type; it is designed for use in winter conditions, in temperatures down to -8°C.

Advantages of:

Admixture for bricklaying in winter:

- reduces the amount of batched water significantly,
- plastifies mortars and eliminates necessity of using lime,
- aerates mortar and improves its watertightness and freeze resistance,
- prolongs the period when mortar adjustments are possible,
- reduces the phenomenon of carbonate blooms,
- lowers the water freezing point

LOGISTIC INFORMATION

COLOUR	CAPACITY	PACKAGING TYPE	COLLECTIVE PACKAGING	QUANTITY ON A PALLET
brown	1 L	bottle (PE)	15 pcs	540 pcs
	5 L	canister (PE)	1 pc	108 pcs

BONDING BOOSTER AND PLASTIFIER FOR CONCRETE MIXES

PRZYS-PLA-500



PROPERTIES

'BOSMAN' plastifier is an admixture that accelerates bonding and plastifies the concrete mix. The product clearly accelerates starting and finishing concrete bonding, reduces the amount of water required for mixing, improves initial strength without lowering the final strength of concrete, and enables speeding up most concrete works. Facilitates concrete laying and accelerates the process of removing the element from the mould. Also allowed reducing the time of mixing in the concrete mixer.

LOGISTIC INFORMATION

COLOUR	CAPACITY	PACKAGING TYPE	COLLECTIVE PACKAGING	QUANTITY ON A PALLET
transparent	5 L	canister (PE)	1 pc.	108 pcs

'ZIMOPLAST' - FOR PREPARATION OF CONCRETE AT LOW TEMPERATURES

ZIMOPLAST-...



INTENDED USE

Liquid product.

INTENDED USE

'Zimoplast' is an all-purpose plastifier intended for producing all kinds of concrete in winter conditions in temperatures reaching -8°C.

Advantages of using 'ZIMOPLAST':

- it reduces the amount of batched water
- lowers the water freezing point
- increases concrete strength
- does not affect the setting time
- does not change aeration of the fresh mixture
- facilitates better concrete laying: removal of elements from moulds
- facilitates concrete pumping

LOGISTIC INFORMATION

COLOUR	CAPACITY	PACKAGING TYPE	COLLECTIVE PACKAGING	QUANTITY ON A PALLET
colourless				
blue				
	1 L	bottle (PE)	15 pcs	540 pcs
	5 L	canister (PE)	1 pc.	108 pcs



silicones | foams | impregnants | adhesives

HYDROPLAST (WATER SEALANT)

'HYDROPLAST'



PROPERTIES

Liquid product.

INTENDED USE

'Hydroplast' is a sealing additive intended for all kinds of concrete with higher watertightness and frost resistance.

Advantages of using 'HYDROPLAST':

- it improves concrete tightness decidedly
- it aerates concrete mix slightly
- it does not change the setting time



LOGISTIC INFORMATION

COLOUR	CAPACITY	PACKAGING TYPE	COLLECTIVE PACKAGING	QUANTITY ON A PALLET
pink	1 L	bottle (PE)	15 pcs	540 pcs
	5 L	canister (PE)	1 pc.	108 pcs

FROSTPROOF LIQUID FOR MIXING WITH ADHESIVES (FOR POLYSTYRENE FOAM, FOR MESH SINKING, FOR TILES)

MROZOKLEJ...



PROPERTIES

Liquid product.

INTENDED USE

A frostproof liquid for mixing with adhesives that enables carrying out thermal insulation works, tile bonding, and making self-levelling concrete underlayments during the low temperature season. The preparation can be used in temperatures down to -10°C.



LOGISTIC INFORMATION

COLOUR	CAPACITY	PACKAGING TYPE	COLLECTIVE PACKAGING	QUANTITY ON A PALLET
brown	5 L	canister (PE)	1 pc.	108 pcs

SUPERPLASTICIZER FOR FLOOR HEATING SYSTEMS

OGRZ-PLAS...



PROPERTIES

Liquid product.

INTENDED USE

The superplasticizer is an all-purpose plasticizer intended for production of all types of concrete with improved physical and chemical properties that are used in building industry.

Advantages of the PLASTICIZER FOR JOINTLESS FLOORINGS / FLOOR HEATING SYSTEMS:

- reduces the amount of batched water significantly,
- increases concrete strength,
- does not affect the setting time,
- allows reduction of the mixing time at a concrete mixer,
- facilitates concrete pumping.



LOGISTIC INFORMATION

COLOUR	CAPACITY	PACKAGING TYPE	COLLECTIVE PACKAGING	QUANTITY ON A PALLET
pink	1 L	bottle (PE)	15 pcs	540 pcs
	5 L	canister (PE)	1 pc.	108 pcs

ADMIXTURE SACHETS (LIME REPLACEMENT)

TYNKP...



SUMMER

INTENDED USE

For cement mortars with high strength and resistance to weather conditions. The SUMMER admixture for mortars is very effective at plastifying cement mortars, providing them with plasticity and good workability. These properties limit significantly the amount of water required in the mortar, leading to an increase in strength and limitation of outflow of water from the mortar. As a result, we can obtain hard, frostproof and non-absorbable plaster without visible microcracks. It limits significantly the occurrence of calcium carbonate bloom on walls, bricks, and plasters. It replaces lime in masonry mortars.



LOGISTIC INFORMATION

COLOUR	CAPACITY	PACKAGING TYPE	COLLECTIVE PACKAGING	QUANTITY ON A PALLET
brown	20 g	sachet	100 pcs	10 000 pcs.



ADMIXTURE SACHETS (LIME REPLACEMENT)

TYNKP-...

WINTER



INTENDED USE

For cement mortars with high strength and resistance to weather conditions. The WINTER admixture for mortars is very effective at plastifying cement mortars, providing them with plasticity and good workability. These properties limit significantly the amount of water required in the mortar, leading to an increase in strength and limitation of outflow of water from the mortar. As a result, we can obtain hard, frostproof and non-absorbable plaster without visible microcracks. It limits significantly the occurrence of calcium carbonate bloom on walls, bricks, and plasters. It replaces lime in masonry mortars. The WINTER additive allows plastering and bricklaying with the use of cement and cement-lime mortars during low temperature periods (-8°C) without deterioration of physical properties of plasters and mortars prepared.



LOGISTIC INFORMATION

COLOUR	CAPACITY	PACKAGING TYPE	COLLECTIVE PACKAGING	QUANTITY ON A PALLET
■ brown	87 g	sachet	50 pcs	5 000 pcs.

'BOSMAN' SODIUM WATER GLASS (WATER SEALANT)

RZ-SZLO



INTENDED USE

For insulating concrete structures against moisture and penetration by water, and as an admixture increasing the bonding rate. For insulating against the impact of moisture and penetration by water: the element protected should be painted (it is recommended to apply at least two layers of the protective coating). As an admixture increasing the cement mortar bonding rate (the bonding rate depends on the cement type; it can be adjusted by increasing or decreasing the amount of WATER GLASS added). It is recommended to carry out bonding rate tests.



LOGISTIC INFORMATION

COLOUR	CAPACITY	PACKAGING TYPE	COLLECTIVE PACKAGING	QUANTITY ON A PALLET
□ colourless	1 L	bottle (PE)	15 pcs	540 szt.
	5 L	canister (PE)	1 pc.	108 szt.

WITH US, BUILDING AND RENOVATING IS EASIER

BOSMAN[®]

professional series
for everybody

silicones | foams | impregnants | adhesives

**GUARANTEE
QUALITY
FOR 25 YEARS!!**

**MANUFACTURER
OF A COMPLETE OFFER**

CONSTRUCTION CHEMISTRY

BOSMAN[®] - A GOOD CHOICE

odadoz.pl



BOSMAN[®]professional series
for everybody

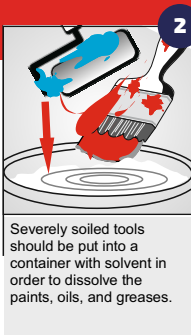
silicones | foams | impregnants | adhesives

**BUILDING AND REPAIRING IS EASIER WITH OUR PRODUCTS**

SOLVENTS

PAINT, GREASE, AND OIL STAINS VS. SOLVENT?

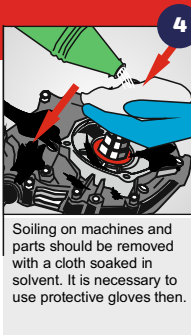
1
Pour the solvent into a larger container. It is necessary to remember about safety measures and protective clothing.



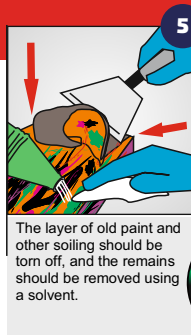
2
Severely soiled tools should be put into a container with solvent in order to dissolve the paints, oils, and greases.



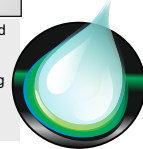
3
Once the soiling is completely dissolved, it is necessary to remove clean tools and wipe them dry with a clean cloth for further use.



4
Soiling on machines and parts should be removed with a cloth soaked in solvent. It is necessary to use protective gloves then.



5
The layer of old paint and other soiling should be torn off, and the remains should be removed using a solvent.

**ATTENTION**
Before using the product, carry out a test using a small amount of it!

NEW TECHNOLOGY

NEW

REUSABLE PACKAGING

DOES NOT WEATHER
DOES NOT CHANGE COLOUR
DOES NOT EMIT VAPOURS



PRODUCT CATALOGUE



SOLVENTS - METAL PACKAGING

ALL-PURPOSE SOLVENT

RO-UN-MET...



PROPERTIES

Liquid product.

INTENDED USE

It is intended for thinning varnishes and paints, and for cleaning tools.



LOGISTIC INFORMATION

COLOUR	CAPACITY	PACKAGING TYPE	COLLECTIVE PACKAGING	QUANTITY ON A PALLET
<input type="checkbox"/> colourless				
	1 L	metal can	10 pcs	550 pcs
	5 L	metal can	6 pcs	150 pcs

NITRO-BASED SOLVENT

RO-NI-MET...



PROPERTIES

Liquid product.

INTENDED USE

It is intended for thinning phthalates - coat forming ingredients of paints and varnishes, e.g. nitrocellulose products with up to working viscosity, and may also be used as paint remover.



LOGISTIC INFORMATION

COLOUR	CAPACITY	PACKAGING TYPE	COLLECTIVE PACKAGING	QUANTITY ON A PALLET
<input type="checkbox"/> colourless				
	1 L	metal can	10 pcs	550 pcs
	5 L	metal can	6 pcs	150 pcs

CHLORINATED RUBBER SOLVENT

RO-CH-MET...



PROPERTIES

Liquid product.

INTENDED USE

It is intended for thinning varnishes and chlorinated rubber and asphalt paints, and for cleaning tools.



LOGISTIC INFORMATION

COLOUR	CAPACITY	PACKAGING TYPE	COLLECTIVE PACKAGING	QUANTITY ON A PALLET
<input type="checkbox"/> colourless				
	1 L	metal can	10 pcs	550 pcs
	5 L	metal can	6 pcs	150 pcs

CARBAMIDE SOLVENT

RO-KARB-MET...



PROPERTIES

Liquid product.

INTENDED USE

It is intended for diluting carbamide paints and lacquers and for washing tools.



LOGISTIC INFORMATION

COLOUR	CAPACITY	PACKAGING TYPE	COLLECTIVE PACKAGING	QUANTITY ON A PALLET
<input type="checkbox"/> colourless				
	1 L	metal can	10 pcs	550 pcs
	5 L	metal can	6 pcs	150 pcs



PHTHALIC SOLVENT

RO-FT-MET...



PROPERTIES

Liquid product.

INTENDED USE

It is intended for thinning phthalates - coat forming ingredients, phthalate, oil, and bitumen products, and for cleaning tools.



LOGISTIC INFORMATION

COLOUR	CAPACITY	PACKAGING TYPE	COLLECTIVE PACKAGING	QUANTITY ON A PALLET
<input type="checkbox"/> colourless				
	1 L	metal can	10 pcs	550 pcs
	5 L	metal can	6 pcs	150 pcs

ACETONE SOLVENT

RO-AC-MET...



PROPERTIES

Liquid product.

INTENDED USE

It is intended for degreasing surfaces prior to painting, for using as a thinner for nitrocellulose products, fats, and wax, and for cleaning tools after painting.



LOGISTIC INFORMATION

COLOUR	CAPACITY	PACKAGING TYPE	COLLECTIVE PACKAGING	QUANTITY ON A PALLET
<input type="checkbox"/> colourless				
	1 L	metal can	10 pcs	550 pcs
	5 L	metal can	6 pcs	150 pcs

EXTRACTION SOLVENT

RO-EK-MET...



PROPERTIES

Liquid product.

INTENDED USE

It is intended for thinning phthalates - coat forming ingredients, phthalate paints, and oil paints, and for surface degreasing.



LOGISTIC INFORMATION

COLOUR	CAPACITY	PACKAGING TYPE	COLLECTIVE PACKAGING	QUANTITY ON A PALLET
<input type="checkbox"/> colourless				
	1 L	metal can	10 pcs	550 pcs
	5 L	metal can	6 pcs	150 pcs

PURE PETROLEUM ETHER

RO-BE-MET...



PROPERTIES

Liquid product.

INTENDED USE

It is intended for household application as a remover of fats and greases from metal surfaces.



LOGISTIC INFORMATION

COLOUR	CAPACITY	PACKAGING TYPE	COLLECTIVE PACKAGING	QUANTITY ON A PALLET
<input type="checkbox"/> colourless				
	1 L	metal can	10 pcs	550 pcs
	5 L	metal can	6 pcs	150 pcs





ALL-PURPOSE SOLVENT

ROZ-UN-AN...



PROPERTIES

Liquid product.

INTENDED USE

It is intended for thinning varnishes and paints, and for cleaning tools.



LOGISTIC INFORMATION

COLOUR	CAPACITY	PACKAGING TYPE	COLLECTIVE PACKAGING	QUANTITY ON A PALLET
<input type="checkbox"/> colourless	0,5 L	bottle (PE)	20 pcs	1260 pcs
	5 L	canister (PE)	1 pc.	108 pcs
	200 L	barrel (PE)	1 pc.	

NITRO-BASED SOLVENT

ROZ-NI...



PROPERTIES

Liquid product.

INTENDED USE

It is intended for thinning phthalates - coat forming ingredients of paints and varnishes, e.g. nitrocellulose products with up to working viscosity, and may also be used as paint remover.



LOGISTIC INFORMATION

COLOUR	CAPACITY	PACKAGING TYPE	COLLECTIVE PACKAGING	QUANTITY ON A PALLET
<input type="checkbox"/> colourless	0,5 L	bottle (PE)	20 pcs	1260 pcs
	5 L	canister (PE)	1 pc.	108 pcs
	200 L	barrel (PE)	1 pc.	

CHLORINATED RUBBER SOLVENT

ROZ-CH...



PROPERTIES

Liquid product.

INTENDED USE

It is intended for thinning varnishes and chlorinated rubber and asphalt paints, and for cleaning tools.



LOGISTIC INFORMATION

COLOUR	CAPACITY	PACKAGING TYPE	COLLECTIVE PACKAGING	QUANTITY ON A PALLET
<input type="checkbox"/> colourless	0,5 L	bottle (PE)	20 pcs	1260 pcs
	5 L	canister (PE)	1 pc.	108 pcs
	200 L	barrel (PE)	1 pc.	

CARBAMIDE SOLVENT

ROZ-KARB...



PROPERTIES

Liquid product.

INTENDED USE

It is intended for diluting carbamide paints and lacquers and for washing tools.



LOGISTIC INFORMATION

COLOUR	CAPACITY	PACKAGING TYPE	COLLECTIVE PACKAGING	QUANTITY ON A PALLET
<input type="checkbox"/> colourless	0,5 L	bottle (PE)	20 pcs	1260 pcs
	5 L	canister (PE)	1 pc.	108 pcs
	200 L	barrel (PE)	1 pc.	

PHTHALIC SOLVENT

ROZ-FTA...



PROPERTIES

Liquid product.

INTENDED USE

It is intended for thinning phthalates - coat forming ingredients, phthalate, oil, and bitumen products, and for cleaning tools.



LOGISTIC INFORMATION

COLOUR	CAPACITY	PACKAGING TYPE	COLLECTIVE PACKAGING	QUANTITY ON A PALLET
<input type="checkbox"/> colourless				
	0,5 L	bottle (PE)	20 pcs	1260 pcs
	5 L	canister (PE)	1 pc.	108 pcs

WAXING SOLVENT

ROZ-L...



PROPERTIES

Liquid product.

INTENDED USE

It is intended for thinning wax paints, oil paints, and asphalt paints, and for cleaning tools.



LOGISTIC INFORMATION

COLOUR	CAPACITY	PACKAGING TYPE	COLLECTIVE PACKAGING	QUANTITY ON A PALLET
<input type="checkbox"/> colourless				
	0,5 L	bottle (PE)	20 pcs	1260 pcs
	5 L	canister (PE)	1 pc.	108 pcs
	200 L	barrel (PE)	1 pc.	

EXTRACTION SOLVENT

ROZ-BE...



PROPERTIES

Liquid product.

INTENDED USE

It is intended for thinning phthalates - coat forming ingredients, phthalate paints, and oil paints, and for surface degreasing.



LOGISTIC INFORMATION

COLOUR	CAPACITY	PACKAGING TYPE	COLLECTIVE PACKAGING	QUANTITY ON A PALLET
<input type="checkbox"/> colourless				
	0,5 L	bottle (PE)	20 pcs	1260 pcs
	5 L	canister (PE)	1 pc.	108 pcs
	200 L	barrel (PE)	1 pc.	

ACETONE SOLVENT

ROZ-AC...



PROPERTIES

Liquid product.

INTENDED USE

It is intended for degreasing surfaces prior to painting, for using as a thinner for nitrocellulose products, fats, and wax, and for cleaning tools after painting.



LOGISTIC INFORMATION

COLOUR	CAPACITY	PACKAGING TYPE	COLLECTIVE PACKAGING	QUANTITY ON A PALLET
<input type="checkbox"/> colourless				
	0,5 L	bottle (PE)	20 pcs	1260 pcs
	5 L	canister (PE)	1 pc.	108 pcs
	200 L	barrel (PE)	1 pc.	





'DENATURAN' SPIRITS-BASED SOLVENT

ROZ-D...



PROPERTIES

Liquid product.

INTENDED USE

Intended as a remover of paints, adhesives and similar chemical products. It is used for surface cleaning and degreasing.

LOGISTIC INFORMATION

COLOUR	CAPACITY	PACKAGING TYPE	COLLECTIVE PACKAGING	QUANTITY ON A PALLET
<input type="checkbox"/> colourless	0,5 L	bottle (PE)	20 pcs	1260 pcs
	5 L	canister (PE)	1 pc.	108 pcs
	200 L	barrel (PE)	1 pc.	

'KEROSENE' THINNER

ROZ-NF...



PROPERTIES

Liquid product.

INTENDED USE

It is intended for household application as a remover of fats and greases from metal surfaces.

LOGISTIC INFORMATION

COLOUR	CAPACITY	PACKAGING TYPE	COLLECTIVE PACKAGING	QUANTITY ON A PALLET
<input type="checkbox"/> colourless	0,5 L	bottle (PE)	20 pcs	1260 pcs
	5 L	canister (PE)	1 pc.	108 pcs
	200 L	barrel (PE)	1 pc.	

TOLUENE

ROZ-TO-050



PROPERTIES

Liquid product.

INTENDED USE

Intended for organic and rubber materials, and paints.

LOGISTIC INFORMATION

COLOUR	CAPACITY	PACKAGING TYPE	COLLECTIVE PACKAGING	QUANTITY ON A PALLET
<input type="checkbox"/> colourless	0,5 L	bottle (PE)	20 pcs	1260 pcs
	5 L	canister (PE)	1 pc.	108 pcs

XYLENE

ROZ-KS...



PROPERTIES

Liquid product.

INTENDED USE

It is used in paint production and as a thinner for oils, waxes, resins, and fats.

LOGISTIC INFORMATION

COLOUR	CAPACITY	PACKAGING TYPE	COLLECTIVE PACKAGING	QUANTITY ON A PALLET
<input type="checkbox"/> colourless	0,5 L	bottle (PE)	20 pcs	1260 pcs
	5 L	canister (PE)	1 pc.	108 pcs

RC01 NITRO-BASED SOLVENT

ROZ-RC-01...



PROPERTIES

Liquid product.

INTENDED USE

It is intended for diluting phthalates - agents that enhance coat formation in paints and varnishes.

LOGISTIC INFORMATION

COLOUR	CAPACITY	PACKAGING TYPE	COLLECTIVE PACKAGING	QUANTITY ON A PALLET
<input type="checkbox"/> colourless	0,5 L	bottle (PE)	20 pcs	1260 pcs
	5 L	canister (PE)	1 pc.	108 pcs
	200 L	barrel (PE)	1 pc.	

PURE PETROLEUM ETHER

ROZ-BE...



PROPERTIES

Liquid product.

INTENDED USE

It is intended for household application as a remover of fats and greases from metal surfaces.

LOGISTIC INFORMATION

COLOUR	CAPACITY	PACKAGING TYPE	COLLECTIVE PACKAGING	QUANTITY ON A PALLET
<input type="checkbox"/> colourless	0,5 L	bottle (PE)	20 pcs	1260 pcs
	5 L	canister (PE)	1 pc.	108 pcs
	200 L	barrel (PE)	1 pc.	

AQUEOUS AND SOLVENT ADHESIVES



**SUPER EFFICIENT
SUPER STRONG**

'WICOL BOSMAN' ADHESIVE

KLB-VI...



INTENDED USE

'Wicol BOSMAN' adhesive is intended for bonding wood and wood-like materials. It provides resilient and rigid joints. The 'Wicol' adhesive is characterised by very good adherence to wood and cork. It bonds these materials in different combinations. It is useful for joinery work, do-it-yourself work, and repairs.

LOGISTIC INFORMATION

COLOUR	CAPACITY	PACKAGING TYPE	COLLECTIVE PACKAGING	QUANTITY ON A PALLET
<input type="checkbox"/> white	50 g	tube	30 pcs	
	0,2 kg	bottle (PE)	15 pcs	540 pcs
	1 kg	bucket	12 pcs	480 pcs
	5 kg	bucket	1 pc.	108 pcs





ADHESIVE FOR WOOD AND D3 CLASS FLOOR PANELS

KLB-DR-D3-050



PROPERTIES

After drying, it forms a strong and colourless joint. Does not drip. Does not contain solvents. Durability class 3D.

INTENDED USE

The class 3D adhesive for wood and floor panels is intended for bonding wood, joinery, panels, plywood, cork, boards, laminates, felt, and fabrics.



LOGISTIC INFORMATION

COLOUR	CAPACITY	PACKAGING TYPE	COLLECTIVE PACKAGING	QUANTITY ON A PALLET
<input type="checkbox"/> white	0,5 L	bottle (PE)	12 pcs	480 pcs

'OSAKRYL BOSMAN' ADHESIVE

KLB-OS-...



INTENDED USE

'OSAKRYL BOSMAN' adhesive is intended for bonding flexible linings made of PVC, without insulation layer of VINIGRAM RECORD, VINIGRAM SPECIAL S and LENTEX type (in the form of tiles and sheets), and also parquet, non-varnished wood mosaic, tiles, and terracotta to concrete and cement surfaces.



LOGISTIC INFORMATION

COLOUR	CAPACITY	PACKAGING TYPE	COLLECTIVE PACKAGING	QUANTITY ON A PALLET
<input type="checkbox"/> white	1 kg	bucket	8 pcs	480 pcs
	6 kg	bucket	1 pc.	77 pcs
	12 kg	bucket	1 pc.	44 pcs

'BOSMAN' ALL-PURPOSE POLYMER ADHESIVE

KLB-UN-...



INTENDED USE

'BOSMAN' all-purpose polymer adhesive is used for bonding (repairing) tiles, parquet, parquet mosaic, EPS ceiling panels, wooden and wood-like ceiling panels, EPS screens behind radiators and PS tiles to any smooth substrates, such as: concrete, gypsum boards, plaster, wooden boards, chipboards, fibreboards, and flaxboards.



LOGISTIC INFORMATION

COLOUR	CAPACITY	PACKAGING TYPE	COLLECTIVE PACKAGING	QUANTITY ON A PALLET
<input type="checkbox"/> colourless	450 g	bottle (PE)	24 pcs	480 pcs
	900 g	bottle (PE)	12 pcs	480 pcs

BOSMAN®

professional series
for everybody

silicones | foams | impregnants | adhesives

WITH US, BUILDING AND RENOVATING IS EASIER



'BOSMAN BUTAPREN A' ADHESIVE

KLA-BT-004



PROPERTIES

Hydrogen treated light petrol (petroleum), acetone.

INTENDED USE

'BUTAPREN' adhesive based on rubber is intended mainly for shoe manufacturing and bonding natural leather, rubber and woven fabrics. It also bond wood, cardboard, felt, and certain plastics. After drying, it forms a flexible and durable joint. Bonding temperature from 18°C to 25°C.



LOGISTIC INFORMATION

COLOUR	CAPACITY	PACKAGING TYPE	COLLECTIVE PACKAGING	QUANTITY ON A PALLET
■ brown	40 ml	tube	100 pcs	

'BOSMAN' SHOEMAKER'S ADHESIVE

KLA-SZ-040



PROPERTIES

A polyurethane-based superfast and transparent adhesive that does not require temperature activation and does not stain the materials bonded; it is flexible and resistant to aging.

INTENDED USE

Bonding natural and artificial leather, PU, PVC, rubber, styrogum (porous rubber), metal, glass, felt, and wood.



LOGISTIC INFORMATION

COLOUR	CAPACITY	PACKAGING TYPE	COLLECTIVE PACKAGING	QUANTITY ON A PALLET
□ transparent	47 ml	tube	84 pcs	

BITUMINOUS COMPOUNDS

INSULATIONS
AGAINST
MOISTURE

PERMANENTLY FLEXIBLE
SUPER ADHESIVE
WATERPROOF



ITB®

Instytut Techniki Budowlanej





'MEGA BITUM DYSPERBIT'

MEG-DYSPE...

SUMMER



PROPERTIES

For dry and wet substrates. Does not drip from vertical surfaces (up to 120°C). Maintains permanent flexibility. High mechanical resistance.

INTENDED USE

It is used for making insulating coats resistant to moisture, refurbishing and preserving bitumen roofing, jointless roofing reinforced with technical fabrics, and jointless roof coats on a base of one layer of building paper, and making light insulation of foundations, and insulation for cellars, garages, terraces, and balconies.



LOGISTIC INFORMATION

COLOUR	CAPACITY	PACKAGING TYPE	COLLECTIVE PACKAGING	QUANTITY ON A PALLET
■ black	10 kg	bucket	1 pc.	55 pcs
	20 kg	bucket	1 pc.	33 pcs

'MEGA BITUM' DYSPERBIT ASPHALT AND WINTER RUBBER COMPOUND FOR INSULATING

MEG-DYSPE...

WINTER



PROPERTIES

For dry and wet substrates. Does not drip from vertical surfaces. Maintains permanent flexibility. High mechanical resistance.

INTENDED USE

It is used for making insulating coats resistant to moisture, refurbishing and preserving bitumen roofing, jointless roofing reinforced with technical fabrics, and jointless roof coats on a base of one layer of building paper, and making light insulation of foundations, and insulation for cellars, garages, terraces, and balconies.



LOGISTIC INFORMATION

COLOUR	CAPACITY	PACKAGING TYPE	COLLECTIVE PACKAGING	QUANTITY ON A PALLET
■ black	20 kg	bucket	1 pc.	33 pcs

'MEGA BITUM' SOLVENT PRIMER

MEG-GRUNT...



PROPERTIES

Solvent-based, deeply penetrating, slightly modified with synthetic rubber, permanently flexible, capable of eliminating surface microcracks, and suitable for dry and slightly damp surfaces. It is resistant to water, weak acids and bases.

INTENDED USE

It is used for priming concrete and bituminous substrates. The primer is used under hydroinsulating solvent coats and thermally bonded building paper. Light hydroinsulation against moisture.



LOGISTIC INFORMATION

COLOUR	CAPACITY	PACKAGING TYPE	COLLECTIVE PACKAGING	QUANTITY ON A PALLET
■ black	10 kg	bucket	1 pc.	55 pcs
	18 kg	bucket	1 pc.	33 pcs

'MEGA BITUM' BINDER FOR COLD APPLICATION

MEG-LEPIK...



PROPERTIES

It is modified with synthetic rubber, with admixture of chemical compounds that improve adherence to different substrates. To be used on dry and slightly damp substrates. It is flexible and resistant to water, weak acids, alkalis and aggressive compounds present in soil. It contains a solvent.

INTENDED USE

It is intended for bonding building paper and light (anti-moisture) hydroinsulation. For bonding asphalt building paper to substrates and other building paper in laminar coats. Light anti-moisture insulation of foundations.



LOGISTIC INFORMATION

COLOUR	CAPACITY	PACKAGING TYPE	COLLECTIVE PACKAGING	QUANTITY ON A PALLET
■ black	10 kg	bucket	1 pc.	55 pcs
	19 kg	bucket	1 pc.	33 pcs

'MEGA BITUM' COAT COMPOUND

MEG-MAS-P...



PROPERTIES

It is moderately modified with synthetic rubber (permanently flexible coat bonded strongly to the substrate), with additions of resins and chemical compounds that improve adherence to different substrates. To be used on dry and slightly damp substrates. It compresses small substrate movements and microcracks. It is fully resistant to water, weak acids and alkali. It contains an organic solvent.

INTENDED USE

It is used for making moderately waterproof insulating coats, for refurbishing and preserving roofing made of building paper, for making jointless hydroinsulating roof coats on building paper, for moderate insulation of underground parts of buildings, and for laminates (including these reinforced with technical fabrics) that seal bottoms of industrial water reservoirs.



LOGISTIC INFORMATION

COLOUR	CAPACITY	PACKAGING TYPE	COLLECTIVE PACKAGING	QUANTITY ON A PALLET
■ black	10 kg	bucket	1 pc.	55 pcs
	19 kg	bucket	1 pc.	27-33 pcs

'MEGA BITUM STYRBIT'

MEG-STYRB...



PROPERTIES

It is highly modified with synthetic rubber with admixture of resins and chemical compounds that improve adherence of EPS to bituminous substrates, concrete and sheet metal. To be used on dry or slightly damp substrate. Unique elastoplastic properties. It is fully resistant to water, weak acids, and alkali. It contains an organic solvent that is safe for EPS.

INTENDED USE

It is used for bonding EPS boards and building paper, for all-season bonding of EPS boards and laminar boards to concrete, bituminous substrates, and sheet metal, and for bonding building paper to concrete and to other building paper.



LOGISTIC INFORMATION

COLOUR	CAPACITY	PACKAGING TYPE	COLLECTIVE PACKAGING	QUANTITY ON A PALLET
■ black	10 kg	bucket	1 pc.	55 pcs
	20 kg	bucket	1 pc.	33 pcs

'MEGA BITUM' ROOFWORK PUTTY

MEG-SZPACH



PROPERTIES

It is highly modified with synthetic rubber and reinforced with fibres. Full resistance to water and compounds occurring in soil. To be used outdoors.

INTENDED USE

It is designed for roofwork repairs and sealing in building industry, repairs of blisters and leaks, filling missing elements in old roofing, sealing and repairing of flashing, and for surface levelling. It forms elastoplastic seamless hydroinsulating coats on underground parts of buildings (water reservoirs with concrete pressure plate).



LOGISTIC INFORMATION

COLOUR	CAPACITY	PACKAGING TYPE	COLLECTIVE PACKAGING	QUANTITY ON A PALLET
■ black	10 kg	bucket	12 pc.	378 pcs
	5 kg	bucket	1 pc.	80 pcs

'MEGA BITUM 2K' TWO-COMPONENT SEALING MORTAR FOR WATERPROOFING BALCONIES AND TERRACES

MEG-2K-10KG



PROPERTIES

The two-component sealing mortar provides high waterproofness, good adherence to the substrate, and perfect resistance to weather conditions. It can be used in contact with EPS.

INTENDED USE

Insulation under tiles and ceramic linings - outdoors: balconies and terraces; and indoors: toilets, bathrooms, laundries, kitchens, cellars, and washes. It can also be used for hydroinsulation of foundation walls, cellars, and pedestals.



LOGISTIC INFORMATION

COLOUR	CAPACITY	PACKAGING TYPE	COLLECTIVE PACKAGING	QUANTITY ON A PALLET
■ grey	10 kg	bucket	1 pc.	55 pcs





'MEGA BITUM- AQUA STOP' FOR EXTREME USES

MEG-WODA-STOP



PROPERTIES

A plastic bituminous compound in the form of paste; highly modified with synthetic rubber. It contains reinforcing fibres and chemical admixtures that enable using it not only on dry, but also on wet substrates, and displaces water. The coating formed from 'MEGA BITUM- AQUA STOP' compound is highly flexible and plastic, and is capable of compensating for even significant substrate movement. It is also waterproof. It can be used in contact with EPS.

INTENDED USE

'MEGA BITUM- AQUA STOP' is used for emergency repairs of damage and for leak sealing.



LOGISTIC INFORMATION

COLOUR	CAPACITY	PACKAGING TYPE	COLLECTIVE PACKAGING	QUANTITY ON A PALLET
■ black	1 kg	can	12 pcs	385 pcs

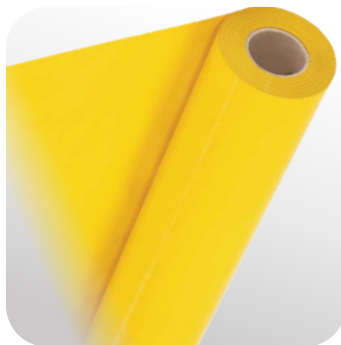
INSULATING BUILDING FILMS

FLEXIBLE
SUPER DURABLE
WATERPROOF



VAPOUR INSULATING BUILDING FILM

FOL-BUDOW-5



INTENDED USE

It is intended for making water-vapour-tight insulation in structure of roofs, walls, and ceilings. It provides indispensable roof protection against moisture. It stops water vapour pressing onto thermal insulations from within the rooms. It is characterized by high water-vapour-tightness, strength and resistance to cracks. Together with mineral wool and a water vapour permeable membrane, it forms a tight roof system. In addition, the water-vapour-tight film can provide a perfect layer resistant to moisture used under floors, flooring, jointless floors, etc.

LOGISTIC INFORMATION

COLOUR	CAPACITY	PACKAGING TYPE	COLLECTIVE PACKAGING	QUANTITY ON A PALLET
■ yellow	2 x 50	0,20	1 pc.	100 pcs

INSULATING BUILDING FILM

FOL-BUDOW-...



INTENDED USE

Intended for creating a layer resistant to moisture under floors, flooring or jointless floors. Provides excellent protection against dampness of thermal and acoustic insulation within floor structure. In view of its properties and its width, it can be used for all repair and building works as a layer protecting against moisture, dust, wind, etc. It can also be applied in provisional protection of roof slopes and for shielding of facades and window joinery during finishing works.

LOGISTIC INFORMATION

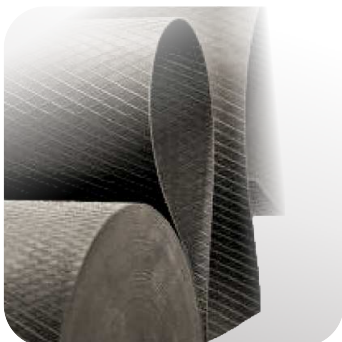
COLOUR	WIDTH X	THICKNESS	COLLECTIVE PACKAGING	QUANTITY ON A PALLET
■ black				
	4 x 25 / 5 x 20	200 i 300	1 pc.	100 pcs
	6 x 33	200 i 300	1 pc.	100 pcs





HORIZONTAL INSULATION FOR FOUNDATIONS

FOL-POZ...



INTENDED USE

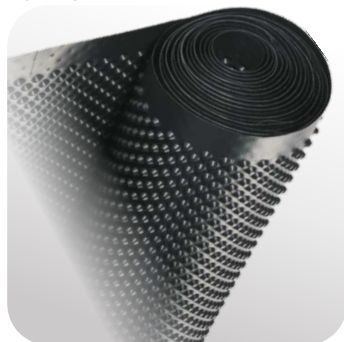
Intended for creating horizontal insulation for foundations. It protects building walls and masonry against capillary moisture, i.e. prevents penetration by moisture originating from soil. Horizontal foundation insulation can be applied even in the most demanding conditions for building investments. The waterproofness and water vapour permeability of insulations made of PE, which is several times better when compared to traditional PVC insulations make this horizontal insulation for foundations a perfect solution in difficult hydrological conditions. It can be applied even at -25°C as it does not lose its flexible properties; it is also decidedly lighter in comparison to PVC insulation of the same thickness. It is made of the highest quality PE with specially selected protective parameters, and at the same time with focus on easiness of installation in any conditions. Its suitable flexibility will be appreciated during its application in corners and all kinds of bends, where it will always remain undamaged. Contrary to traditional methods of insulating, our film is manufactured in all widths corresponding to standard widths of walls, masonry, and foundations. A well-made lining from horizontal insulation film requires no additional bonding or welding at joints. The wall pressure is sufficient to provide proper insulation as a result of film vulcanisation.

LOGISTIC INFORMATION

COLOUR	WIDTH m	LENGTH m	THICKNESS mm	WEIGHT PER M2	COLLECTIVE PACKAGING	QUANTITY ON A PALLET
■ black	0,25	50	±1,0	700 g/m ²	1 pc.	180 pcs
	0,365	50	±1,0	700 g/m ²	1 pc.	180 pcs
	0,4	50	±1,0	700 g/m ²	1 pc.	180 pcs

DIMPLED FILM VERTICAL INSULATION OF FOUNDATIONS

FOLIA-KUBEL...



INTENDED USE

It is intended for creating vertical insulation of foundations, walls and ceilings that have direct contact with the substrate. Thanks to dimpling, an air-gap is formed between the building structure and the insulation. Such a gap provides perfect water and water vapour drainage, preventing excessive moistness and hydrostatic pressure formation within the building areas that are exposed to waterlogging. In addition, dimpling prevents displacement of the insulation as a result of subsiding of the soil. Moreover, the film is effective when used for insulation of terraces, ceilings and floors, for sealing drainage ditches, and as a water draining layer in the green roof structures.

LOGISTIC INFORMATION

COLOUR	WIDTH m	LENGTH m	WEIGHT PER M2	EXTRUSION HEIGHT	COLLECTIVE PACKAGING	QUANTITY ON A PALLET
■ black	1	20	400 g/m ²	8	1 pc.	48 pcs
	1,5	20	400 g/m ²	8	1 pc.	24 pcs

PROTECTIVE BUILDING FILMS

FOL-BUDOW...



INTENDED USE

The films are intended for protecting building materials and tools, window joinery, ceilings, foundations, facades, and another surfaces exposed to moisture, dust, mud or UV radiation. Apply the protective film on the layer exposed to dirt (damage) in such a manner that prevents contact of the protected surface with external factors. Take care not to apply the film on elements that can damage the protective film structure.

LOGISTIC INFORMATION TYPES 200 and 300

COLOUR	WIDTH m	LENGTH m	COLLECTIVE PACKAGING	QUANTITY ON A PALLET
■ black				
	4	25	1 pc.	
	5	20	1 pc.	
	6	50	1 pc.	

LOGISTIC INFORMATION TYPE 200

COLOUR	WIDTH m	LENGTH m	COLLECTIVE PACKAGING	QUANTITY ON A PALLET
■ yellow	2	50	1 pc.	

ADHESIVE FILM PROTECTIVE, ANTI-SLIP

FOL-SAMOPRZYL



INTENDED USE

Secures glass panes in windows, windows, doors, floors, panels, parquets, stairs, rails, balustrades, etc. against destruction and mechanical damage during plastering, painting, and finishing works, and other renovation and construction works (gypsum finishing coats, stuccos, etc.).



LOGISTIC INFORMATION

COLOUR	WIDTH	BEAM	PACKAGING TYPE	COLLECTIVE PACKAGING	QUANTITY ON A PALLET
■ blue	500 mm	50 mb	roll	6 pcs	300 pcs





FOIL SHEETS - very strong

FOL-...



INTENDED USE

Foil Sheets XXL tarp ideal for covering garages, roofs, terraces, hay, winter wood, agricultural equipment, swimming pools, etc.

LOGISTIC INFORMATION

COLOUR	WIDTH	THICKNESS	COLLECTIVE PACKAGING	QUANTITY ON A PALLET
■ black		XXL PLATE	10 pcs	

PAINTER'S FILMS THIN, THICK, EXTRA THICK

FOL-O...



INTENDED USE

The painter's film is used as protection against paint, dust and moisture. It can be used during all works in a household, garage, or warehouse.

LOGISTIC INFORMATION

COLOUR	WIDTH	THICKNESS	COLLECTIVE PACKAGING	QUANTITY ON A PALLET
<input type="checkbox"/> transparent		THIN	50 pcs	
		THICK	20 pcs	
		EXTRA THICK	10 pcs	

BOSMAN PRIMER-CONTACT GLUE IN SPRAY

KLB-PRIMER-500ML



PRZEZNACZENIE

PRIMER-Contact Adhesive is intended for vapor barrier and construction foils, roofing membranes, warm installation tapes - it is a multi-purpose product in a spray that perfectly glues concrete, brick, metal, stone, cork, foil, ceramics, wood, rubber, rigid plastic, glass, polyethylene, as well as upholstery sponges, mineral wool, cardboard or fabrics. It perfectly combines a very wide range of materials, so it is suitable for all renovation and construction works and assembly, also as an adhesive for vapor barrier foil. The great advantage of the glue is that when you apply the glue to one of the surfaces to be glued, you can still correct the element, tear it off and move it for approx. 10 minutes. The surface from which we removed the element at this time is still clean! There is little glue absorbent, which ensures that the glued materials do not get wet and are highly efficient. The spray adhesive creates a waterproof, strong and flexible joint. It is quick-drying. It has a long open time. Suitable for porous and non-porous surfaces. It is immediately ready for use (just shake can) and does not require any additional accessories. Application of the product to both glued surfaces results in a very durable bond. Modern The applicator allows for very easy and professional adjustment of the glue stream, making our work comfortable in all condition.



INFORMACJE LOGISTYCZNE

POJEMNOŚĆ	TYP OPAKOWANIA	OPAKOWANIE ZBIORCZE	IŁOŚĆ NA PALETYCE
500 ml	puszka	12 szt.	1200 szt.

BOSMAN®

professional series
for everybody

silicones | foams | impregnants | adhesives

WITH US, BUILDING AND RENOVATING IS EASIER





LIQUID FILMS

EXCELLENT SEALING
PROTECTS AGAINST WATER
VERY FLEXIBLE

LIQUID FILM FOR OUTDOOR USE 'OD A DO Z FLEX'

FOLIA4



PROPERTIES

A ready to use, semi-liquid compound on the basis of a polymer dispersion. After drying, it forms a very elastic and waterproof protective coat that adheres tightly to the substrate and is highly resistant to weather conditions.

INTENDED USE

'Od A do Z Flex' liquid film is intended for forming sealing surface coats under outdoor ceramic claddings to prevent moisture penetration (terraces, sloping balconies).



LOGISTIC INFORMATION

COLOUR	CAPACITY	PACKAGING TYPE	COLLECTIVE PACKAGING	QUANTITY ON A PALLET
<input type="checkbox"/> blue	1,2 kg	bucket (PE)	1 pc.	378 pcs
	3,5 kg	bucket (PE)	1 pc.	144 pcs
	6 kg	bucket (PE)	1 pc.	80 pcs

LIQUID FILM FOR INDOOR USE 'OD A DO Z FLEX'

FOLIA...



PROPERTIES

A ready to use, semi-liquid compound on the basis of a polymer dispersion. After drying, it forms a very elastic, waterproof, protective coat that adheres tightly to the substrate.

INTENDED USE

'Od A do Z Flex' liquid film is intended for forming sealing surface coats under indoor ceramic claddings to prevent moisture penetration in rooms with increased humidity: bathrooms, showers, toilets, laundry rooms, dressing rooms, kitchens, cellars, and washing rooms. It is recommended especially in so-called wet zones, i.e. around bathtubs, shower cabins, washbasins, kitchen sinks, in corners, and in installation passages.



LOGISTIC INFORMATION

COLOUR	CAPACITY	PACKAGING TYPE	COLLECTIVE PACKAGING	QUANTITY ON A PALLET
<input type="checkbox"/> beige	1,2 kg	bucket (PE)	1 pc.	378 pcs
	3,5 kg	bucket (PE)	1 pc.	144 pcs
	6 kg	bucket (PE)	1 pc.	80 pcs

'BOSMAN' LIQUID FILM

FOLIA...



INTENDED USE

The liquid film is intended for making sealing coats preventing moisture penetration in bathrooms, showers, laundry rooms, cellars that do not freeze, etc. It shows perfect adherence to substrates such as plasterboards, chipboards, cement and lime plasters, concrete substrates, ceramic hollow bricks, and suporex hollow bricks. After drying, it constitutes a substrate ready for covering with any finishing materials, such as tiles, terracotta, wooden and wood-like floors, and synthetic linings. Its high fluidity allows using it in areas that are difficult to access. Easy and quick to use. Light-blue colour. No special tools are required.



LOGISTIC INFORMATION

COLOUR	CAPACITY	PACKAGING TYPE	COLLECTIVE PACKAGING	QUANTITY ON A PALLET
<input type="checkbox"/> blue	1 kg	bucket (PE)	6 pc.	384 pcs
	3 kg	bucket (PE)	1 pc.	154 pcs
	6 kg	bucket (PE)	1 pc.	72 pcs

PRODUCT CATALOGUE



WATER VAPOUR PERMEABLE / MILDEWCIDAL / FUNGICIDAL AGENTS

WATER VAPOUR PERMEABLE ROOF MEMBRANE



MEMBRANA...



INTENDED USE

The three-layer roof membrane supplements the assortment of the hydroinsulating products. Intended for the so-called outer roof covering as a highly vapour permeable film. Its purpose is protecting thermal insulation and roof structure against moisture. Its structure allows draining moisture outwards towards the ventilation layer and prohibits moisture penetration inwards. All varieties of roof membranes consist of three basic layers. The middle layer has hydroinsulating properties, while the external layers made of PP unwoven fabric are used as a membrane protection and reinforcement. Together with increase in weight per square, the resistance of insulation to mechanical and physical factors increases as well. A roof membrane can be a less expensive and significantly more effective alternative to a fully boarded roof structure.

LOGISTIC INFORMATION

COLOUR	WIDTH m	LENGTH	WEIGHT PER M2	COLLECTIVE PACKAGING	QUANTITY ON A PALLET
green	1,5±0,5%	50±0,5%	175±10%	1 pc	66 pcs.
beige	1,5±0,5%	50±0,5%	135±10%	1 pc	66 pcs.
black	1,5±0,5%	50±0,5%	155±10%	1 pc	66 pcs.
grey	1,5±0,5%	50±0,5%	195±10%	1 pc	66 pcs.

MILDEWCIDAL AND FUNGICIDAL AGENTS

PROTECTION AGAINST GROWTH OF FUNGI AND MILDEW

DOES NOT DESTROY THE SURFACE

'BOSMAN' MILDEWCIDAL AGENT

IM-PLESN-100



INTENDED USE

A disinfectant and washing agent intended for use in the following areas: industry, household and institutional areas, including medical areas, except for clinical activity. It is perfectly suitable for smooth and porous surfaces (e.g. removal of black tarnish from walls, tiles, joints, wallpapers, and wood; it can be used in bathrooms around bath tubs and washbasins, and also on furniture, windows, doors, etc.) that do not come in contact with food. An agent with disinfectant properties, working against fungi, moulds, and bacteria. Its has bactericidal effect for 5 minutes and fungicidal effect for 15 minutes.



Permission to trade the product biocidal no. 2317/05

LOGISTIC INFORMATION

COLOUR	CAPACITY	PACKAGING TYPE	COLLECTIVE PACKAGING	QUANTITY ON A PALLET
<input type="checkbox"/> colourless	1 L	atomiser	8 pcs	640 pcs

FUNGI-KILL - FUNGICIDAL AND MILDEWCIDAL PREPARATION

IM-BO-AT



PROPERTIES

Liquid product.

INTENDED USE

'FUNGI-KILL' fungicidal preparation is used for removing fungi and mildew and protecting against their growth. Can be used on brick, plaster, concrete, roofing-tiles, eternit, and stone. It does not discolour or damage the surfaces covered.



Permission to trade the product biocidal no. 2317/05

LOGISTIC INFORMATION

COLOUR	CAPACITY	PACKAGING TYPE	COLLECTIVE PACKAGING	QUANTITY ON A PALLET
<input type="checkbox"/> colourless	1 L	bottle (PE)	15 pcs.	540 pcs
	5 L	canister (PE)	1 pc.	108 pcs



BOSMAN[®]professional series
for everybody

silicones | foams | impregnants | adhesives

MILDEWICIDAL / FUNGICIDAL AGENTS / THERMAL INSULATION MESH

'BOSMAN' SUPER CLEANSER
to remove tarnish, can be used on paving stones

CZ-SUPER-100

**PROPERTIES**

Liquid product.

INTENDED USE

The super cleanser is used for removing white calcareous blooms from paving bricks, clinker bricks, and other building materials. Intended for removal of masonry mortar soiling from flagstones, walls, glass, wood, brick, clinker brick, concrete and clay roofing tiles, eternit, and metal frames. removal of concrete residue from plastic moulds, and cleaning surfaces before their renovation and impregnation.

**LOGISTIC INFORMATION**

COLOUR	CAPACITY	PACKAGING TYPE	COLLECTIVE PACKAGING	QUANTITY ON A PALLET
<input type="checkbox"/> colourless	1 L	bottle (PE)	15 pcs	540 pcs

BOSMAN CITRUS CLEANER

CZ-CYTRUSOWY-500

**INTENDED USE**

Super fast product for removing self-adhesive labels, stickers as well as residues of glue, oil, stickers, grease, asphalt, tar and waterproof markers. Great for removing double-sided tapes, side moldings in cars, rim balancing weights, or registration stickers. Even the most problematic dirt is removed by our product, even though it does not contain any substances corrosive. This is due to the product's recipe, which contains strongly citrus oil solvents that not only effectively clean, but also they leave a pleasant, citrus scent. Can be used on metal, laminate, glass, ceramics, painted surfaces, wood and rubber. In front of everyone Before using the product, test it in an inconspicuous place. Do not use on plexiglass.

**LOGISTIC INFORMATION**

CAPACITY	PACKAGING TYPE	COLLECTIVE PACKAGING	QUANTITY ON A PALLET
500 ml	can	12 pcs	1008 pcs

THERMAL INSULATION MESH
5x5x145, 5x5x150, 5x5x160

SIATKA...

**PROPERTIES**Weave type: leno weave. Surface weight: 145g/m², 150g/m², 160g/m²**INTENDED USE**

The glass fibre mesh is intended for use as reinforcement of a plaster layer in wall thermal insulation systems as per the 'light method' of thermal insulation of

**LOGISTIC INFORMATION**

COLOUR	WIDTH m	LENGTH m	WEIGHT PER M2	COLLECTIVE PACKAGING	QUANTITY ON A PALLET
<input type="checkbox"/> blue	1 m+5%	50 m	160 g/m ²	1 pc.	33 rolls (1650 m)
<input type="checkbox"/> yellow	1 m+5%	50 m	145 g/m ²	1 pc.	33 rolls (1650 m)
<input type="checkbox"/> green	1 m+5%	50 m	145 g/m ²	1 pc.	33 rolls (1650 m)
<input type="checkbox"/> red	1 m+5%	50 m	145 g/m ²	1 pc.	33 rolls (1650 m)
<input type="checkbox"/> salomon	1 m+5%	50 m	150 g/m ²	1 pc.	33 rolls (1650 m)
<input type="checkbox"/> orange	1 m+5%	50 m	145 g/m ²	1 pc.	33 rolls (1650 m)

BOSMAN[®]professional series
for everybody

silicones | foams | impregnants | adhesives

**WITH US,
BUILDING
AND RENOVATING
IS EASIER**



TAPES AND ACCESSORIES

**SUPER ADHESIVE
WATERPROOF**

'BOSMAN' MASKING TAPE FOR PAINTING

TASKMASK B...



INTENDED USE

It is used as protection against paint stains. 'BOSMAN' PROFESSIONAL MASKING TAPE for painting is intended particularly for prolonged use on surfaces and for easy removal without substrate damage and without leaving any traces of adhesive. It is resistant to UV radiation.



LOGISTIC INFORMATION

COLOUR	WIDTH	PACKAGING TYPE	COLLECTIVE PACKAGING	QUANTITY ON A PALLET
■ blue				
	25mm/50m	roll	32 pcs	3600 pcs
	30mm/50m	roll	40 pcs	3200 pcs
	38mm/50m	roll	24 pcs	2400 pcs
	48mm/50m	roll	24 pcs	1968 pcs

'BOSMAN' MASKING TAPE FOR PAINTING

TAS-MAL...



INTENDED USE

It is used as protection against paint stains. 'BOSMAN' PROFESSIONAL MASKING TAPE for painting is intended particularly for prolonged use on surfaces and for easy removal without substrate damage and without leaving any traces of adhesive. It is resistant to UV radiation.



LOGISTIC INFORMATION

COLOUR	WIDTH	PACKAGING TYPE	COLLECTIVE PACKAGING	QUANTITY ON A PALLET
■ yellow				
	25mm/50m	roll	40 pcs	2160 pcs
	30mm/50m	roll	40 pcs	2160 pcs
	38mm/50m	roll	24 pcs	1440 pcs
	48mm/50m	roll	24 pcs	1440 pcs

'BOSMAN' MASKING TAPE FOR PAINTING



INTENDED USE

It is used as protection against paint stains. The professional 'BOSMAN' MASKING painter's tape has been prepared for long-lasting presence on surfaces and for easy removal without substrate damage and without leaving adhesive residue. It is resistant to UV radiation.



LOGISTIC INFORMATION

COLOUR	WIDTH	PACKAGING TYPE	COLLECTIVE PACKAGING	QUANTITY ON A PALLET
■ GOLD				
	30mm/50m	roll	60 pcs	
	38mm/50m	roll	32 pcs	
	48mm/50m	roll	24 pcs	



silicones | foams | impregnants | adhesives

'BOSMAN' BUILDING TAPE FOR PLASTERWORK



INTENDED USE

The PLASTERER'S BUILDING TAPE is a strongly adhesive protective plastic tape used in plastering during application of gypsum. The PLASTERER'S BUILDING TAPE has been created particularly for rough surfaces such as plaster, brick, etc., but it adheres to smooth surfaces as well. For indoor and outdoor application. It leaves no traces of adhesive after removal. Resistant to UV radiation. It can be also used for wood or natural stone. Manufactured with easy cutting and removal in mind, which makes it more convenient in use. The tape is resistant to mechanical damage. It protects against soiling during plastering and allows placing aesthetically pleasing even pieces on the plastered surface.

LOGISTIC INFORMATION

COLOUR	WIDTH	PACKAGING TYPE	COLLECTIVE PACKAGING	QUANTITY ON A PALLET
<input checked="" type="checkbox"/> orange				
	38mm/20m	roll	48 pcs	
	38mm/50m	roll	32 pcs	
	48mm/20m	roll	36 pcs	
	48mm/50m	roll	24 pcs	

'BOSMAN' BUILDING TAPE FOR REPAIRS

TAS DUCTST..



INTENDED USE

For DIY enthusiasts and for professional use. It is characterized by perfect adherence to different surfaces. Waterproof. Its main advantages are: diversity of possible applications, e.g. fastening insulating materials, joining different materials, sealing cardboard boxes and bags, repairing damaged pipes and hoses, quick protection and insulation of different surfaces, designating transportation routes, surface marking, and many others. 'Bosman ST 101' BUILDING REPAIR TAPE features improved reinforcement (it has better adherence and higher tensile and thermal strength).

LOGISTIC INFORMATION

COLOUR	WIDTH	PACKAGING TYPE	COLLECTIVE PACKAGING	QUANTITY ON A PALLET
<input checked="" type="checkbox"/> silver				
	48mm/10	roll	36 pcs	
	48mm/25	roll	36 pcs	

ROOFWORK TAPE ALUMINIUM / GREY / COPPER

DAT-TA-...



INTENDED USE

Aluminium and grey roofwork tape, intended for roofing works.

LOGISTIC INFORMATION

COLOUR	WIDTH	PACKAGING TYPE	COLLECTIVE PACKAGING	QUANTITY ON A PALLET
<input type="checkbox"/> grey				
<input type="checkbox"/> aluminium				
<input checked="" type="checkbox"/> copper				
	7,5 cm	roll	4 pcs	
	10 cm	roll	3 pcs	
	15 cm	roll	2 pcs	
	30 cm	roll		

PP-25115 TWO-SIDED TAPE



INTENDED USE

Thickness of 75 µm. Cost-efficient tape. Works much better than comparable tapes in its class.

LOGISTIC INFORMATION

COLOUR	WIDTH	PACKAGING TYPE	COLLECTIVE PACKAGING	QUANTITY ON A PALLET
<input checked="" type="checkbox"/> yellow	48 x 10y	roll	36 pcs	





PP-22107 REINFORCED TWO-SIDED TAPE



INTENDED USE

Thickness of 140 µm. Cost-effective tape with strong adhesion.

LOGISTIC INFORMATION

COLOUR	WIDTH	PACKAGING TYPE	COLLECTIVE PACKAGING	QUANTITY ON A PALLET
<input checked="" type="checkbox"/> yellow	48 x 10y	roll	36 pcs	

TWO-SIDED ASSEMBLY FOAM TAPE

TASM-PIAN



INTENDED USE

White moisture-resistant tape on the basis of foam carrier with excellent parameters. High initial adhesion and shear strength.

LOGISTIC INFORMATION

COLOUR	WIDTH	PACKAGING TYPE	COLLECTIVE PACKAGING	QUANTITY ON A PALLET
<input checked="" type="checkbox"/> silver	19/1,5 m	roll	384 pcs	

SEALING TAPE ON A FIBRE



INTENDED USE

For flexible and watertight securing of corners, edges, expansion joints, substrate cracks, system pipe passages when insulating terraces, balconies, laundry rooms, kitchens, and bathrooms against water or moisture, and also securing water reservoirs using a high pressure insulation against water. Its main task is securing installation gaps against penetration by water and moisture.

LOGISTIC INFORMATION

COLOUR	WIDTH	PACKAGING TYPE	COLLECTIVE PACKAGING	QUANTITY ON A PALLET
<input checked="" type="checkbox"/> blue	10m/120mm	roll		

'OD A DO Z FLEX' HYDROINSULATING SEALING TAPE

TASM-FLEX...



INTENDED USE

'Od A do Z Flex' sealing tape is intended for permanent and flexible sealing of joints in the hydroinsulation / expansion joint areas at risk of formation of scratches or cracks, e.g. sealing of the joint between the wall and floor in humid rooms. For indoor and outdoor use. The tape is intended for submersion in a hydroinsulating mortar.

LOGISTIC INFORMATION

COLOUR	WIDTH	GASKET WIDTH	LENGTH	PACKAGING TYPE	COLLECTIVE PACKAGING	QUANTITY ON A PALLET
<input checked="" type="checkbox"/> white and blue						
	120 mm	70 mm	10 mb	roll	1 pc.	500 pcs
	120 mm	70 mm	50 mb	roll	1 pc.	500 pcs

BUTYL TAPE B1



WŁAŚCIWOŚCI

Taśma to włóknina pokryta butylem na całej szerokości. Stanowi doskonałe rozwiązanie jako uszczelnienie u dołu okien lub dodatkowa izolacja narożników. Dzięki butylowi zwiększa się zdecydowanie możliwość kształtowania połączenia z zachowaniem bardzo dobrej szczelności i łatwości wykonania. Termoplastyczna taśma samoprzylepna przeznaczona do przeciwwodnego i przeciwwilgociowego zabezpieczenia połączeń nie przenoszących obciążeń mechanicznych.



LOGISTIC INFORMATION

COLOUR	WIDTH	LENGTH	PACKAGING TYPE	COLLECTIVE PACKAGING	QUANTITY ON A PALLET
<input type="checkbox"/> light gray	100 mm	25 mb	roll	1 pc.	90 pcs

WARM
GOOD INSTALLATION

“STANDARD 2020” 3-LAYER WARM/TIGHT INSTALLATION SYSTEM

ENERGY SAVING
PROTECTS AGAINST MOISTURE
WATERPROOF

WARM WINDOW INSTALLATION - WHAT IS IT?

Windows are usually anchored to the wall, and the space between the wall and the window frame is filled with polyurethane foam. The assembly foam provides good thermal and acoustic insulation, is resistant to impact of mildew and fungi, does not age, and it contributes to easiness and low cost of installation of windows. Nowadays it is recommended to perform layered installation of thermal insulation made of PUR foam, which is additionally secured on the inside with a water-vapour-tight tape/film, and on the outside with waterproof water-vapour-permeable tape. Thus, we have three layers - layer insulated against water vapours, intended for preventing the moisture from inside the home from penetrating the foam, thermal insulation layer, and water-vapour-tight layer, intended for protecting foam against precipitation and, at the same time, enabling water vapour diffusion. Layered installation is supposed to limit the thermal bridges and, as a result, reduce the cost of heating, improve the room microclimate, and prevent appearance of mildew growth around windows.





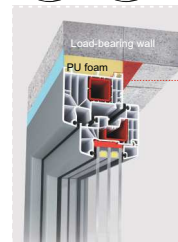
'INSIDE' ASYMMETRICAL INNER TAPE

TAS-CM-WE-10



INTENDED USE

'INSIDE' ASYMMETRICAL INNER TAPE - with glue strip for installation on window frame and a band of butyl for bonding to the wall. The film is intended for insulating the joints inside the building. The film is coated on both sides with a special non-woven fabric that ensures optimal adhesion of glue and facilitates plastering and final processing. Indoor water-vapour-tight films do not allow penetration of the joint by condensation moisture and form a barrier for the humidity that could penetrate the room, leading to growth of mildew and fungi. The foam recommended for use in this system is the 'Bosman Lux 65' SUPER EFFICIENT foam.



'INSIDE' ASYMMETRICAL INNER TAPE

LOGISTIC INFORMATION

COLOUR	WIDTH	AMOUNT OF TAPE PER ROLL	APPLICATION TEMPERATURE	STORAGE TEMPERATURE	PACKAGING TYPE	COLLECTIVE PACKAGING	QUANTITY ON A PALLET
■ red	70 mm	30 m	od +5°C do +35°C	od +1°C do +25°C	roll	4 pcs	480 pcs
	100 mm	30 m	od +5°C do +35°C	od +1°C do +25°C	roll	3 pcs	360 pcs

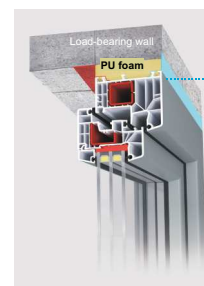
'OUTSIDE' ASYMMETRICAL OUTER TAPE

TAS-CM-ZE-10



INTENDED USE

'OUTSIDE' ASYMMETRICAL OUTER TAPE - with glue strip for installation on window frame and a band of butyl for bonding to the wall. It is dedicated for insulating joints on the outer side and is made of highly water-vapour-permeable membrane. Thanks to a coated non-woven fabric, it ensures optimal adhesion of glue and facilitates plastering and final processing. Outer films are intended for securing the window-wall joint against penetration by precipitation water, and enable removing the moisture from the joint to the outside of the building. Additionally, they constitute an excellent wind barrier, improving the quality of the joint made. It is necessary to remember that outer film have to be processed within not more than 3 months from the installation date. The foam recommended for use in this system is the 'Bosman Lux 65' SUPER EFFICIENT foam.

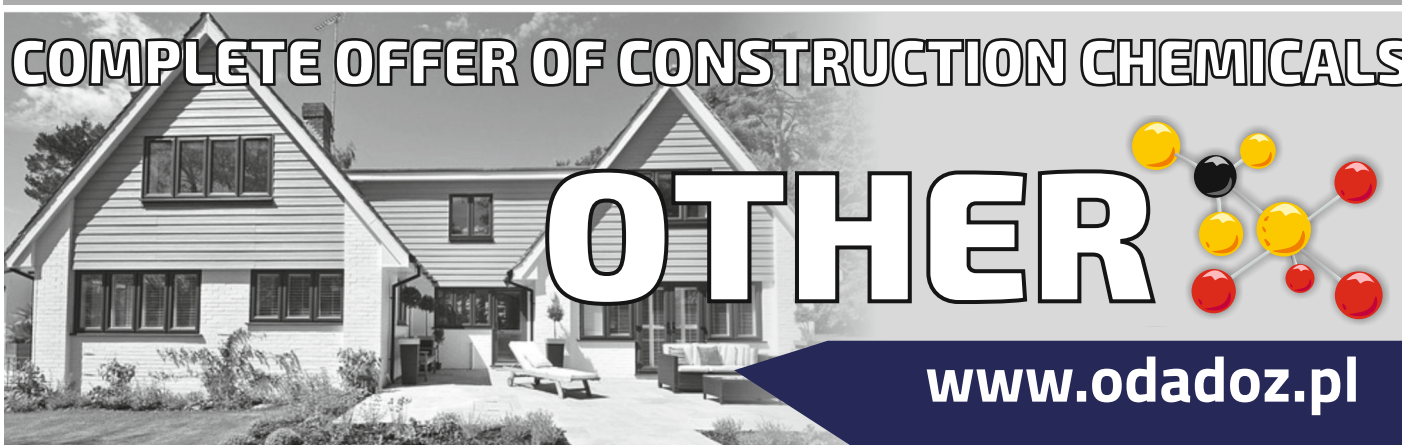


'OUTSIDE' ASYMMETRICAL OUTER TAPE

LOGISTIC INFORMATION

COLOUR	WIDTH	AMOUNT OF TAPE PER ROLL	APPLICATION TEMPERATURE	STORAGE TEMPERATURE	PACKAGING TYPE	COLLECTIVE PACKAGING	QUANTITY ON A PALLET
■ black	70 mm	30 m	od +5°C do +35°C	od +1°C do +25°C	roll	4 pcs	480 pcs
	100 mm	30 m	od +5°C do +35°C	od +1°C do +25°C	roll	3 pcs	360 pcs

COMPLETE OFFER OF CONSTRUCTION CHEMICALS



OTHER

www.odadoz.pl

SILICONE AND FAT REMOVER

CZ-ZMY-SIL-05



PROPERTIES

Volatile organic solvent that evaporates quickly and completely. Does not dissolve most coatings and plastics. Does not damage surfaces made of metal, wood, or leather. Reacts with certain protective coatings and impregnants based on silicones.

INTENDED USE

A high quality product intended for removal of fats, silicones, oils, waxes, greases and other resin, asphalt, and tar contaminations. It is efficient and highly effective in cleaning and degreasing of steel, aluminium, galvanised steel, and stainless steel surfaces, and also lacquered surfaces.



LOGISTIC INFORMATION

COLOUR	CAPACITY	PACKAGING TYPE	COLLECTIVE PACKAGING	QUANTITY ON A PALLET
□ Transparent	0,5 L	bottle (PE)	20 pcs	1080 pcs



silicones | foams | impregnants | adhesives

INCHEMMIX PIGMENT

KOL-MI....-80



PROPERTIES

Liquid product.

INTENDED USE

'Inchem Mix' pigment is used for providing paint with a colour.

<input type="checkbox"/> yellow pigment	<input type="checkbox"/> salmon pink	<input type="checkbox"/> lavender	<input type="checkbox"/> red
<input type="checkbox"/> lemon	<input type="checkbox"/> red pigment	<input type="checkbox"/> blue	<input type="checkbox"/> green
<input type="checkbox"/> brown	<input type="checkbox"/> sunny yellow	<input type="checkbox"/> peach	<input type="checkbox"/> caramel
<input type="checkbox"/> ochre	<input type="checkbox"/> sand	<input type="checkbox"/> coral	<input type="checkbox"/> sapphire
<input type="checkbox"/> pistachio green	<input type="checkbox"/> olive	<input type="checkbox"/> green pigment	<input type="checkbox"/> black
<input type="checkbox"/> brown	<input type="checkbox"/> beige	<input type="checkbox"/> turquoise	<input type="checkbox"/> orange

LOGISTIC INFORMATION

COLOUR	CAPACITY	PACKAGING TYPE	COLLECTIVE PACKAGING	QUANTITY ON A PALLET
	80 ml	bottle (PE)	25 pcs	3500 pcs

PAINTER'S SOAP

RZ-MM-050



PROPERTIES

Liquid product.

INTENDED USE

Painter's soap is used for washing substrates before painting.

LOGISTIC INFORMATION

COLOUR	CAPACITY	PACKAGING TYPE	COLLECTIVE PACKAGING	QUANTITY ON A PALLET
<input type="checkbox"/> grey	500 g	bucket (PE)	16 pcs	480 pcs

'LÓD STOP'

'LÓD STOP'



PROPERTIES

'LÓD STOP' is an exceptionally good and super fast agent for removal of frozen snow and ice; it does not destroy surfaces cleaned (it is safe for concrete, natural stone, granite brick, asphalt or various type of precast concrete units). It is effective down to -40°C. It leaves no white tarnish on footwear or any surfaces. Ice and snow have no chance to accumulate - the surfaces treated with the product are free of icing within the subsequent 60 hours. Melts snow mud as well. The product does not cause jams in gutters, effluents, or sewage systems. It contains no salts or another dangerous active substances. The product is harmless for plants and animals, and is environmentally safe. It is biodegradable and water-soluble. The agent is neutral to most plastics. If the product is to be applied on a damaged surface or a pavement protected with special protective coatings, it is recommended to carry out a test on a non-exposed area. It is non-corrosive to metals and does not destroy bodies of cars.

INTENDED USE

ICE STOP is used for quick and permanent removal of ice and frozen snow from roads, sidewalks, driveways, stairs, or open terraces. It is safe for surfaces cleaned. It is also recommended as an efficient agent for melting ice jams in gutters and for roof deicing.

LOGISTIC INFORMATION

COLOUR	CAPACITY	PACKAGING TYPE	COLLECTIVE PACKAGING	QUANTITY ON A PALLET
<input type="checkbox"/> white	5 kg	bucket (PE)	1 pc.	108 pcs

SOOT REMOVER

SOOT REMOVER



INTENDED USE

An environmentally friendly preparation that facilitates boiler and chimney cleaning. It allows removal of hard sludge banks and slags, soot soiling in chimney ducts, and corrosion of metal elements of a boiler and chimney. Using the soot remover improves the heat exchange and, consequently, decreases fuel consumption and emission of dust and gases. Improves boiler efficiency, eliminating frequent stoppages caused by soiling. The preparation is suitable in case of use of fuels such as coal, lignite, and biomass and another environmentally friendly fuels.

LOGISTIC INFORMATION

COLOUR	CAPACITY	PACKAGING TYPE	COLLECTIVE PACKAGING	QUANTITY ON A PALLET
<input type="checkbox"/> light green	40 g	sachet	100 pcs	10600 pcs





OTHER

'BOSMAN' CAUSTIC SODA

RZ-SODA-025



INTENDED USE

Caustic soda, also known as sodium hydroxide, is used for unblocking sewer pipes. It dissolves paper, hair, fats, and household waste.

LOGISTIC INFORMATION

COLOUR	CAPACITY	PACKAGING TYPE	COLLECTIVE PACKAGING	QUANTITY ON A PALLET
<input type="checkbox"/> white	0,2 kg	bottle (PE)	15 pcs	1300 pcs

'BOSMAN FOSKOR' RUST REMOVER

RZ-FOSKOR-025



PROPERTIES

Liquid product.

INTENDED USE

'BOSMAN Foskor' rust remover is a substance used for degreasing and derusting steel and cast iron.

LOGISTIC INFORMATION

COLOUR	CAPACITY	PACKAGING TYPE	COLLECTIVE PACKAGING	QUANTITY ON A PALLET
<input type="checkbox"/> white	0,25 kg	bottle (PE)	10 pcs	

WINDSCREEN WIPER FLUID

PLYN-SPR...



PROPERTIES

A windscreen washer fluid for use in summer and winter.

INTENDED USE

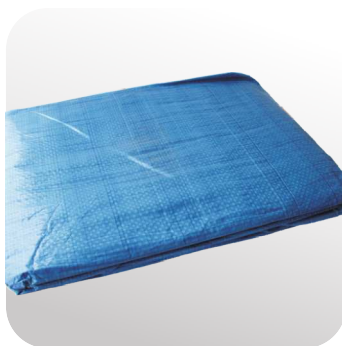
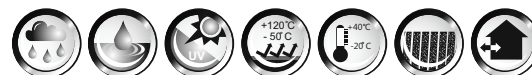
The windscreen and headlight washer liquid for summer and winter leaves no light reflections, and removes road dirt and deposits efficiently with no streaks or runs. The winter liquid can be used in temperature down to -20°C.

LOGISTIC INFORMATION

CAPACITY	PACKAGING TYPE	COLLECTIVE PACKAGING	QUANTITY ON A PALLET
4 L	canister (PE)	1 pc.	108 pcs

TARPAULIN COVERINGS

PLANDEKA...



INTENDED USE

Used for protecting objects indoors and outdoors. The tarpaulin edges are finished with a reinforced double overlap with a PP string. To facilitate installation, aluminium eyelets are mounted along the tarpaulin cover perimeter.

LOGISTIC INFORMATION

COLOUR	SIZE	PACKAGING TYPE	COLLECTIVE PACKAGING	QUANTITY ON A PALLET
<input checked="" type="checkbox"/> blue				
	PE tarpaulin - 3x4	package	10 pcs	
	PE tarpaulin - 3x5	package	8 pcs	
	PE tarpaulin - 4x6	package	5 pcs	
	PE tarpaulin - 5x8	package	6 pcs	
	PE tarpaulin - 6x8	package	5 pcs	
	PE tarpaulin - 6x10	package	2 pcs	
	PE tarpaulin - 8x12	package	3 pcs	
	PE tarpaulin - 10x12	package	1 pcs	
	PE tarpaulin - 10x15	package	1 pcs	



PAINT REMOVING AGENT, FOR REMOVAL OF PAINT AND OLD LACQUER COATINGS

CZY-FARB-050



PROPERTIES

Agent for removing paints from metal, concrete, glass, ceramic, and wooden surfaces.

INTENDED USE

A volatile mix of organic solvents, condensed and stabilised with evaporation retarding additives. Optimal viscosity is achieved at product temperature of 20°C.

LOGISTIC INFORMATION

CAPACITY	PACKAGING TYPE	COLLECTIVE PACKAGING	QUANTITY ON A PALLET
0,5 L	can	6 pcs	1152 pcs

GARBAGE AND RUBBISH BAGS



INTENDED USE

Garbage bags with a capacity of 240 liters - 10 pieces on a roll.

LOGISTIC INFORMATION

COLOUR	WIDTH	PACKAGING TYPE	COLLECTIVE PACKAGING	QUANTITY ON A PALLET
black	90x140	roll	10 pcs	

STOVE MORTAR

ZAPRAWA ZD-50



PROPERTIES

The agent is resistance to high temperatures up to 110°C. It is characterised by very good compression strength, providing content of texture of the compound laid, ensuring high resistance to abrasion. It is characterised by excellent workability and easy application.

INTENDED USE

A one-component fireproof bricklaying mortar, intended for building chimneys, fireplaces, furnaces, barbecues, bread baking ovens, and smokehouses, and also for counting chimney bricks, fireclay, and other materials exposed to high temperatures.

LOGISTIC INFORMATION

CAPACITY	PACKAGING TYPE	COLLECTIVE PACKAGING	QUANTITY ON A PALLET
5 kg	bucket (PE)	1 pc.	72 pcs

FLAT PAINT BRUSH

PE-ANGIEL...



INTENDED USE

A flat paint brush for application of building agents.

LOGISTIC INFORMATION

COLOUR	SIZE	PACKAGING TYPE	COLLECTIVE PACKAGING	QUANTITY ON A PALLET
	25, 36, 50	cardboard box	24 pcs	
	63, 76, 90, 102	cardboard box	12 pcs	





ROUND PAINT BRUSH

PE-OKRA-...



INTENDED USE
A round paint brush for application of building agents.

LOGISTIC INFORMATION

COLOUR	SIZE	PACKAGING TYPE	COLLECTIVE PACKAGING	QUANTITY ON A PALLET
	20, 25, 30, 35, 40, 45, 50, 55	cardboard box	24 pcs	
	60, 70	cardboard box	12 pcs	

THIN FLAT PAINT BRUSH

PE-POLANG-...



INTENDED USE
A thin flat paint brush for application of building agents.

LOGISTIC INFORMATION

COLOUR	SIZE	PACKAGING TYPE	COLLECTIVE PACKAGING	QUANTITY ON A PALLET
	25, 36, 50	cardboard box	24 pcs	
	63	cardboard box	12 pcs	

MINI "BENCH PAINTER" PAINT BRUSH

PE-MINILA-...



INTENDED USE
Mini "bench painter" brush for application of building agents.

LOGISTIC INFORMATION

COLOUR	SIZE	PACKAGING TYPE	COLLECTIVE PACKAGING	QUANTITY ON A PALLET
	15, 20, 25, 36, 50,	cardboard box	12 pcs	

RADIATOR PAINT BRUSH

PE-KALOR-...



INTENDED USE
A radiator paint brush for application of building agents.

LOGISTIC INFORMATION

COLOUR	SIZE	PACKAGING TYPE	COLLECTIVE PACKAGING	QUANTITY ON A PALLET
	25, 36, 50	cardboard box	24 pcs	
	63	cardboard box	12 pcs	



BOSMAN[®]professional series
for everybody

silicones | foams | impregnants | adhesives

PAINT BRUSHES / TOOLS

WOODEN "BENCH PAINTER" PAINT BRUSH

PE-LAWDRE-...

**INTENDED USE**

A wooden "bench painter" paint brush for application of building agents.

LOGISTIC INFORMATION

COLOUR	SIZE	PACKAGING TYPE	COLLECTIVE PACKAGING	QUANTITY ON A PALLET
	25, 36, 50	cardboard box	12 pcs	

TAR BRUSH

PE-SMOLOW-...

**INTENDED USE**

A tar brush for application of building agents.

LOGISTIC INFORMATION

COLOUR	SIZE	PACKAGING TYPE	COLLECTIVE PACKAGING	QUANTITY ON A PALLET
		cardboard box	24 pcs	

RUBBER PALM GLOVES

REK-WAMPIRKI

**INTENDED USE**

Rubber palm gloves - protective clothing

LOGISTIC INFORMATION

COLOUR	SIZE	PACKAGING TYPE	COLLECTIVE PACKAGING	QUANTITY ON A PALLET
			10 pcs	

BOSMAN[®]professional series
for everybody

silicones | foams | impregnants | adhesives

**WITH US,
BUILDING
AND RENOVATING
IS EASIER**



XXX 100 STAND, POLYMER / 'BOSMAN' FITTER'S STARTING

EXPOSITION DISPLAYS XXX 100 POLYMER, WHITE



XXX 100 POLYMER
WHITE
x 9 pcs

XXX 100 EXPOSITION DISPLAY, POLYMER, TRANSPARENT



XXX 100 POLYMER
TRANSPARENT
x 9 pcs



'BOSMAN' FITTER'S STARTING KIT



THE KIT CONSISTS OF:

- 8 x 'BOSMAN' ALL-SEASON GUN FOAM, GOLD
- 4 x BOSMAN LUX 65L FOAM, SUMMER/WINTER
- 4 x 'BOSMAN' GUN FOAM, SUMMER/WINTER
- 1 x PENETRATOR
- 1 x 'BOSMAN' ALL-PURPOSE CLEANER
- 1 x BOSMAN PROFESSIONAL FOAM GUN



BOSMAN[®]professional series
for everybody

silicones | foams | impregnants | adhesives

**BUILDING AND REPAIRING IS EASIER WITH OUR****KITS****BOSMAN**[®]professional series
for everybody

silicones | foams | impregnants | adhesives

**WITH US,
BUILDING
AND RENOVATING
IS EASIER****CHEAPER IN THE KITS****1 x RUBBER SEALANT
FOR ROOFWORK****PROPERTIES**

Permanently plastic and flexible; for dry and wet substrates; can be painted after it cures completely (it is not corrosive for metals). Very good adherence to many materials such as: glass, tiles, ceramics, wood, stone, concrete, steel, aluminium, lead, zinc, etc. It does not contain silicone. Intended for outdoor and indoor applications at any climate conditions. Highly resistant to impact of UV and fungi.

INTENDED USE

Rubber roofwork sealant is used for sealing roofing (sheet steel tiles, roofing tiles), metal elements (e.g. gutters, downpipes, flashings, profiled metal sheets, roof window flanges, balustrades, and masts), emergency repairs, removing water leaks, and filling cracks in concrete and stone. For plastics, carry out a test for tolerance of solvents contained in the product.

ZES-IMPRES-DAK

KIT 1

ZES-IMPRES-DAK

**2 x 'BOSMAN' IMPREGNANT FOR
BUILDING AND STRUCTURAL TIMBER**

CONCENTRATE 1:9 / protection class: I and II/

**PROPERTIES**

Liquid product.

INTENDED USE

'Bosman' - Impregnant for building and structural timber - is a wood preserving agent (1st & 2nd class of protection against biological corrosion) for indoor use; it protects rafter framing, wooden structures, etc. against household fungi and mildew.





KITS



1 x INDOOR ACRYL



PROPERTIES

Permanently plastic and flexible after it cures completely; can be painted with paint and lacquer coats; odourless and chemically neutral. Resistant to cracking and contraction scratch formation. Very good adherence to porous substrates (e.g. concrete, plaster, gypsum, building ceramics, stone, wood). Easy to apply and form.

INTENDED USE

Indoor acryl is intended for filling cracks, scratches, gaps, and cavities in masonry, walls, and ceilings, sealing finishings (e.g. around window sills and sashes, doorposts, handrails, and stairs), pointing of corner joints, wallboards and floor slabs when furnishing interiors made of plasterboards. Do not use in areas exposed to constant impact of water (use 'Bosman' Outdoor Acryl instead).

KIT 2

ZES-GRUNT-AKB

2 x 'BOSMAN' ACRYLIC PRIMER 1:1



PROPERTIES

Penetrates brittle and weak substrates quickly. Protects against moisture and reduces absorbency. Improves adherence of paints, plasters and fillers. Creates an impermeable coat.

INTENDED USE

The acrylic primer emulsion is used for priming substrates made of concrete, cement, gypsum, etc. It penetrates the primed substrate deeply, strengthening it and protecting it against moisture. Applying the acrylic primer emulsion under paints, adhesives and self-levelling compounds allows reduction of consumption of these materials. The emulsion makes the primed substrate non-absorbent. It is perfect for floor heating systems. The preparation can be applied indoors and outdoors.



2 x INDOOR ACRYL



PROPERTIES

Permanently plastic and flexible after it cures completely; can be painted with paint and lacquer coats; odourless and chemically neutral. Resistant to cracking and contraction scratch formation. Very good adherence to porous substrates (e.g. concrete, plaster, gypsum, building ceramics, stone, wood). Easy to apply and form.

INTENDED USE

Indoor acryl is intended for filling cracks, scratches, gaps, and cavities in masonry, walls, and ceilings, sealing finishings (e.g. around window sills and sashes, doorposts, handrails, and stairs), pointing of corner joints, wallboards and floor slabs when furnishing interiors made of plasterboards. Do not use in areas exposed to constant impact of water (use 'Bosman' Outdoor Acryl instead).

KIT 3

ZES-GRSZC-AKB

2 x ALL-PURPOSE SUPER-BONDING PRIMER, READY TO USE



PROPERTIES

'BOSMAN' BONDING PRIMER is bonding and insulating base primer for indoor and outdoor use. It is used for improving adherence and eliminating absorbability of medium-absorbent substrates such as: concrete, cement, gypsum, plasterboard, cement plaster, and cement and lime substrates. Bonding primer can be applied under plasters, screeds, wallpapers, self-levelling flooring, ceramic tiles, acrylic and mineral plasters, fillers, and adhesives. In renovations, it is applied as the intermediate layer onto phthalate coatings that later have to be levelled or painted with water-based paints. It effectively improves the adherence of subsequent layer (compound or paint).



Super adhesive



Constitutes an insulating layer



Balances the substrate absorbency





SILICONES, GAS CARTRIDGES 6 pcs



KIT 4

ZES-SIL-GAZ



THE KIT INCLUDES 6 GAS CARTRIDGES:

- 2 x ALL-PURPOSE SILICONE, GAS CARTRIDGE
- 2 x HIGH-TEMPERATURE SILICONE, GAS CARTRIDGE
- 2 x SANITARY SILICONE, GAS CARTRIDGE

THINNERS - METAL PACKAGING 8 pcs



KIT 5

ZES-ROZ-MET



THE KIT INCLUDES 8 THINNERS:

- 2 x UNIVERSAL THINNER
- 1 x PHTHALATE THINNER
- 1 x NITRO THINNER
- 1 x EXTRACTION THINNER
- 1 x ACETONE THINNER
- 1 x CHLORINATED RUBBER THINNER
- 1 x PURE EXTRACTION NAPHTHA





'BOSMAN' WORKING TROUSERS AND JUMPER



'BOSMAN' WORKING POLAR JUMPER



'BOSMAN' POLO SHIRT



'BOSMAN' TOWEL



BOSMAN[®]

professional series
for everybody

silicones | foams | impregnants | adhesives



NOTES

Lined area for notes with horizontal dotted lines.

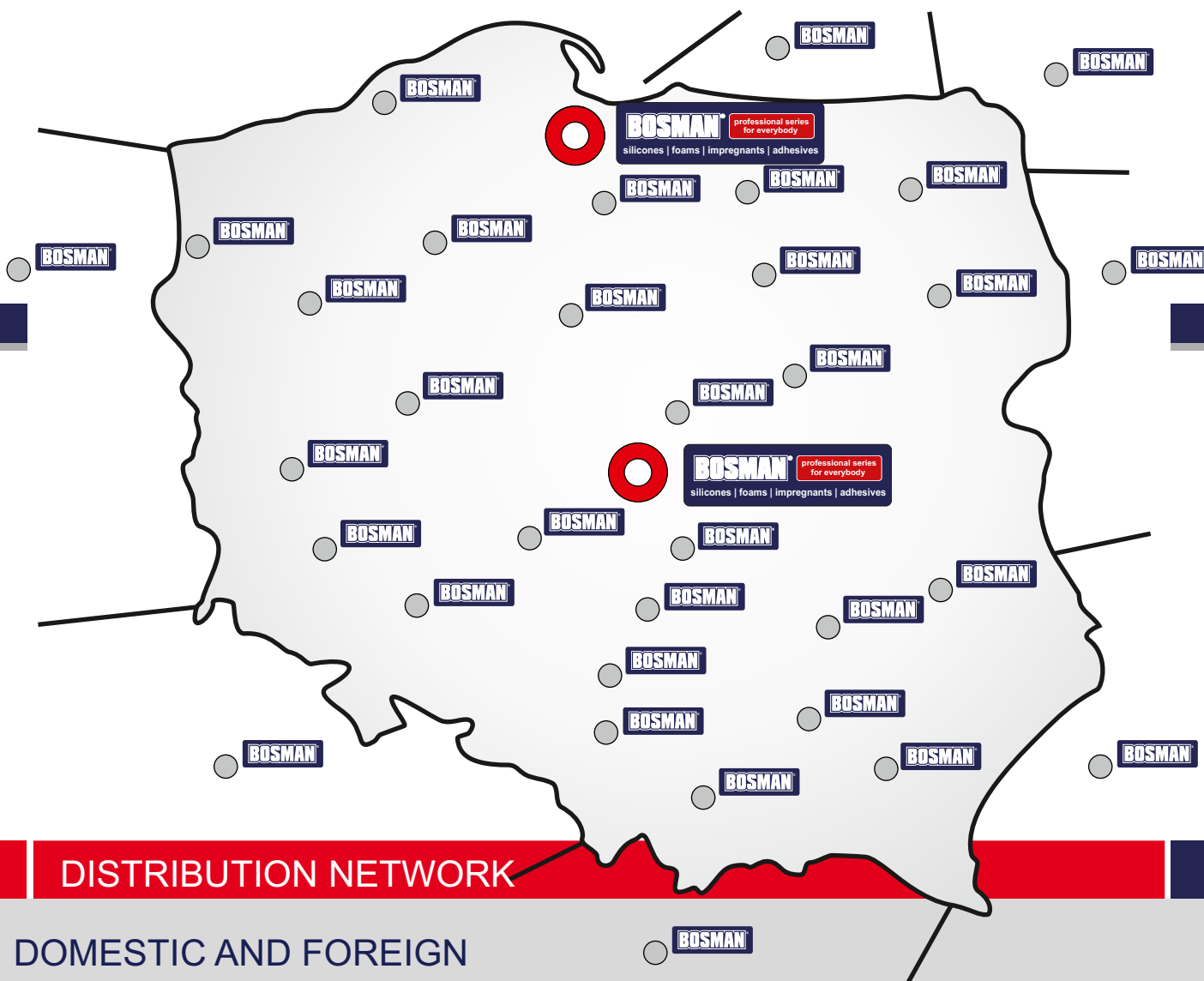




NOTES

A large area of horizontal dotted lines for taking notes.





HEAD OFFICE IN ŁÓDŹ

Od A do Z S.A.

91-342 Łódź, ul. Helska 47/61

tel./fax: +48 42 650 08 10, +48 42 651 63 75

NIP (tax identification number): 726-22-03-044

REGON (Polish National Business Register number): 473199765

ORDERS: zamowienia@odadoz.pl

BRANCH OFFICE IN GDAŃSK

Od A do Z S.A.

83-032 Pszczółki, ul. Pomorska 42

tel./fax: +48 58 306 69 56, tel. +48 608 521 020

e-mail: azgdansk@interia.pl



www.odadoz.pl